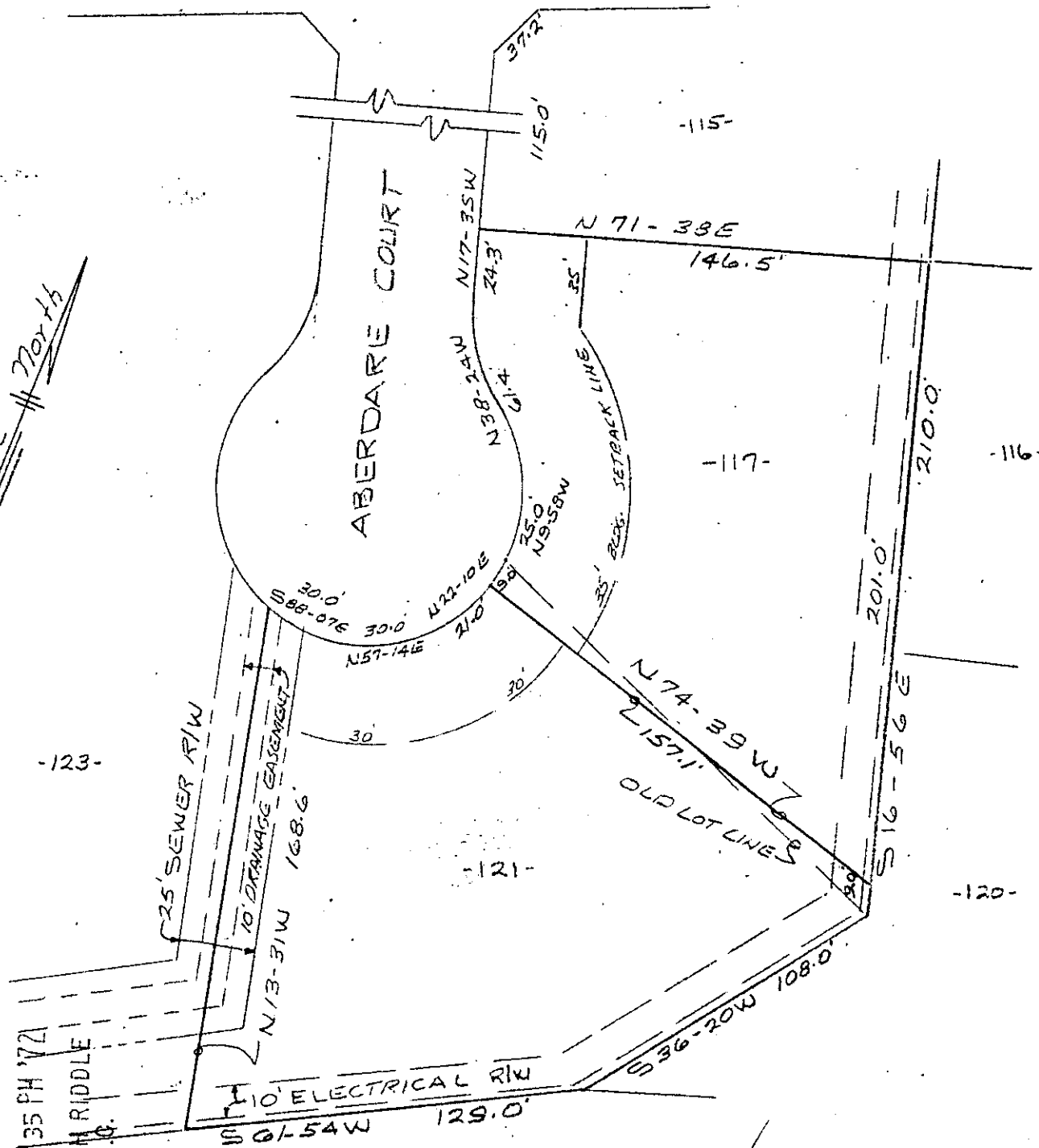


REF. - PLAT OF KINGSGATE FILED IN PLAT BK. WWW PG. 44 & 45.

DONINGTON DRIVE

ABERDARE COURT

Magnetic North



FILED
 GREENVILLE CO. S. C.
 OCT 9 2 35 PM '72
 ELIZABETH RIDDLE
 R.M.C.

REVISION LOT NO. 117 & 121
 KINGSGATE

NEAR GREENVILLE, S.C.
 SCALE 1"=50' APR. 19, 1972
 Platbook 4-U, Page 145

OCT 9 1972 10708

PIEDMONT ENGINEERS and ARCHITECTS
 GREENVILLE, S. C.



RECORDING FEE
 PAID \$ 100