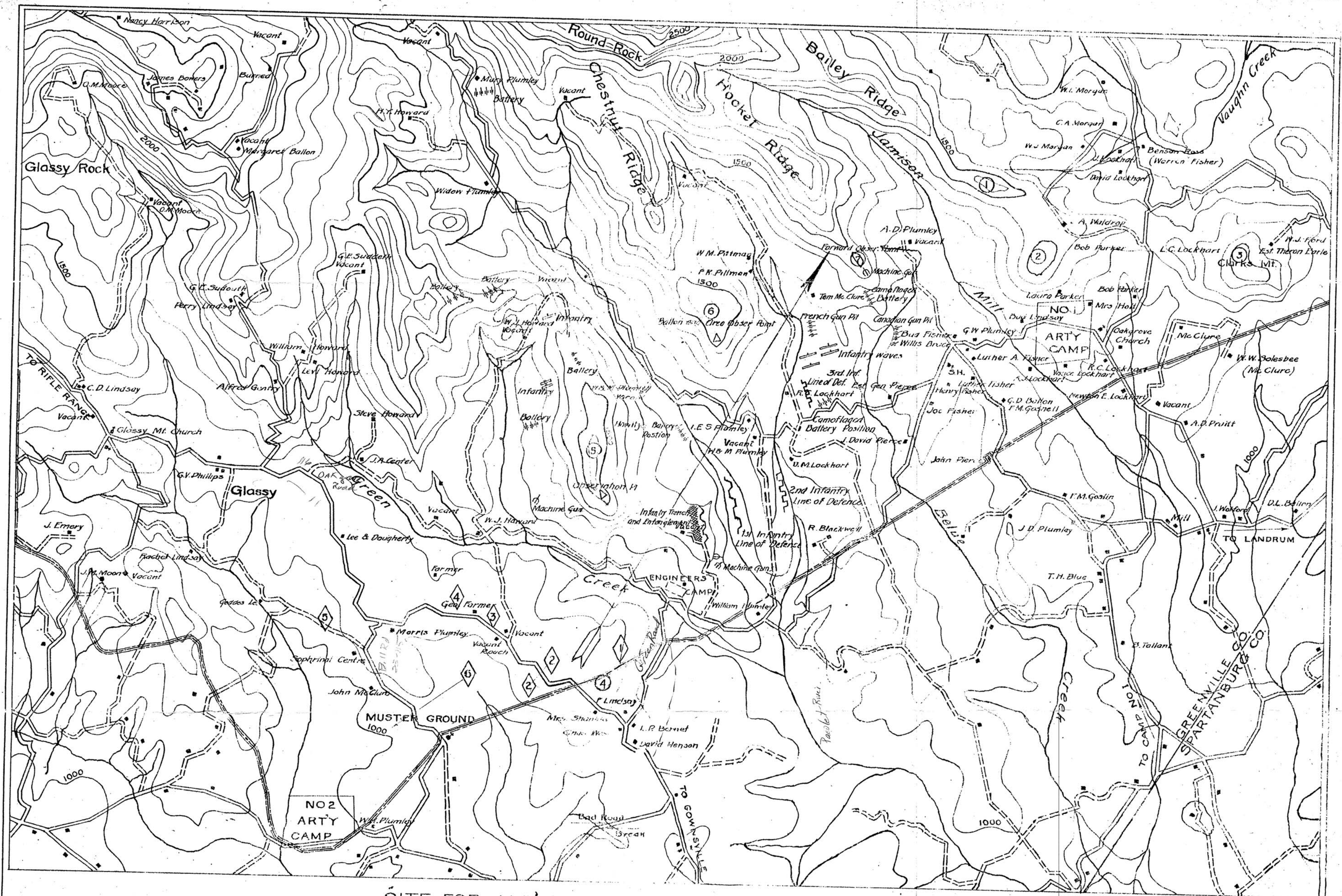


114-117

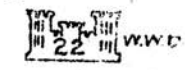


SITE FOR ARTY RANGE - 27th DIVISION, U.S.A.
 GREENVILLE & SPARTANBURG COUNTIES, S.C.

Scale 3" = 1 Mile

BOUNDARIES OF RESERVATION

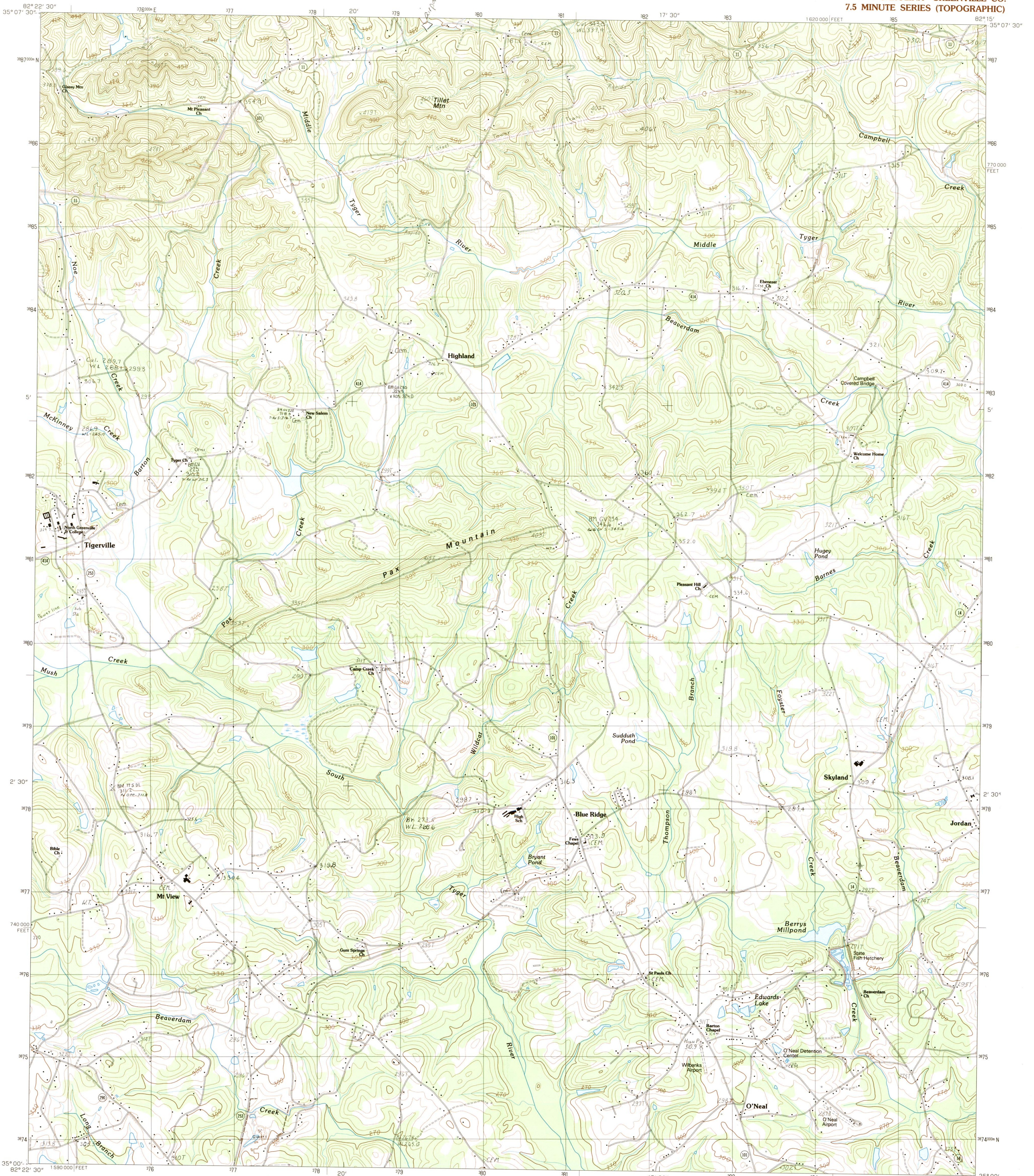
- ② BATTERY FIRING POSITIONS
- ② OBSERVING POSTS
- ALL OTHER CHARACTERS SHOWN REPRESENT TARGETS.



Handwritten mark resembling 'X2'.

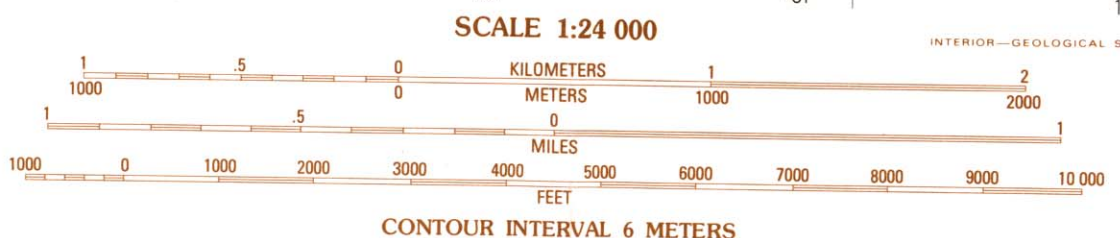
UNITED STATES
DEPARTMENT OF THE INTERIOR
GEOLOGICAL SURVEY

TIGERVILLE QUADRANGLE
SOUTH CAROLINA—GREENVILLE CO.
7.5 MINUTE SERIES (TOPOGRAPHIC)

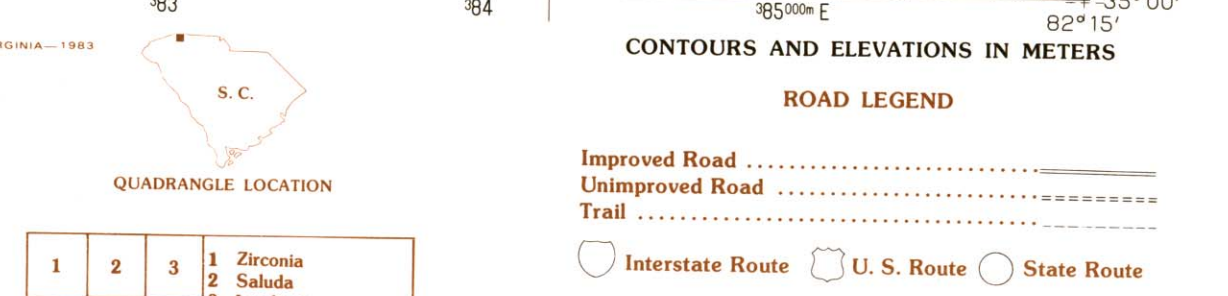


PRODUCED BY THE UNITED STATES GEOLOGICAL SURVEY CONTROL BY U.S.G.S., NOS/NOAA, AND SOUTH CAROLINA GEODETIC SURVEY COMPILED FROM AERIAL PHOTOGRAPHS TAKEN 1976 FIELD CHECKED 1977 MAP EDITED 1983 PROJECTION LAMBERT CONFORMAL CONIC GRID 1000-METER UNIVERSAL TRANSVERSE MERCATOR 10,000-FOOT STATE GRID TICKS SOUTH CAROLINA, NORTH ZONE UTM GRID DECLINATION 1983 MAGNETIC NORTH DECLINATION 330 WEST VERTICAL DATUM NATIONAL GEODETIC VERTICAL DATUM OF 1929 HORIZONTAL DATUM 1927 NORTH AMERICAN DATUM To place on the predicted North American Datum of 1983, move the projection lines as shown by dashed corner ticks (9 meters south and 14 meters west) There may be private inholdings within the boundaries of any Federal and State Reservations shown on this map

PROVISIONAL MAP
Produced from original manuscript drawings. Information shown as of date of field check



SCALE 1:24 000
CONTOUR INTERVAL 6 METERS
CONTROL ELEVATIONS SHOWN TO THE NEAREST 0.1 METER
OTHER ELEVATIONS SHOWN TO THE NEAREST METER
To convert meters to feet multiply by 3.2808
To convert feet to meters multiply by .3048



1	2	3	4	5	6	7	8
Zirconia	Saluda	Landrum	Slater	Campobello	Parris Mountain	Taylor	Greer

THIS MAP COMPLIES WITH NATIONAL MAP ACCURACY STANDARDS FOR SALE BY U. S. GEOLOGICAL SURVEY, RESTON, VIRGINIA 22092

TIGERVILLE, S. C.
PROVISIONAL EDITION 1983
35082-A3-TM-024