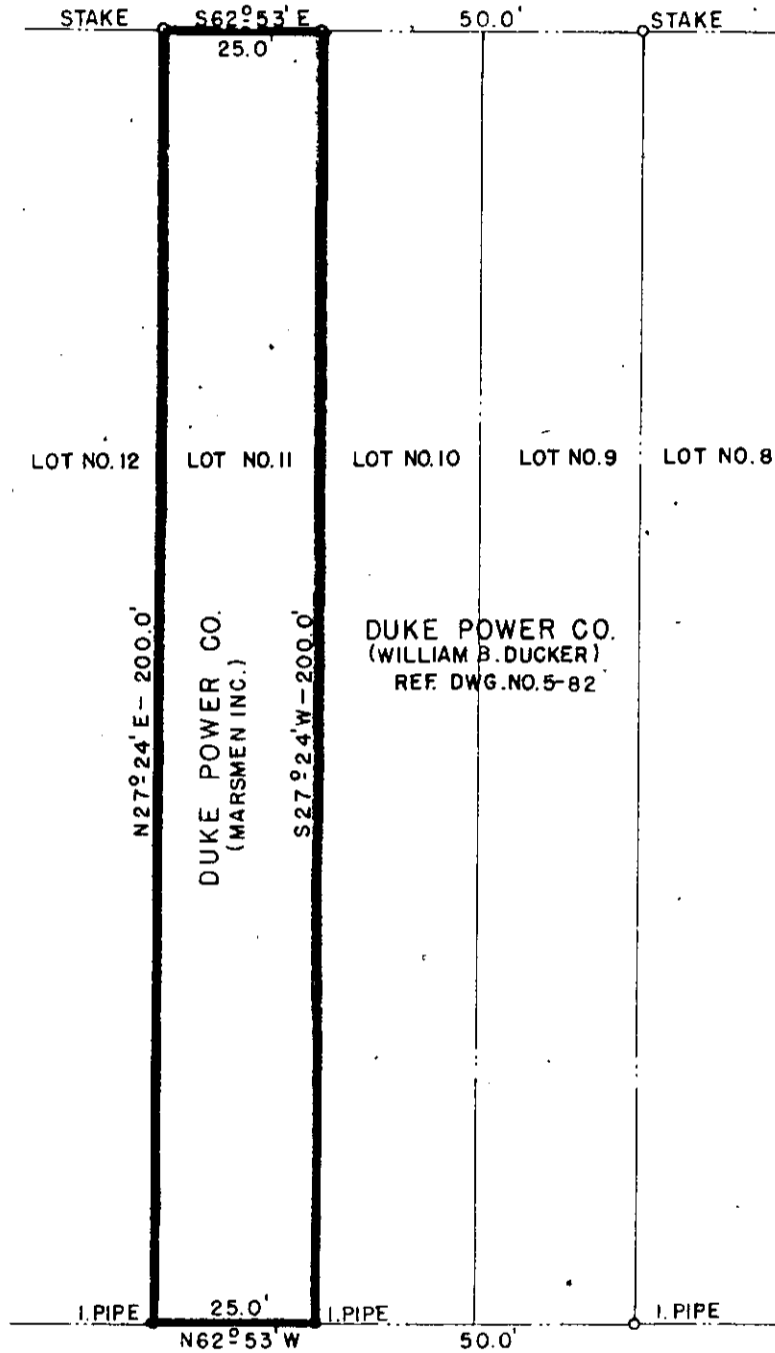
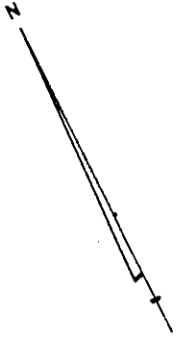


BUNCOMBE ROAD

TO GREENVILLE

SIDEWALK



DUKE POWER CO.
(MARSMEN INC.)

DUKE POWER CO.
(WILLIAM B. DUCKER)
REF. DWG. NO. 5-82

For Deed in connection with this plat See Page 508 in this Book

NOTE:
PLOTTED FROM
MAP MADE BY
DALTON B NEVES, DATED
MAY 1944, GREENVILLE, S.C.

REF:
SEE PLAT BOOK O, PAGE NO. 7
GREENVILLE COUNTY REGISTRY

DUKE POWER COMPANY
SUBSTATION LOT
ACQUIRED FROM
MARSMEN, INC.
GREENVILLE, S.C.

JAN 10 1950 100
726

SCALE: 1" = 30' DEC. 16, 1949
BOOK NO. 297 FILE NO. 5-81

Recorded January 10th. 1950 at 4:03 P. M. #726