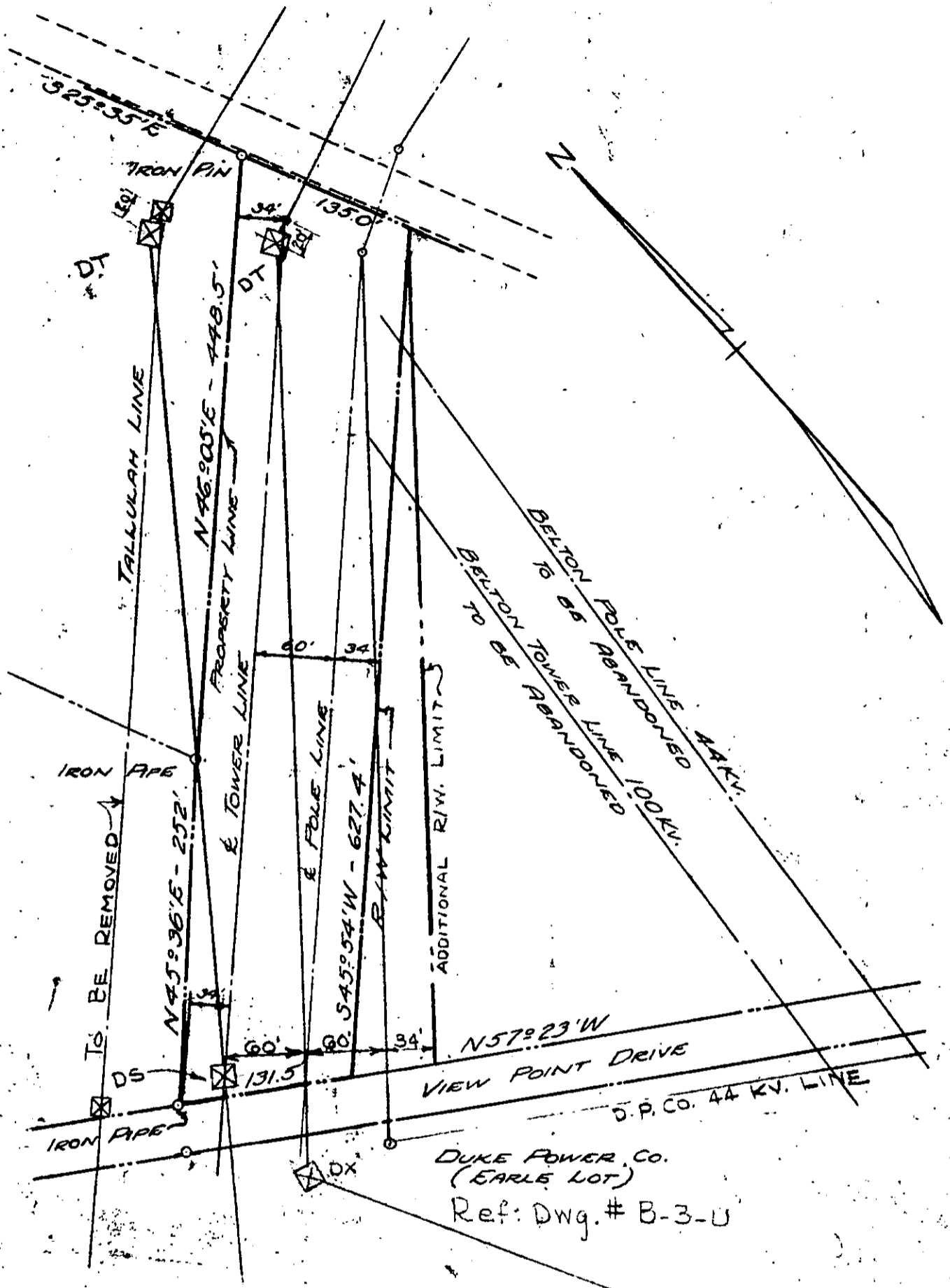


See B/W in connection with this Plat see Page 135 in this Book



DUKE POWER CO.
 (EARLE LOT)
 Ref: Dwg. # B-3-U

DUKE POWER COMPANY
 PLAT OF
 RIGHT OF WAY FOR TRANSMISSION LINE
 ACQUIRED FROM
 MRS. INDIA E. PEPPER & MISS LOUISE EARLE
 GREENVILLE, S. C.

SCALE: 1" = 100'
 FILE NO. A-26-W
 JAN. 1, 1940
 BOOK NO. 193

FILE NO. B-24

Recorded July 17th. 1950 at 4:32 P. M. #17166

8-24