

State of South Carolina }  
County of Greenville }

Court of Common Pleas.

IN THE COUNTY COURT

FILED  
GREENVILLE CO. S. C.

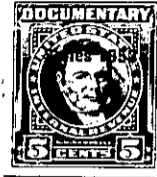
FEB 22 11 18 AM 1954

LILLIE FARMS WORTH  
R.M.F.

To All to Whom These Presents May Come:

I, E. Inman, Master in and for the County aforesaid, SEND GREETING:

WHEREAS, Citizens Lumber Company, a Corporation



on or about the 22nd day of August in the year of  
our Lord nineteen hundred and fifty-three exhibited its  
County  
complaint in the Court of Common Pleas for the County aforesaid, against

Robert Grady Coleman, et al,



demanding judgment in relation to the real estate hereinafter mentioned and described; and the cause at issue,  
came on to be heard on the 15th day of October 1953, and such proceedings  
were had therein as resulted in a decree of the said Court, whereby it was adjudged and decreed that the  
said real estate hereinafter mentioned and described, be sold by E. Inman, Master in and for the County afore-  
said, on the terms and for the purposes mentioned in the said decree as by reference thereto on file in said  
Court, will appear; and the Master, after having duly advertised the said real estate for sale by public out-  
cry on the 2nd day of November in the year of our Lord nineteen hundred and  
fifty-three did then openly and publicly, according to the custom of auction, sell and dispose of  
the same unto Citizens Lumber Company, a Corporation

for the sum of Thirty-One Thousand Four Hundred (\$31,400.00) and no/100  
Dollars,  
being at that price the highest bidder therefor.

167-9-14, 19, 20 \$ 28 \$ D4-4-138