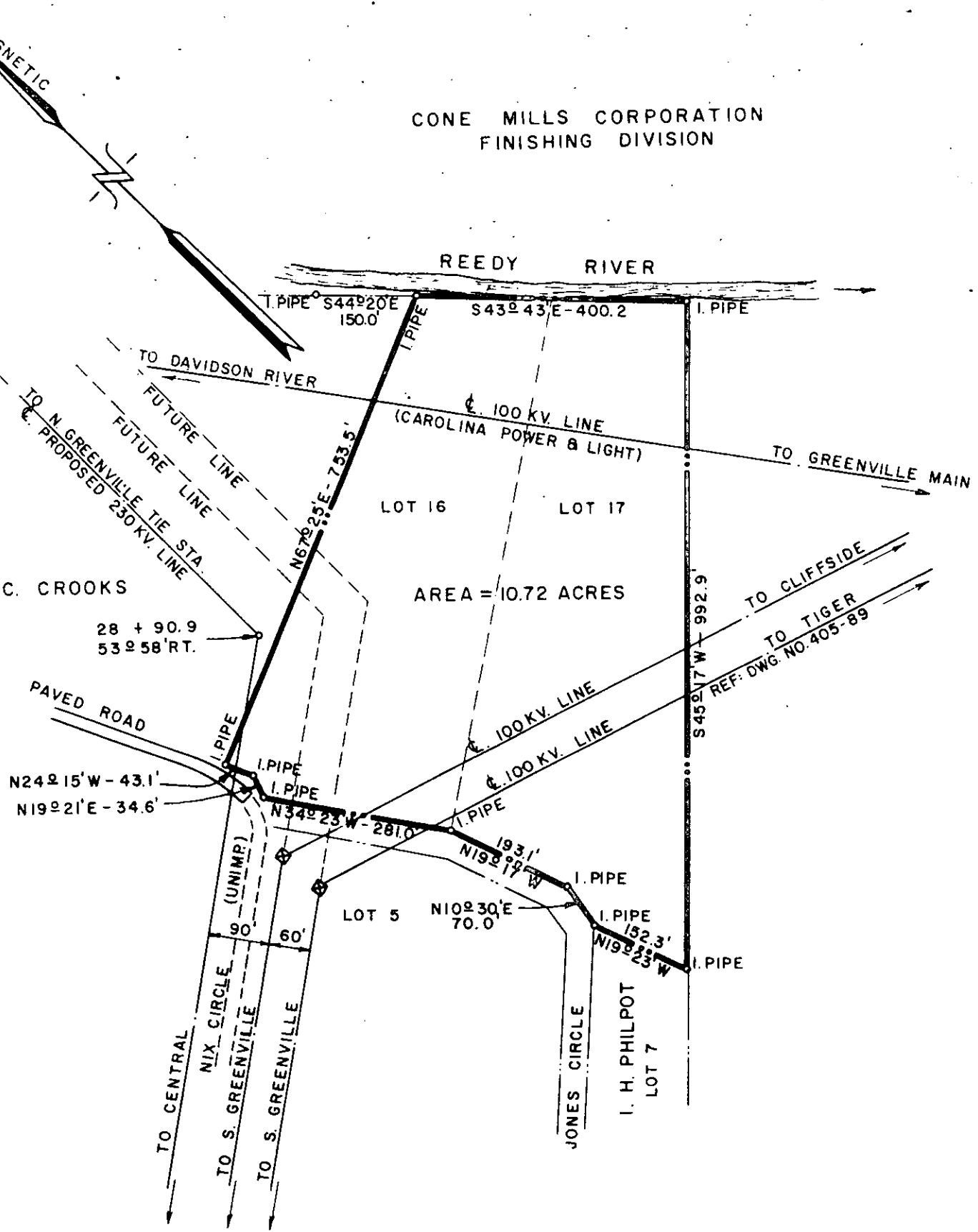


CONE MILLS CORPORATION  
FINISHING DIVISION

Plat Recorded September 12th, 1961, at 2:40 P.M. #6748



DUKE POWER COMPANY  
 TRANSMISSION LOT  
 ACQUIRED FROM  
**EARL S. LOCKEE**  
 FOR  
**NORTH GREENVILLE TIE-CENTRAL**  
 TRANSMISSION LINE  
 GREENVILLE, S. C.  
 PARIS MOUNTAIN TOWNSHIP  
 GREENVILLE COUNTY

SCALE: 1" = 200'  
 BOOK NO. 585  
 JULY 27, 1961  
 FILE NO. 19-62