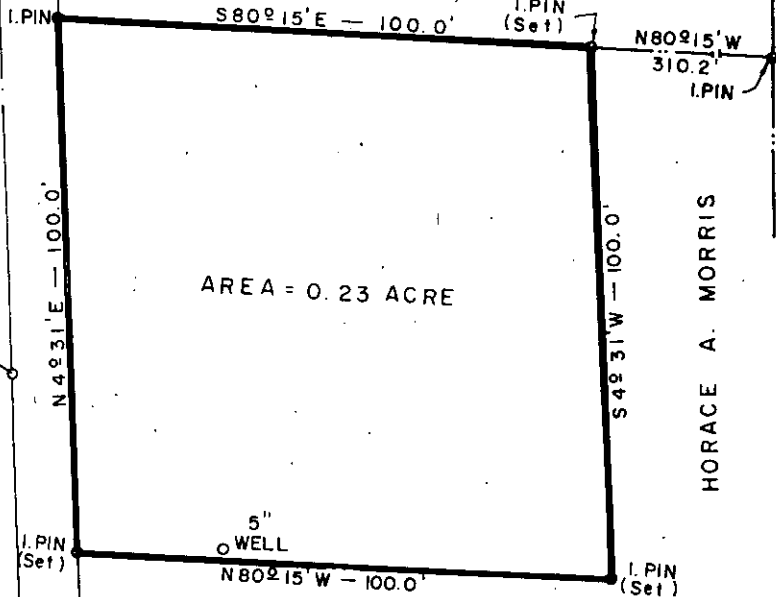


CHARLES W. DANIEL

RETAIL LINE

TEL. LINE



HORACE A. MORRIS

LAKE CIRCLE ROAD

RETAIL & TEL. LINE



HORACE A. MORRIS

DUKE POWER COMPANY
 PARIS MOUNTAIN MICROWAVE TOWER SITE
 ACQUIRED FROM
 HORACE A. MORRIS
 NEAR GREENVILLE, S.C.
 PARIS MOUNTAIN TOWNSHIP
 GREENVILLE COUNTY

Plat Recorded September
 22nd, 1966 at 10:11 A.M. #8098

SCALE: 1" = 30'
 MISC. BOOK NO. 228

SEPTEMBER 15, 1966
 FILE NO. 33-149