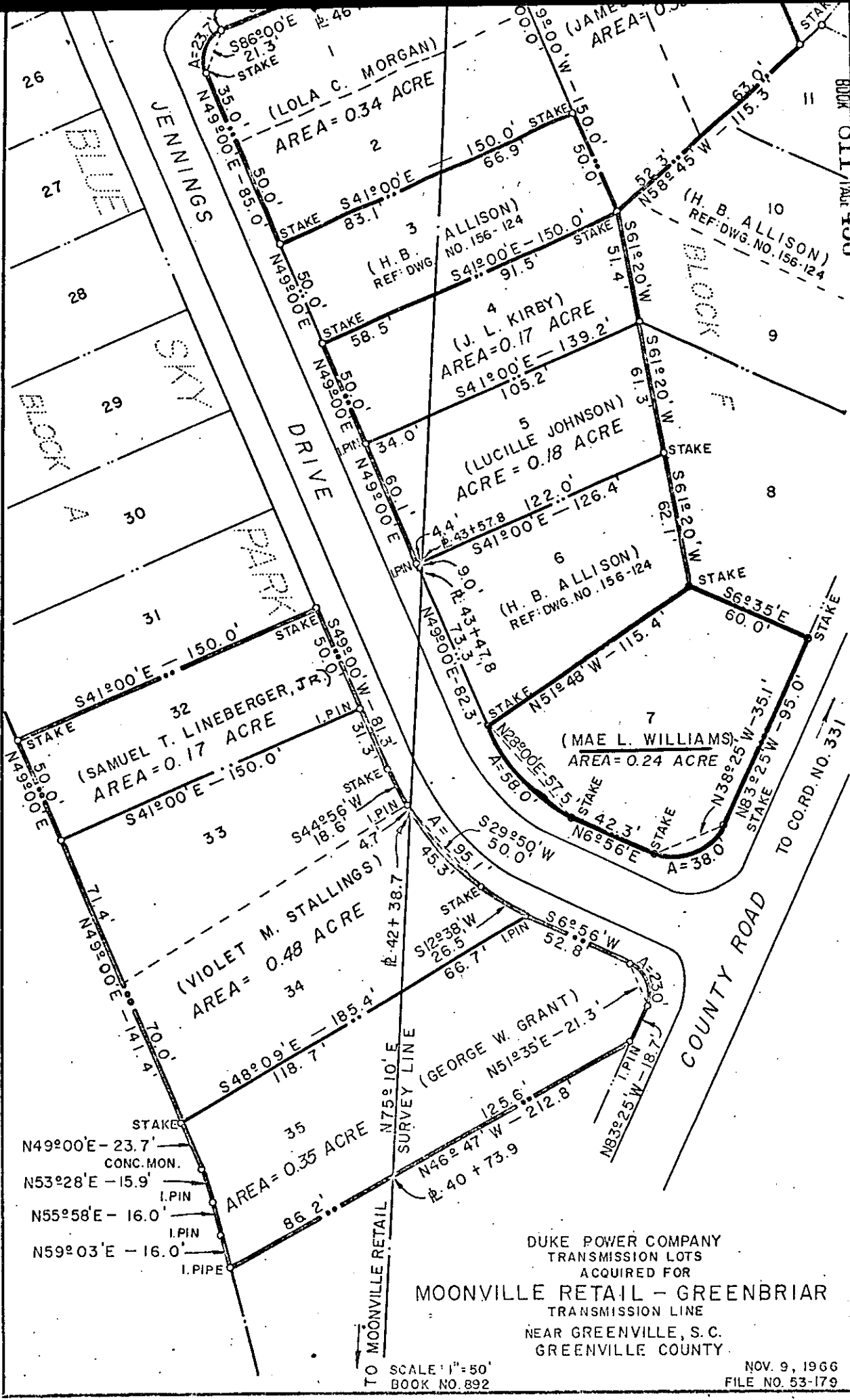


Recorded January 5th., 1967 At 11:19 A.M. # 16322



DUKE POWER COMPANY
 TRANSMISSION LOTS
 ACQUIRED FOR
MOONVILLE RETAIL - GREENBRIAR
 TRANSMISSION LINE
 NEAR GREENVILLE, S.C.
 GREENVILLE COUNTY

TO SCALE 1" = 50'
 BOOK NO. 892

NOV. 9, 1966
 FILE NO. 53-179

BOOK 811 PAGE 456