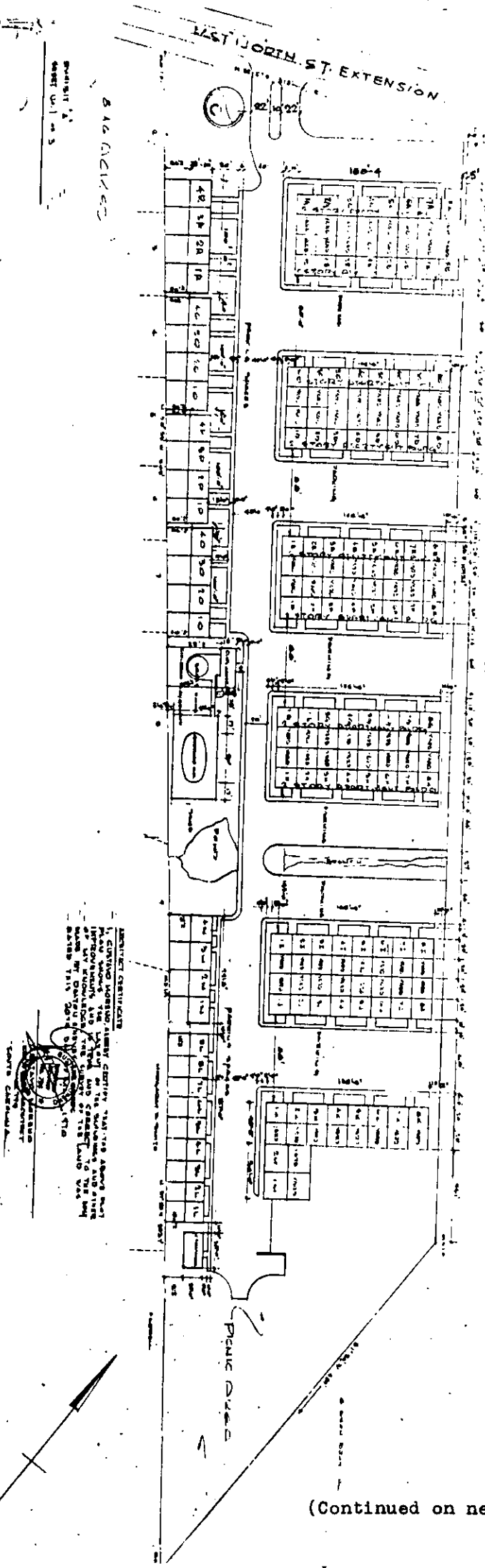


EXHIBIT "A"

The survey and plot plans are also recorded in the R. M. C. Office for Greenville County in Plat Book 4-G at Pages 69, 71 and 73, respectively and are incorporated by reference as part of the within Master Deed.

TOWN PARK OF GREENVILLE, S.C.
HORIZONTAL PROJECT BEGINS
GREENVILLE COUNTY, SOUTH CAROLINA



5.16 ACRES

APPROVED FOR THE CITY OF GREENVILLE, SOUTH CAROLINA, BY THE CITY ENGINEER, JAMES W. HARRIS, JR., ON THIS 15th DAY OF MAY, 1954.

(Continued on next page)