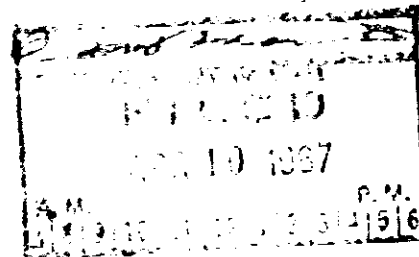


FILED
GREENVILLE CO. S. C.

FEB 17 4 30 PM '76

DONNIE S. TANKERSLEY ARTICLES OF MERGER
R.M.C.
OF
HOSA, INC.
(Subsidiary Corporation)
INTO
COMPOSITE ENTERPRISES
(Parent Corporation)



Pursuant to the provisions of Section 10.5 of the South Carolina Business Corporation Act, Composite Enterprises (Parent Corporation), a corporation organized under the Laws of the State of South Carolina, and owning at least 95% of the shares of Hosa, Inc. (Subsidiary Corporation), a corporation organized under the Laws of the State of South Carolina, hereby executes the following Articles of Merger:

1. A Plan of Merger attached hereto as Exhibit "A" and made a part hereof was approved by resolution of the Board of Directors of Composite Enterprises (Parent Corporation), adopted on March 27, 1967.

2. The number of outstanding shares of each class of the subsidiary corporation and the number of such shares of each class owned by the Surviving Corporation is:

<u>Class</u>	<u>No. of shares Outstanding</u>	<u>No. of Shares Owned by Parent</u>
Common	30,000	30,000

3. The mailing of the plan of merger to the shareholders of the subsidiary corporation was waived by all the shareholders.

COMPOSITE ENTERPRISES

By

J. P. Johnson
President

And

Graham Bennett
Secretary

March 27, 1967

APR 10 1967

BEING A TRUE AND CORRECT COPY
OF THE ARTICLES OF MERGER WITH THE
ARTICLES OF INCORPORATION.

O. J. Johnston
SECRETARY OF STATE OF SOUTH CAROLINA

(CONTINUED ON NEXT PAGE)

4328 RV-2