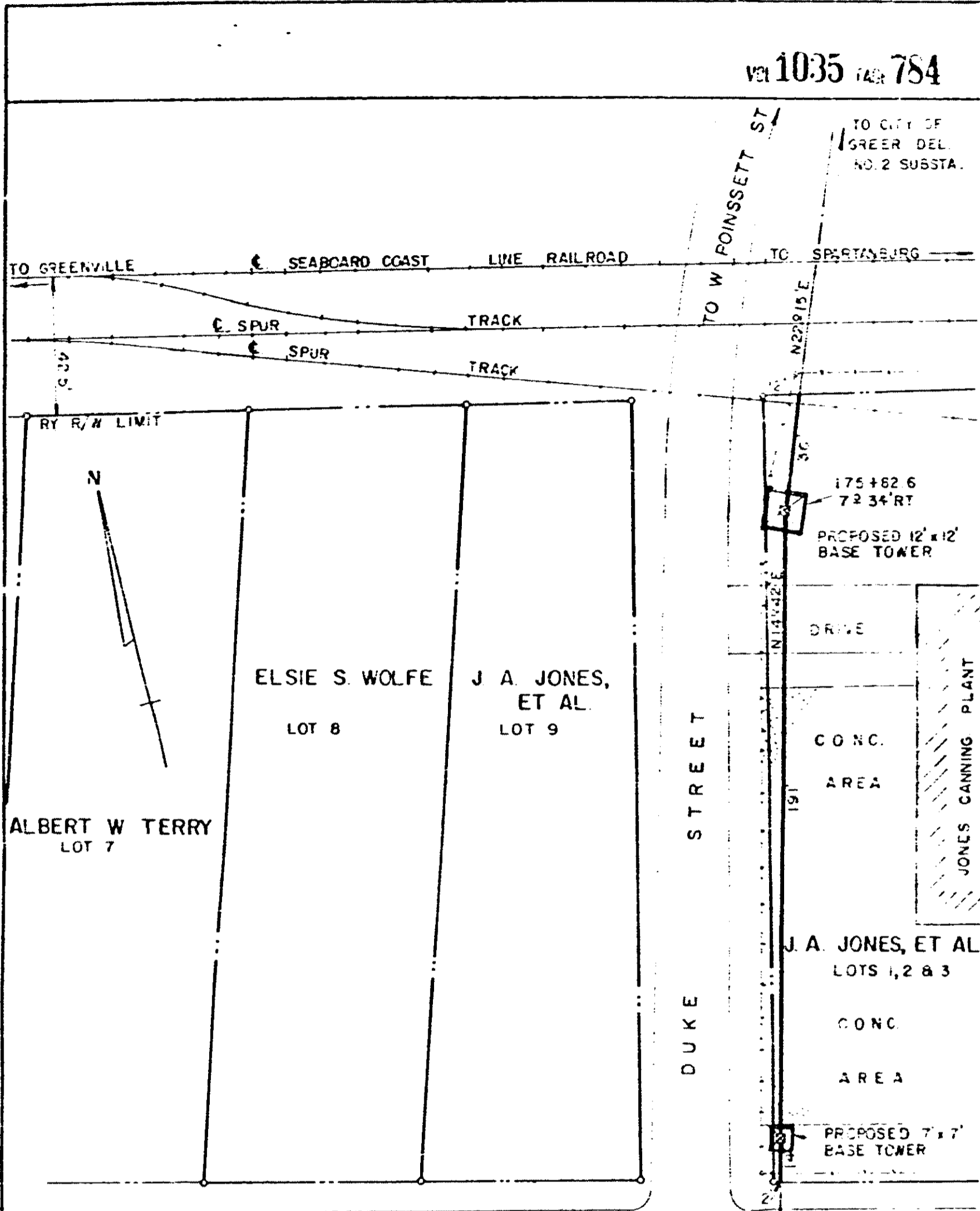


Vol 1035 Page 784



NOTE: REVISED 1-14-76  
 REVISED 3-30-76  
 REF PLAT OF ROBINSON LAND, CO. SUBDIVISION  
 BLOCK H, PLAT BK. E, PG. 234

DUKE POWER COMPANY  
 CITY OF GREER DEL. NO. 2  
 TRANSMISSION LINE  
 CROSSING PROPERTY OF  
 J. A. JONES, ET AL.

GREER, S. C.  
 CHICK SPRINGS TOWNSHIP  
 GREENVILLE COUNTY

SCALE: 1" = 40'  
 BOOK NO. 1522

OCTOBER 24, 1975  
 FILE NO. 4-79F

RECORDED MAY 5 '76 at 10:33 AM 28130

0784

4328 W-23