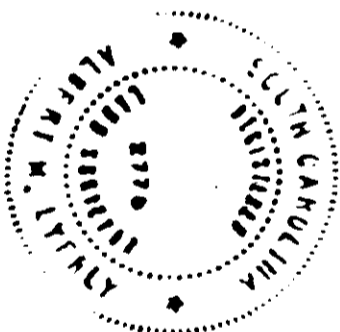
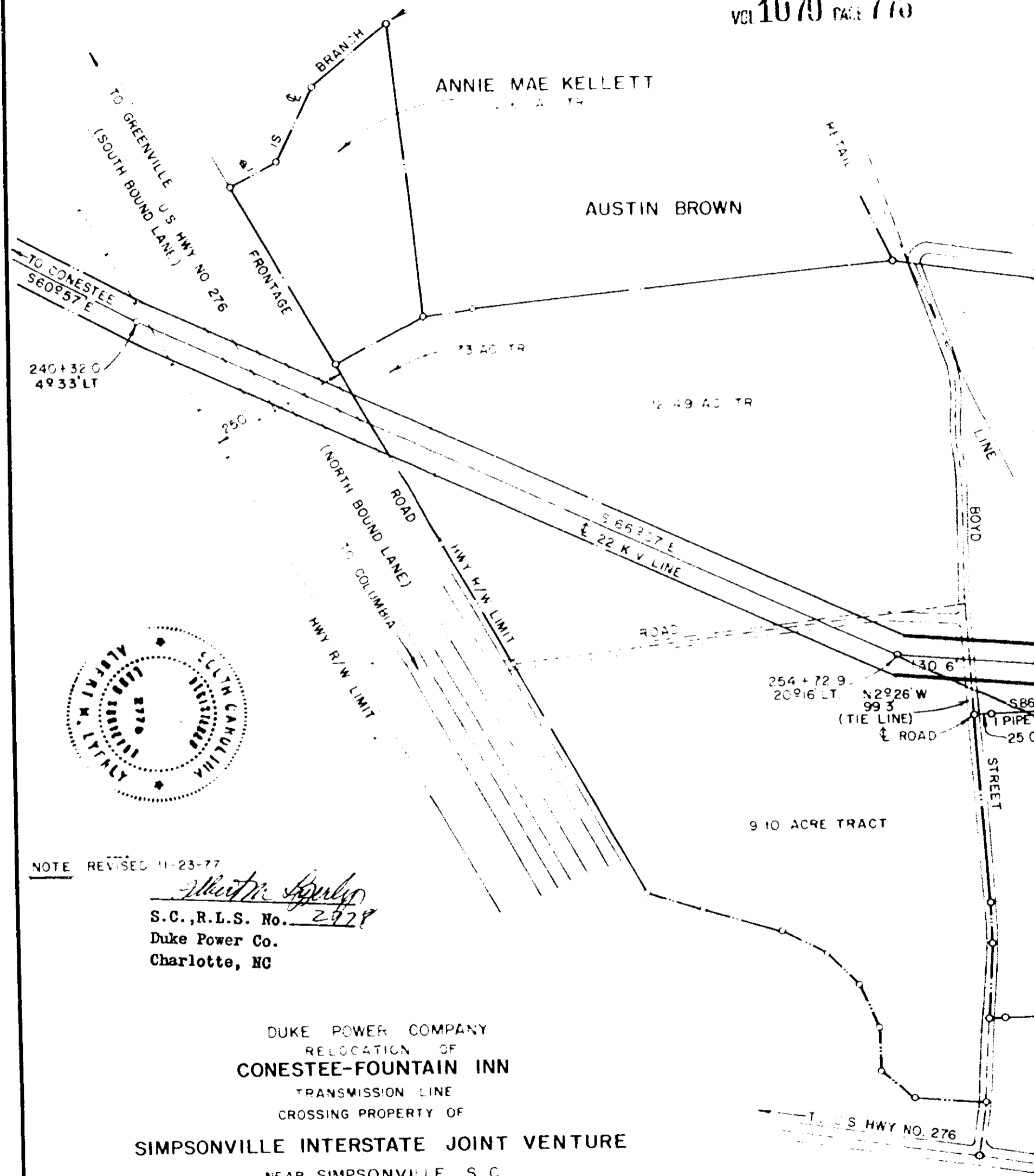


0776



NOTE REVISED 11-23-77

Albert M. Taylor
S.C., R.L.S. No. 2978
Duke Power Co.
Charlotte, NC

DUKE POWER COMPANY
RELOCATION OF
CONESTEE-FOUNTAIN INN
TRANSMISSION LINE
CROSSING PROPERTY OF
SIMPSONVILLE INTERSTATE JOINT VENTURE
NEAR SIMPSONVILLE, S. C.
AUSTIN TOWNSHIP
GREENVILLE COUNTY

SCALE 1"=200'
BOOK NO 1517

JANUARY 23, 1976

19262

FILE NO 159-111 RECORDED DEC 27 1977 At 10:36 A.M.

4328 RV-21