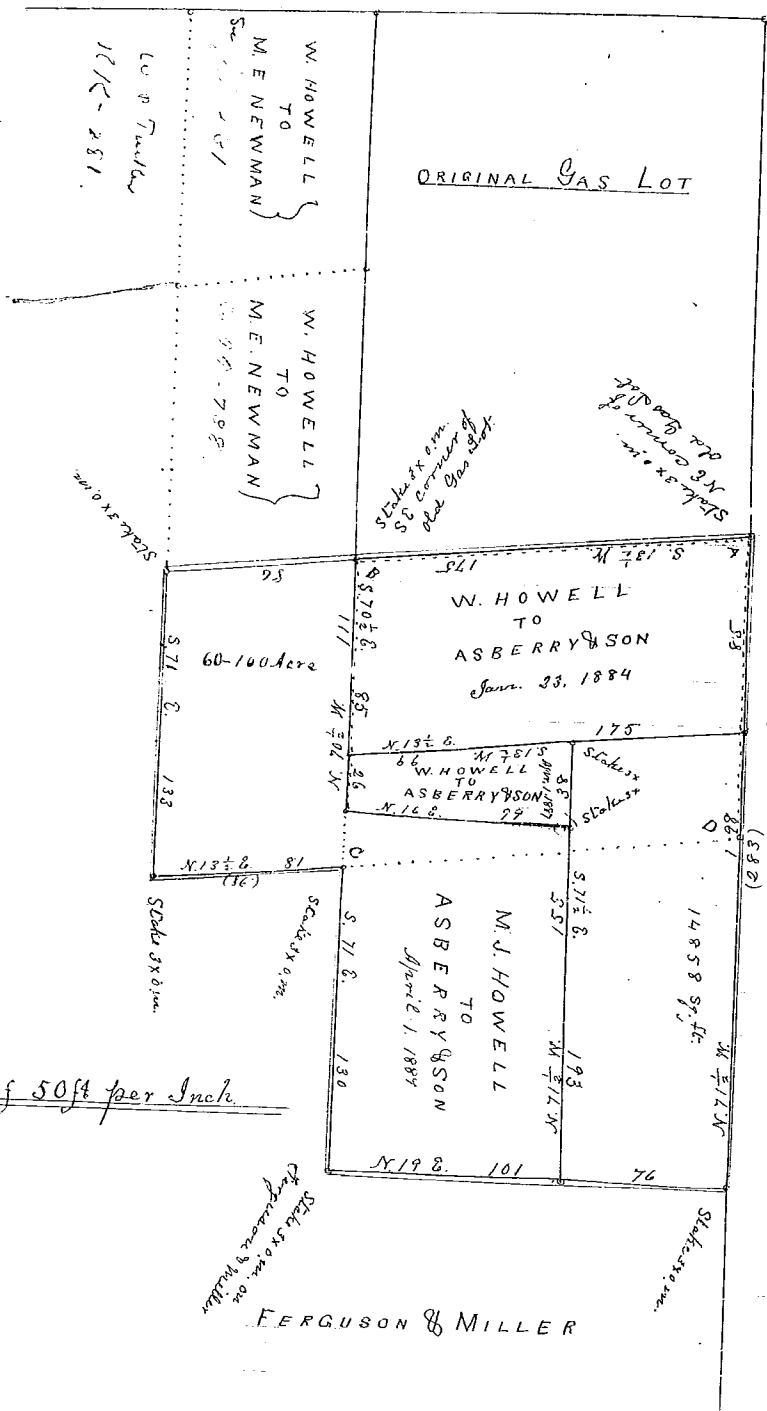


10  
\*

See Deed recorded in Book 999 pg 737

BOYCE STREET



scale of 50ft per Inch

The above plat represents a portion of the property owned by the Greenville Gas, Electric Light and Power Company, situated on the South Side of East Broad Street in the City of Greenville S.C. The dotted lines A B C D A, represents one half acre set off to W. Howell as a part of his Homestead May 28, 1883. Arranged and platted this 28th Jan. 1901.

(Recorded for March 1, 1901.)

J. N. Southern D.S.

END OF DOC.