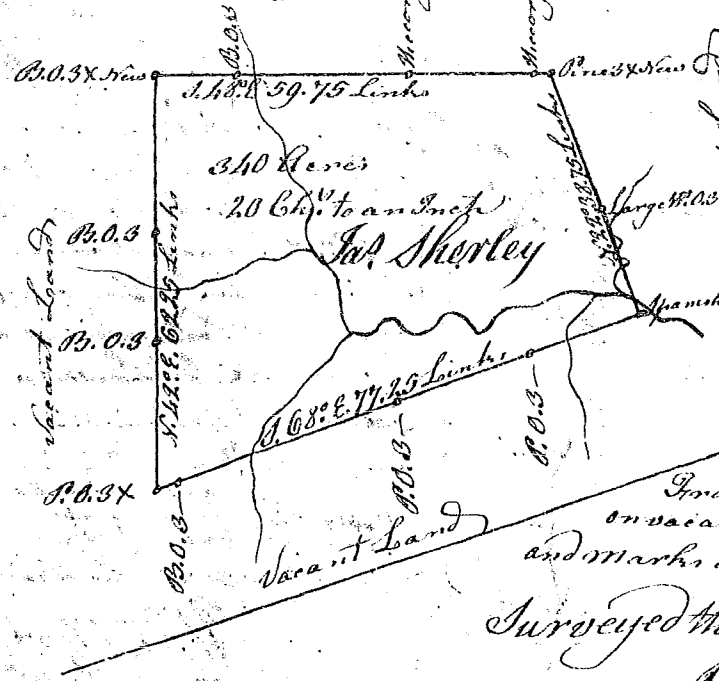


Land Surveyed for Francis Gotter (23)

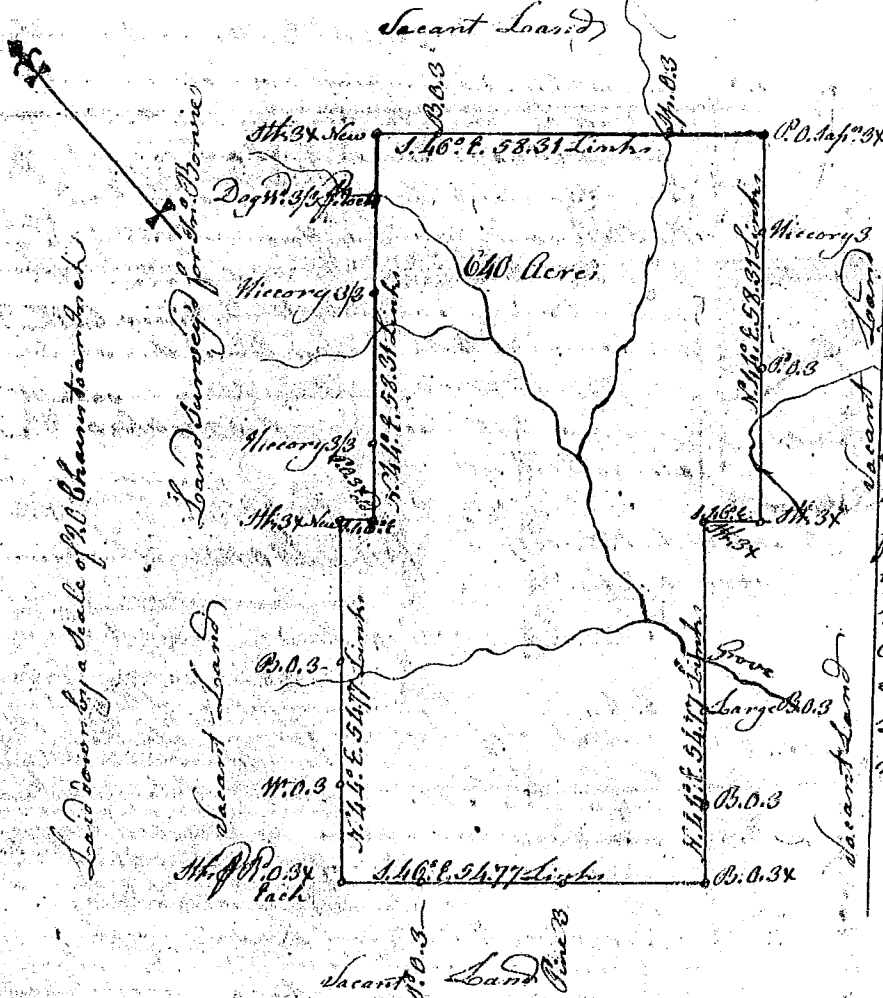
North Carolina
Pursuant to a Warrant from John Thomas Esquire Commissioner of Locations in the District of Ninety Six bearing date the 21st Day of May 1783, I have Admeasured and laid out unto James Sherley a Tract of Land containing Three hundred and forty Acres above the ancient boundary line situated on the Golden Goose Creek a branch of Saludy River, butting and bounding to the N. E. on Land Surveyed for Francis Gotter and all other sides on vacant Land and hath such form and marks as the above Plat represents.



Surveyed the 2nd Day of June 1784
John Nowell Depy. Surv.

Recorded the 1st Day of July 1784
Delivered to John Nowell

South Carolina
Pursuant to a Warrant from John Thomas Esquire Commissioner of Locations in the District of Ninety Six bearing date the 21st Day of May 1783, I have Admeasured and laid out unto Joseph Read a Tract of Land containing Six hundred and forty Acres above the ancient boundary line situate on the Golden Goose a branch of Saludy River, butting and bounding to the N. W. partly on Land Surveyed for John Bowie and partly on vacant Land, to the S. E. partly on the Said Land Surveyed for said Bowie and partly on vacant Land, and hath such form and marks as the above Plat represents.



Surveyed the 2nd Day of May 1784
John Nowell Depy. Surv.

Recorded the 1st Day of July 1784
Delivered to John Nowell

Laid down by a scale of 20 Chains to an Inch

Land Surveyed for John Bowie