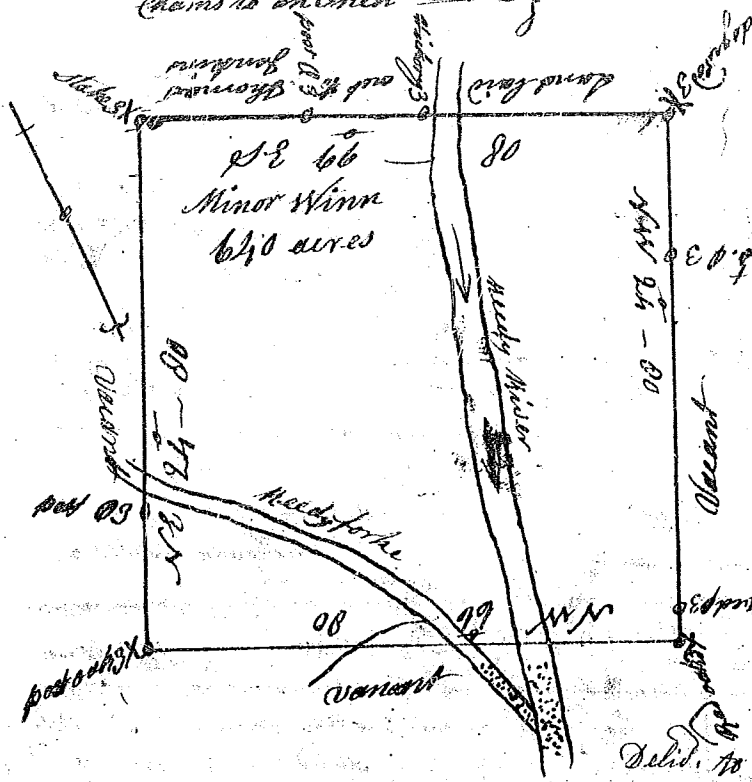


Laid Down by scale of 200
Chains to an Inch

(11)

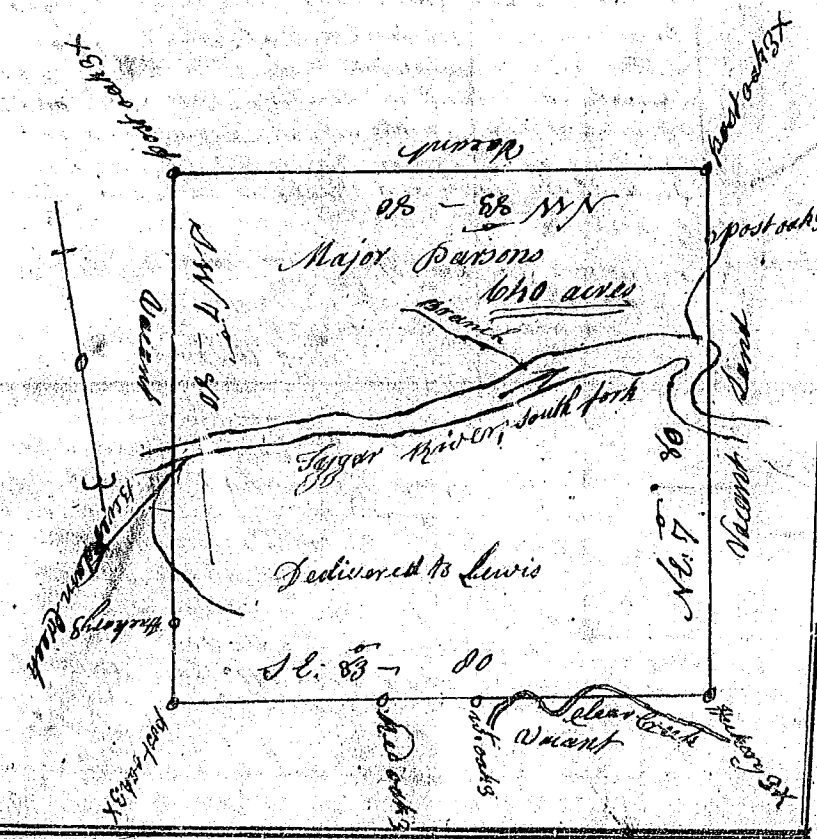
State of South Carolina

Pursuant to a warrant to me directed under the hand and seal of John Thomas Esq. Commissioner of Locations for ninety six District north of Saluda River dated the 21st day of May 1784 - I have admeasured and laid out unto Minor Winn a tract of land containing six hundred and forty acres in ninety six district north of Saluda River situate lying and being on both sides of Meedy River and Meedy fork bounding all the S.E. on lands laid out to Thomas Jenkins all other sides on Vacant Land, and hath such shape form and marks as the above plat represents,
Surveyed the 26th day of May 1784
Recorded the 15th day of July 1784
Thos Lewis Esq.
Lewis



South Carolina

Pursuant to a warrant to me directed under the hand and seal of John Thomas Esq. Commissioner of Locations for ninety six District north of Saluda River dated the 21st of May 1784 I have admeasured and laid out unto Major Parsons a tract of land containing six hundred and forty acres situate lying and being in ninety six district north of Saluda River on both sides of the south fork of Sygar River, bounding on all sides by Vacant Land, and hath such shape form and marks as the above plat represents
Surveyed the 1st day of June 1784
Thomas Lewis
Recorded the 15th July 1784
D.S.



State S.C. Carolina
Pursuant to a warrant from under the hand and seal of John Thomas Esq. Commissioner of Locations north Saluda River - I have admeasured and out unto Edward Hooker a tract of land containing 192 acres in Ninety six district below the Indian Boundary on proathers Creek branch of Sygar River bounded on all sides on Vacant land and hath such shape and marks as the above plat represents -
Surveyed this 23rd June 1784
Recorded the 15th July 1784
Edw. to E. Hooker
Robert Hanna
Esq.

