

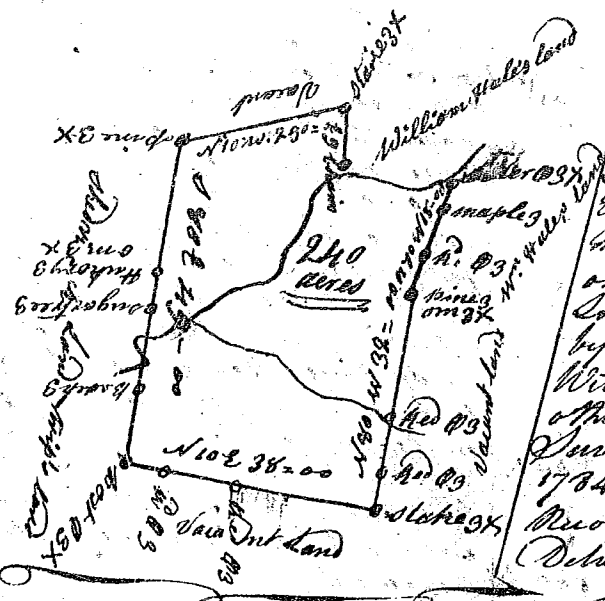
Below is Indian boundary

### South Carolina

Pursuant to a warrant from under the hand seal of John Thomas Esq. Commissioner of Locations for the North side of Saluda river bearing date the first day of June 1784 I have admeasured & laid out unto Thomas Brandon Esquire a plantation or tract of land containing two hundred & forty acres lying & being in 9<sup>th</sup> District on both sides of a creek called Fair forest, bounded South Eastwardly by Shadrach Land & to the East by vacant land and to the Northwest by vacant land William Nailey land & vacant land and hath such other shape & marks as the above plat represents Surveyed this 15<sup>th</sup> day of July Annoque Domini 1784

J. Waters D.S.

Recorded the 16<sup>th</sup> July 1784 - Delivered to William Brandon.



### South Carolina

Pursuant to a warrant to me directed under the hand and seal of John Thomas Esq. Commissioner of Locations for ninety six district north of Saluda river dated the 2<sup>nd</sup> of May 1784 I have admeasured and laid out unto Samuel Terrance a tract of land containing one hundred and seventy two acres in ninety six district north of Saluda river, situate lying and being on Meedy River, bounding on the N.E. on land laid out to Joel Shandor, on the S.E. by Meedy River and on the S.W. by the old Indian line and hath such shape form and marks as the above plat represents

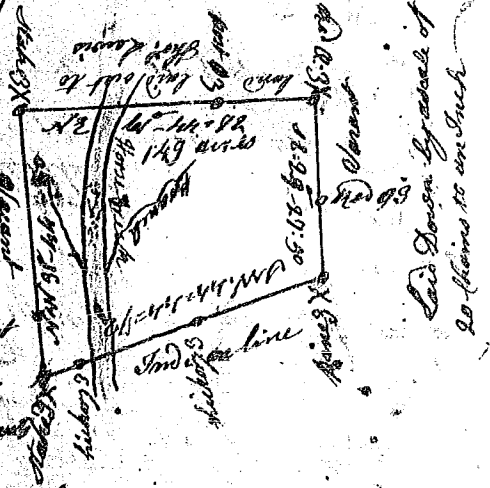
Surveyed the 2<sup>nd</sup> day June 1784  
Recorded the 19<sup>th</sup> July 1784 - Thomas Lewis D.S.



### South Carolina

Pursuant to a warrant to me directed under the hand and seal of John Thomas Esq. Commissioner of Locations for ninety six district north of Saluda river dated the 2<sup>nd</sup> day of May 1784 I have admeasured and laid out unto Samuel Terrance a tract of land containing one hundred and forty nine acres, situate lying and being in ninety six district north of Saluda river and south of Meedy River, on Horse Creek branch of Meedy River, bounding on the S.E. on vacant land S.W. by the old Indian line on the N.W. by vacant land on the N.E. by land laid out to Thomas Lewis and hath such shape form and marks as the above plat represents

Surveyed the 2<sup>nd</sup> day of June 1784  
Recorded the 19<sup>th</sup> day July 1784 - Thomas Lewis D.S.



Laid down by a scale of 20 chains to an inch