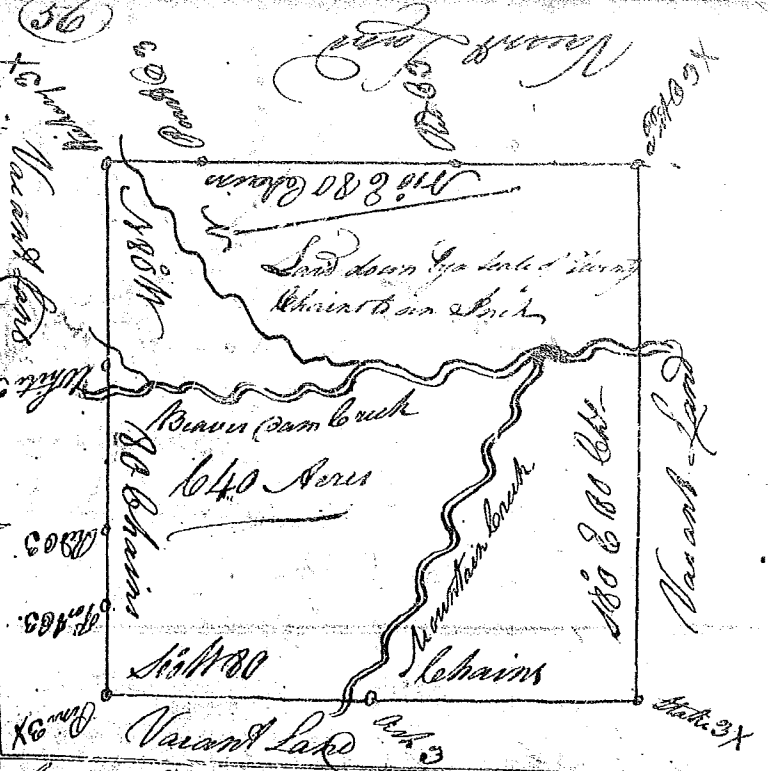
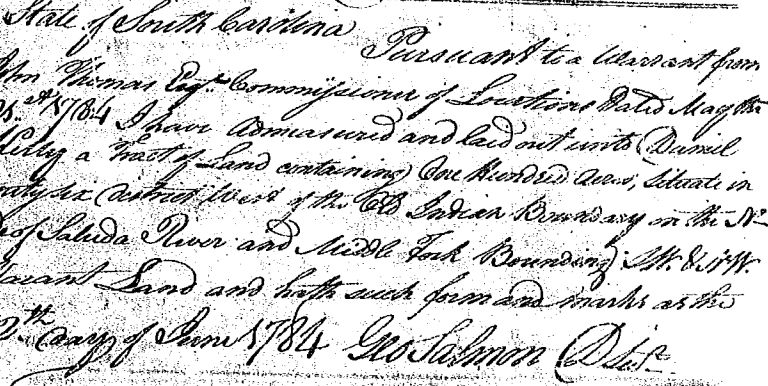


State of South Carolina Pursuant to a warrant from John Thomas Esq. Commissioner of Locations dated May the 28<sup>th</sup> 1784 I have surveyed and laid out unto William Neel a tract of land containing six hundred and forty acres situated in Ninety six District on both sides of Mountain Creek of Saluda River West of the Old Boundary line including the fork of said creek including on all sides on vacant land and both such form and marks as the above Plat represents Surveyed the 28<sup>th</sup> of May 1784  
 George Salmon Det.  
 Recorded the 27<sup>th</sup> of July 1784



State of South Carolina Pursuant to a warrant from John Thomas Esq. Commissioner of Locations dated May the 28<sup>th</sup> 1784 I have surveyed and laid out unto William Neel a tract of land containing one hundred acres situated in Ninety six District West of the Old Indian Boundary on the N<sup>W</sup> side of Saluda River and Middle Fork Boundary Mt. 8.17 W. Above Plat represents. Surveyed the 28<sup>th</sup> day of May 1784  
 George Salmon Det.  
 Recorded the 27<sup>th</sup> day of July 1784



State of South Carolina Pursuant to a warrant from John Thomas Esq. Commissioner of Locations dated May the 28<sup>th</sup> 1784 I have surveyed and laid out unto John Neel a tract of land containing 200 acres situated in Ninety six District West of the Indian Boundary line on both sides of Rocky River of Saluda near Paris Mountain Boundary on all sides on vacant land and both such form and marks as the above Plat represents. Surveyed the 28<sup>th</sup> of May 1784  
 George Salmon Det.  
 Recorded the 27<sup>th</sup> of July 1784



State of South Carolina Pursuant to a warrant from John Thomas Esq. Commissioner of Locations dated May the 28<sup>th</sup> 1784 I have surveyed and laid out unto John Thompson a tract of land containing one hundred acres situated in Ninety six District on both sides of the Old Boundary line in a branch of Upper River including Woods Old Fork Boundary on the Mt. in land granted to John Thompson all other sides on vacant land and both such form and marks as the above Plat represents. Surveyed the 28<sup>th</sup> day of May 1784  
 George Salmon Det.  
 Recorded the 27<sup>th</sup> day of July 1784

