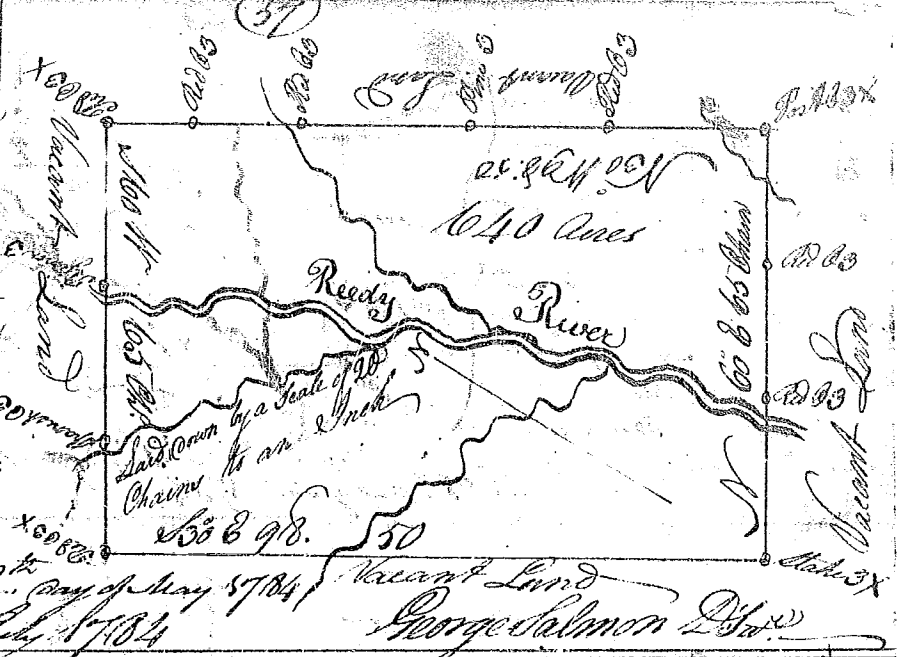
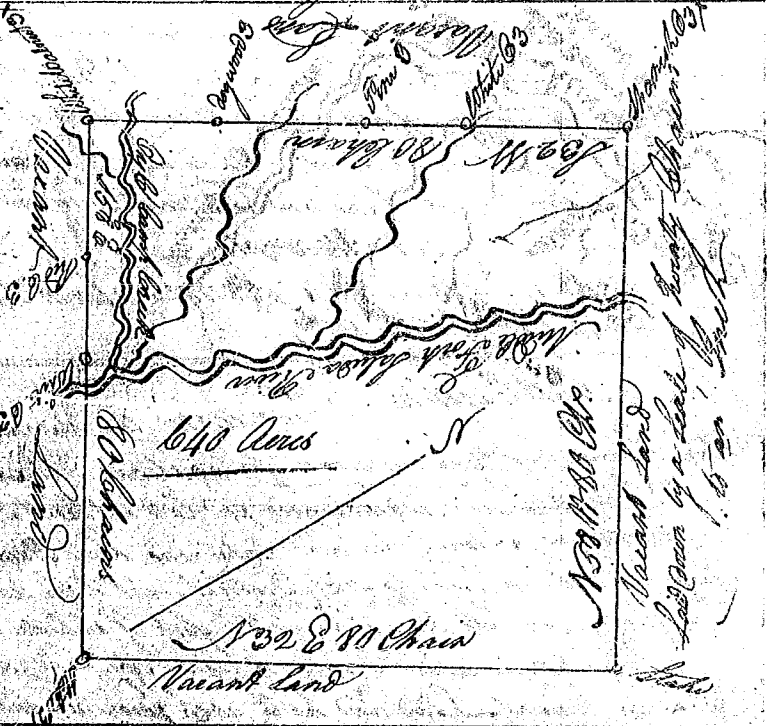


State of South Carolina Pursuant to a warrant from John Thomas Esq. Commissioner of Locations dated May the 21st 1784 I have measured and laid out unto William Brandon a Tract of Land containing six hundred and forty acres situate in Ninety Six District West of the old Boundary Line on both sides of Reedy River of Saluda River about two miles below Postons Plains (a Plantation Boundary) small sides on Vacant Land and hath such form and marks as the above Plat represents. Surveyed the 28th day of May 1784 Recorded the 27th day of July 1784



State of South Carolina Pursuant to a Warrant from John Thomas Esq. Commissioner of Locations dated May the 21st 1784 I have measured and laid out unto John Brandon a Tract of Land containing six hundred and forty acres situate in Ninety Six District West of the old Boundary Line on both sides of the Middle fork of Saluda River including the Mouth of the Mill Camp Creek and hath such form and marks as the above Plat represents. Surveyed the 24th day of May 1784 Recorded the 27th day of July 1784



State of South Carolina Pursuant to a warrant from John Thomas Esq. Commissioner of Locations dated May the 21st 1784 I have measured and laid out unto David Humphreys a Tract of Land containing six hundred and forty acres situate in Ninety Six District West of the old Indian Boundary, on both sides of the Beaver Dam Fork of Mountain Creek of Saluda River Boundary NW on said laid out for William Neel all other sides on Vacant Land and hath such form and marks as the above Plat represents. Surveyed the 28th day of May 1784 Recorded the 27th day of July 1784

