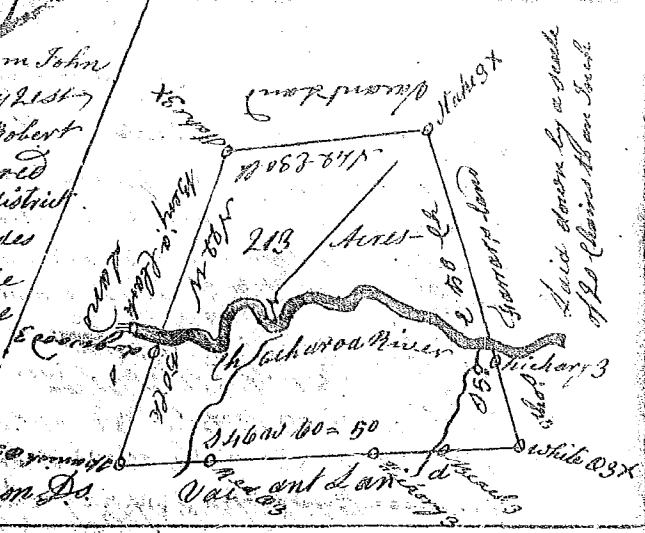


State of South Carolina

172

Pursuant to a warrant from John Thomas Esq. Commissioner of Locations dated May 1st 1784 I have admeasured and laid out unto Robert Anderson a tract of land containing Two hundred and thirteen Acres situate in Ninety six district west of the old Indian Boundary on both sides of Checharoa River of Saluda Bounding on the NW on lands laid out unto Benjamin Clarke on the SE on lands laid out unto Thomas Harris all other sides on Vacant Land and hath such form and marks as the above plat represents

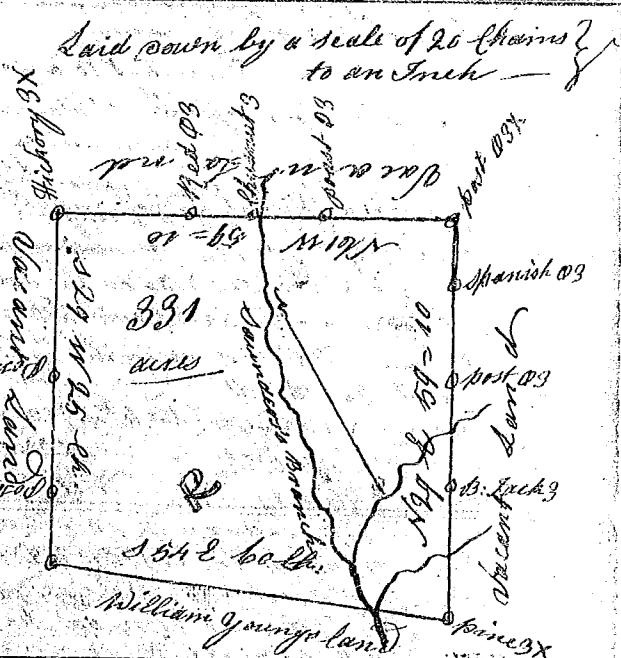
Surveyed the 3^d of June 1784
 Recorded the 6th day of August 1784 / George Salmon Esq.



State of South Carolina

Pursuant to a warrant from John Thomas Commissioner of Locations dated May 2^d 1784 I have admeasured and laid out unto James M. Elroy a tract of land containing Three hundred and thirty one acres situate in Ninety six District west of the ancient Boundary line on both sides of Sanders Branch of Needy River about four miles above Parriss old plantation Bounding on the S.E. on land laid out for William Young all other sides on Vacant Land, and hath such form and marks as the above plat represents

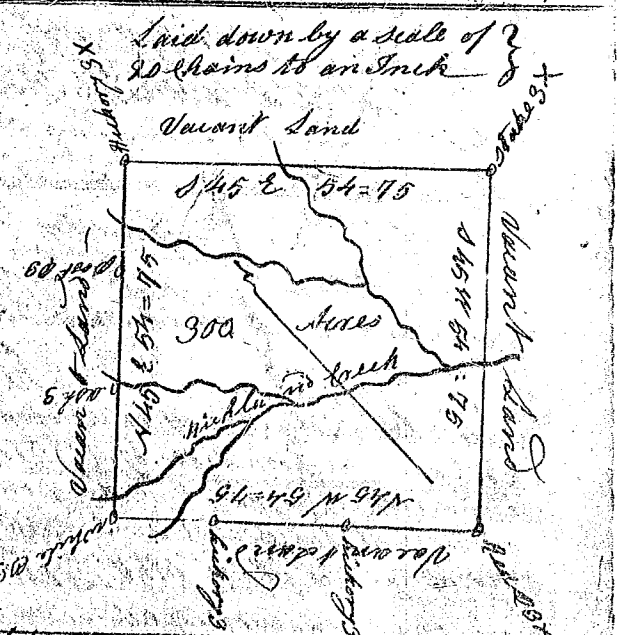
Surveyed the 25th May 1784
 Recorded 4th August 1784 / George Salmon Esq.



State of South Carolina

Pursuant to a warrant from John Thomas Esq. Commissioner of Locations dated May 2^d 1784 I have admeasured and laid out unto David Goodlett a tract of land containing three Hundred Acres situate in Ninety six District west of the old Boundary line on both sides of Richland Creek of Needy River near Michard Parriss old plantation Bounding on all sides on Vacant Land, and hath such form and marks as the above plat represents

Surveyed the 1st May 1784
 Recorded the 1st August 1784 / George Salmon Esq.



State of S. Carolina

Pursuant to a warrant from John Thomas Esq. Commissioner of Locations dated May 2^d 1784 I have admeasured and laid out unto John Barton a tract of land containing Two hundred Acres situate in Ninety six District west of the old Indian Boundary on both sides of Richland Creek of Needy River near Michard Parriss old plantation Bounding N.E. on land laid out for John Timmons all other sides on Vacant Land and hath such form and marks as the above plat represents

Surveyed the 5th day of July 1784
 Recorded the 1st Aug. 1784 / George Salmon Esq.