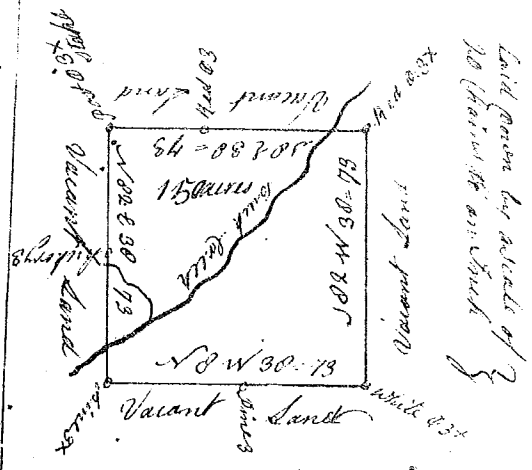


State of South Carolina

Pursuant to a warrant from John Thomas Esq. Commissioner of Locations dated June 24th 1784. I have Admeasured and laid out unto John Hightower a tract of Land Containing One Hundred and fifty acres Situate in Ninety six District East of the Old Indian Boundary on both sides of Bush Creeks of Pacolates River Bounding on all sides On Vacant Land and hath such form and Marks as the above plat Represents

Surveyed the 26th of July 1784

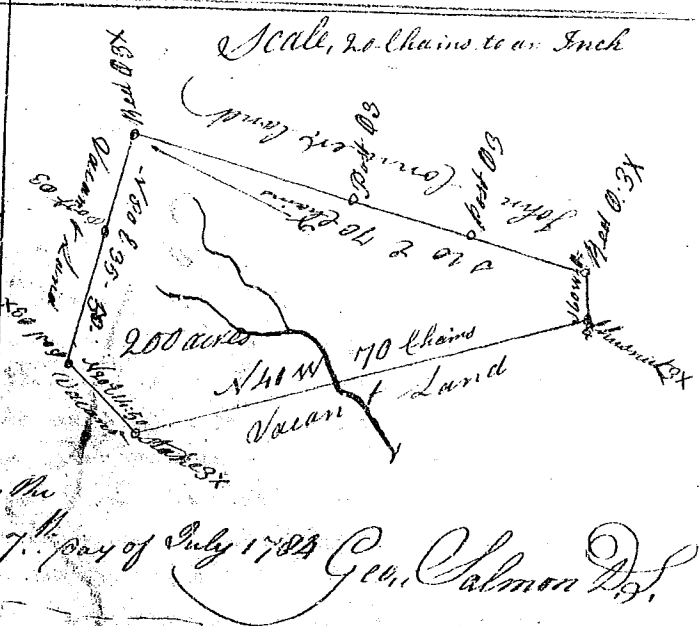
Recorded the 23rd Aug^r 1784 Geo. Salmon D^y



State of South Carolina

Pursuant to a warrant from John Thomas Esq. Commissioner of Locations dated the 23rd day of July 1784. I have Admeasured and laid out unto Jesse Remey a tract of land Containing two Hundred acres Situate in Ninety six District East of the old Indian Boundary line on the head branches of Bush Land Creek of Pacolates River Bounding to the W. on lands granted John Conner all other sides on Vacant Land and hath form and marks as the

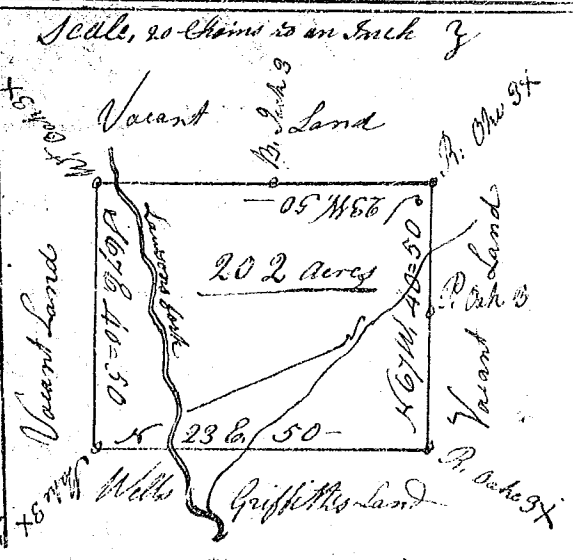
above plat Represents Surveyed the 27th day of July 1784 Geo. Salmon D^y
Recorded the 23rd day of August 1784



State of South Carolina

Pursuant to Warrant from John Thomas Esq. Commissioner of Locations Dated the 14th day of July 1784 I have Admeasured and laid out unto Thomas Wood a tract of Land Containing Two hundred & two acres situate in Ninety six District East of the old Boundary on both sides of Laursons fork of Pacolates River Bounding to the W. on lands laid out for Wells Griffith all other sides on Vacant Land and hath such form and marks as the above plat Represents Surveyed the 28th day of July 1784

Recorded the 23rd of Aug^r 1784 Geo. Salmon D^y



State of South Carolina

Pursuant to a warrant from John Thomas Esq. Commissioner of Locations 14 July 1784 I have admeasured and laid out unto Matthew Abett a tract of Land containing one hundred & sixty acres situate in Ninety six district west of the old Indian Boundary on both sides of Pears dam Creek of Tiger River Bounding on all sides on Vacant Land and hath such form and marks as the above Plat Represents Surveyed the 2nd day of July 1784

Recorded the 24th day of August 1784 George Salmon D^y

