

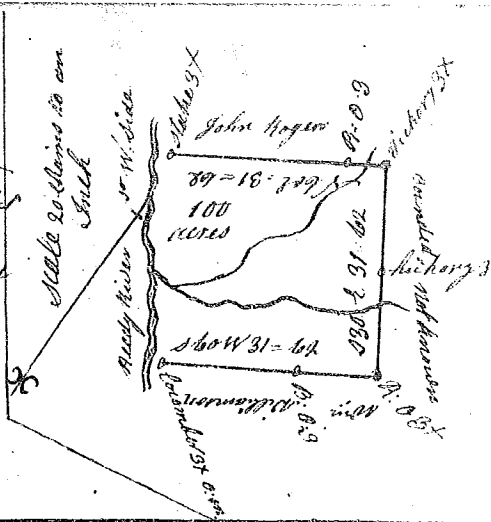
South Carolina 3

1000

Pursuant to a precept from John Bremer Deputy Surveyor genl. dated 19th Novr 1772 I have admeasured and laid out Daniel Drexon a tract of Land of one hundred acres situate in Ninety six district on north of Salassa called Needy River, Bounded on the North on William Williams's land South on land laid out for John Rogers and West not known and hath such shape and Marks and form as the above plat Represents. Surveyed the 3^d day of June 1772

Recorded the 11th Aug^r 1784

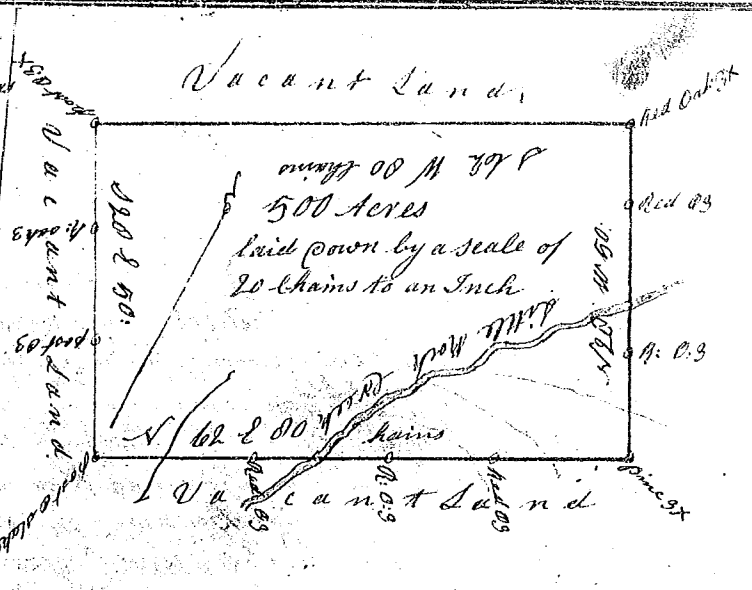
John Rogers D^s
D^s to John Rogers



State of South Carolina

Pursuant to a warrant from John Thomas Esq. Commissioner of Locations Dated the 30th day of July 1784 I have admeasured and laid out unto James Cantrel a tract of land containing four hundred acres situate in Ninety six district East of the old Indian Boundary on both sides of Little Rock Creek of Enoree River Bounding on all sides on Vacant Land, and hath such form and Marks as the above plat Represents. Surveyed the 6th day of August 1784

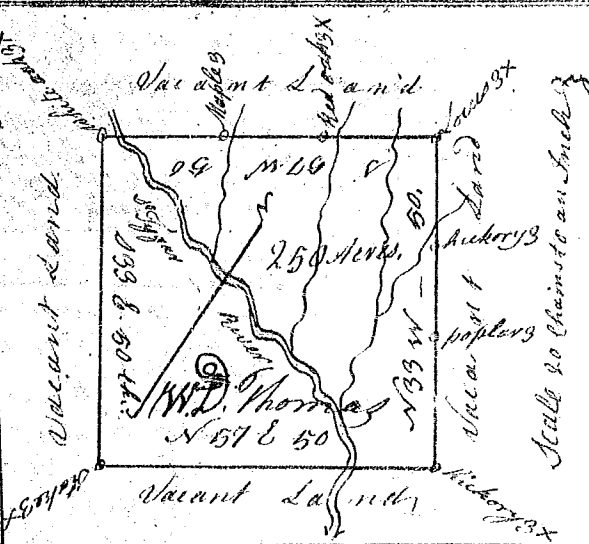
George Salmon D^s
Recorded the 26th day of August 1784



State of South Carolina

Pursuant to a warrant from John Thomas Esq. Commissioner of Locations Dated the second day of July 1784, I have admeasured and laid out unto William David Thomas a tract of land containing two hundred and fifty acres situate in Ninety six District on both sides of South Sygar River on the Middle Indian Path West of the old Indian Boundary Bounding on all sides on Vacant Land, and hath such form and Marks as the above Plat Represents. Surveyed the 9th day of July 1784

George Salmon D^s
Recorded the 24th day of August 1784



State of South Carolina

Pursuant to a warrant from John Thomas Esq. Commissioner of Locations dated 21st day of May 1784, I have admeasured and laid out unto John Nichol Sr. a tract of one hundred and forty acres of land situate in ninety six district on Nash Creek including a shoal bounding N.E. on land laid out to Robert Poince and on all other sides on Vacant Land and hath such shape and Marks as the above plat Represents, Surveyed the 7th day June 1784

Recorded the 25th day of Aug^r 1784

W^m Benson D^s
D^s to Black Bay

