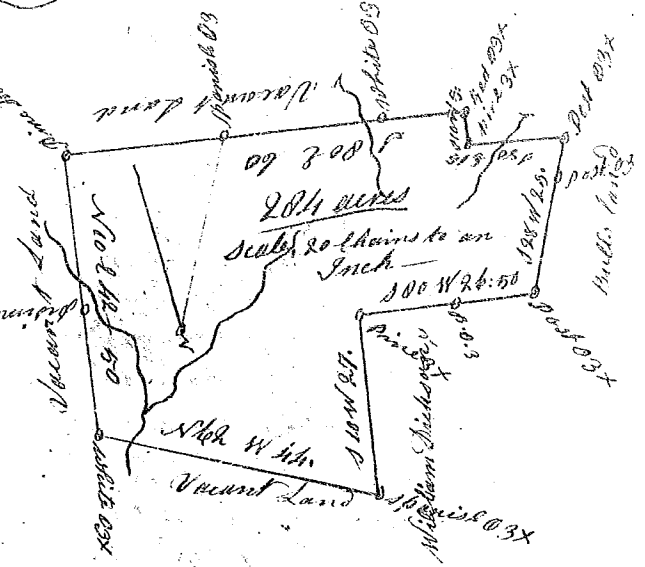


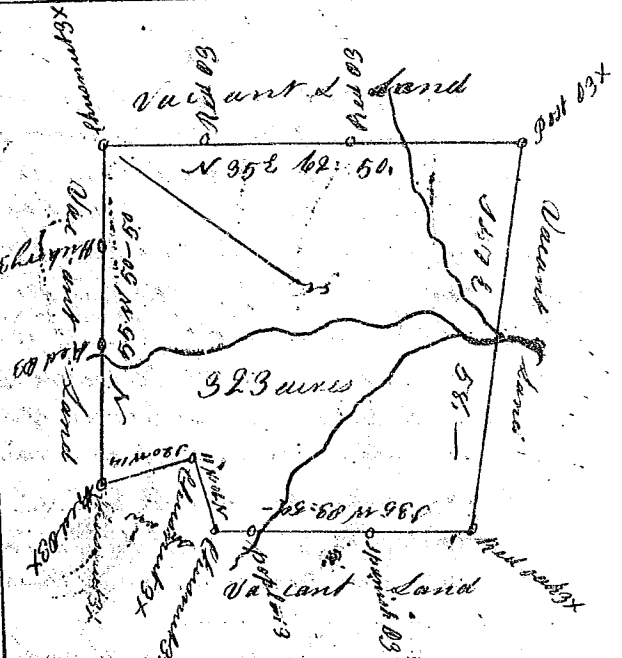
State of South Carolina

Pursuant to a warrant from John Thomas Esq. Commissioner of Locations Dated the 20th day of July 1784 I have admeasured and laid out unto John Holcom a tract of Land containing Two hundred and eighty four acres Situate in Ninety six District east of the old Indian Boundary on a branch of Saluda some fork of Pacolote River Bounding S.W. and N.W. on William Dickson's land S.W. on Bullo's land & other sides on Vacant Land and hath form and marks as the above Plat represents Surveyed the 21th July 1784, — George Salmon D.S. Recorded the 25th of August 1784.



State of South Carolina,

Pursuant to a warrant from John Thomas Esq. Commissioner of Locations dated the 20th day of July 1784, I have admeasured and laid out unto Francis Dods a tract of Land containing three hundred and twenty three acres, Situate in Ninety six District west of the old Indian Boundary on both sides of Beaver dam Creek of Tigger River Bounding N.W. and S.W. on land laid out for Shaw all sides on Vacant Land and hath such form and Marks as the above Plat represents, Surveyed the 30th day of July 1784, — George Salmon D.S. Recorded the 25th day of Aug^r 1784



State of South Carolina

Pursuant to a warrant from John Thomas Esq. Commissioner of Locations, dated the 26th day of August 1784, I have Admeasured and laid out unto Joseph Wood a tract of land containing two hundred and sixty two acres, Situate in Ninety six District West of the Ancient Boundary, on the South side of Saluda, on both sides of Thomas Beaver dam, creek of Middle Tigger River. Bounding on all sides on Vacant Land and hath such shape and marks as the above plat represents. Surveyed the 26th day of August 1784 — Wm. Benson D.S. Recorded the 27th day of August 1784

