

State of South Carolina

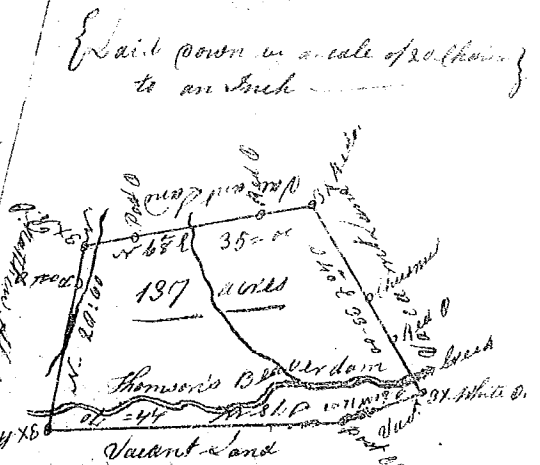
106

Pursuant to a warrant from

John Thomas Esq. Commissioner of Locations dated Aug. the 26th 1784. I have admeasured and laid out unto Joseph McCool a Tract of Land Containing One hundred and Thirty seven acres, Situate in Ninety six District West of the Ancient Boundary Line on the North side of Saluda River on Thomsons Beaver dam creek of Middle Sugar river, Bounding to the west on Matthew Abbots land & all other sides on Vacant Land, and hath such shape and marks as the above plat Represents -

Surveyed the 26th day of August 1784

Recorded the 27th day of August 1784



William Benson, D.S.

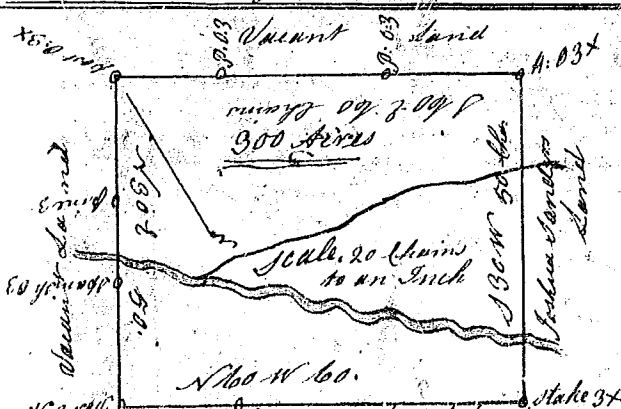
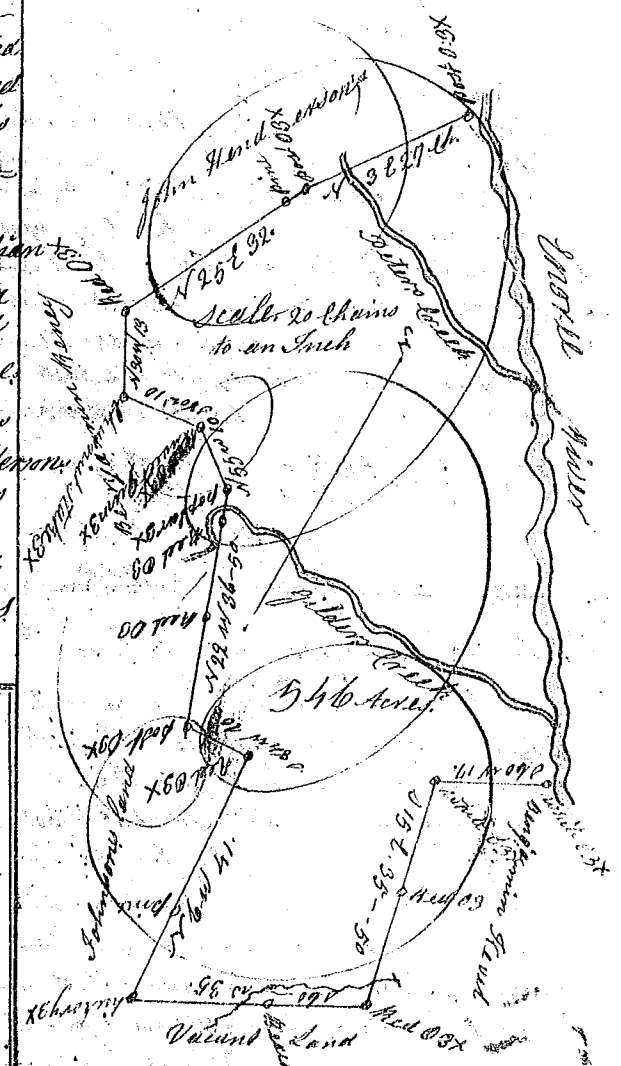
State of South Carolina.

Pursuant to a warrant from John Thomas Esq. Commissioner of Locations dated the 26th day of July 1784 I have admeasured and laid out unto William Marchbanks a tract of Land containing Five Hundred and forty six Acres situate in Ninety six District East of the Old Indian Boundary on the south side of Enoree River and on both sides of Gilders Creek of said River bounding S.W. and S.E. on Henry Rice's Land and on the N.W. on William Johnson's Land and then on the N.E. on John Henderson's Land and hath such form and marks as the above Plat Represents -

Surveyed the 5th day of Aug. 1784

George Salmon D.S.

Recorded the 27th day of August 1784



State of South Carolina. Pursuant to a warrant from John Thomas Esq. Commissioner of Locations dated the 26th day of July 1784. I have admeasured and laid out unto Sarah Robinson a tract of Land containing three hundred Acres of Land situate in Ninety six District west of the Old Indian Boundary on both sides of Peters Creek of Enoree River Bounding on the S.W. on lands laid out for Joshua Sanders, all other sides on Vacant Land, and hath such form and marks as the above Plat, (on the left hand) Represents -

Surveyed the 26th day of August 1784

George Salmon D.S.

Recorded the 27th day of August 1784