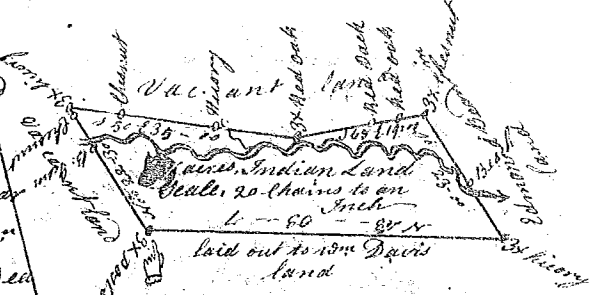


State of South Carolina

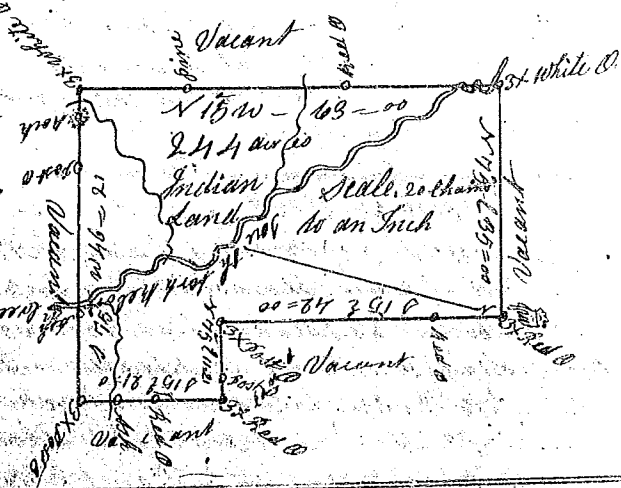
Pursuant to a warrant from John Thomas Esq. Commissioner of Locations dated the 21 day of May 1784 I have admeasured and laid out unto William Lynch a tract of eighty nine acres of land situate in Ninety six District on sink hole fork of Tyger River bounding N.E. on land laid out to Mrs. Davis and W on land laid out to Edmond Bea...



and hath such shape and marks as the above Plat represents, Surveyed the 21st June 1784 Recorded the 31 day of August 1784 Del^d to Capt. Gowin Wm. Benson D.

State of South Carolina

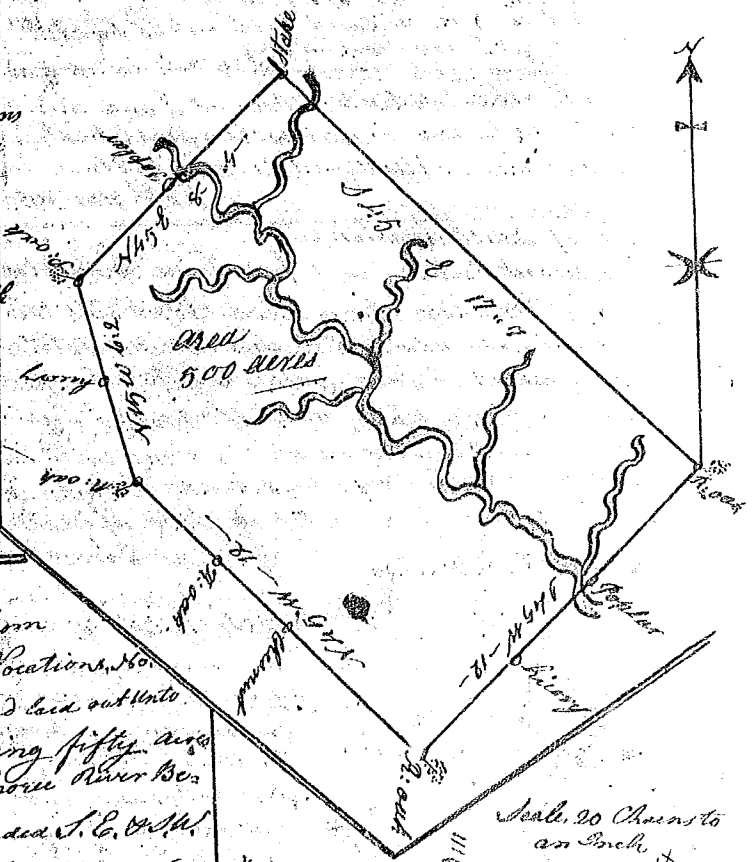
Pursuant to a warrant from John Thomas Esq. Commissioner of Locations 21 day May 1784 I have admeasured and laid out unto John Paden a tract of two hundred and forty four of land situate in Ninety six District on the branches of Meberkes Creek bounding on all sides on Vacant Land and hath such shape and Marks as are above annexed plat represents, Surveyed July 1784 Wm. Benson D.



Recorded 31 day August 1784

State of South Carolina 96 Dist

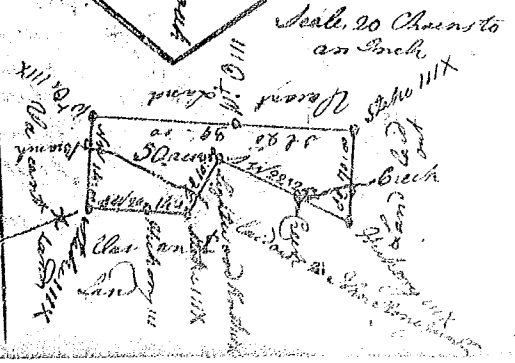
Pursuant to a warrant to me Directed by John Thomas Esq. Commissioner of Locations for the district of the North Side of Saluda River I have surveyed and laid out unto Frances Hale a tract of Land containing 500 acres situate lying and being below the ancient boundary line on both sides of Peters Creek of Raoulate River Vacant Lands on all sides and hath such shape and Marks as the annexed Plat represents Surveyed 28 Aug. 1784 James Seaborn D.



Recorded the 31 day Aug. 1784

State of South Carolina

Pursuant to a warrant from John Thomas Esq. Commissioner of Locations, No. Saluda River, I have admeasured and laid out unto Caleb Stone a tract of Land containing fifty acres on Cedar Shoal Creek a branch of Enoree River below the Indian Boundary, Bounded S. E. W. N. on John Stone's Land and all other sides on Vacant Land and hath such shape and marks as the Annexed plat represents Surveyed the 21st June 1784



Recorded the 1st Sept. 1784 Robt. Yarramant