

South Carolina

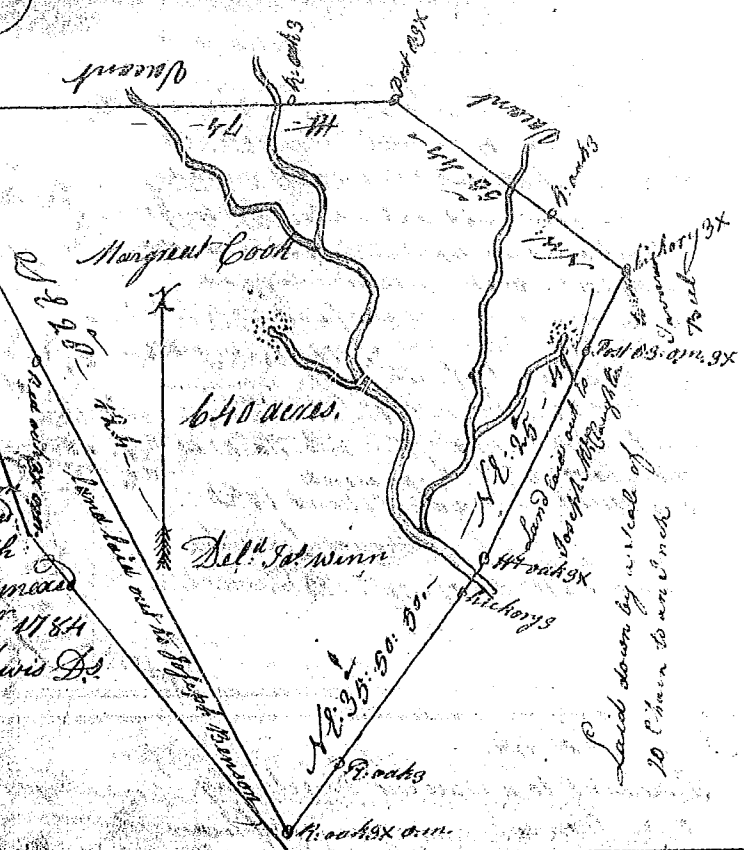
Pursuant to a warrant directed under hand and seal of John Thomas Esq: Commissioner of Locations for Ninety Six District North Side Saluda River, dated the 27<sup>th</sup> day of Aug. 1784

I have admeasured and laid out unto Margaret Cook a tract of land containing six hundred and forty acres situate lying and being above the Indian old boundary line on Maple Creek a branch of Enoree River on the North side bounding on the NE on land laid out to Joseph Merglochten and vacant land on the NW, on vacant land on the SE on vacant land on land laid out to Joseph Benson and hath such shape form and Marks as the annexed Plat Represents, Surveyed the 1<sup>st</sup> day Sept. 1784

Recorded 17<sup>th</sup> Sept. 1784.

Thomas Lewis D.

120

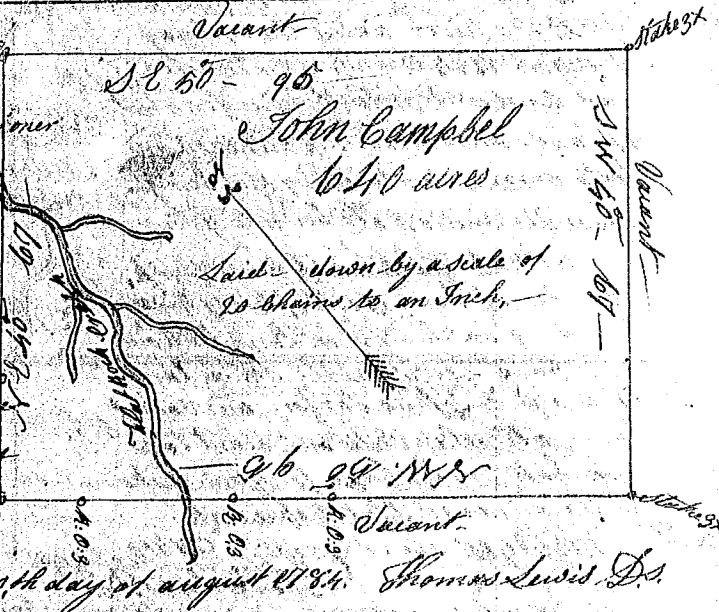


State of South Carolina

Pursuant to a warrant Directed under the hand and seal of John Thomas Esq: Commissioner of Locations for Ninety Six District North Side of Saluda River dated the 27<sup>th</sup> day of August 1784, I have admeasured and laid out unto John Campbell a tract of land containing six hundred and forty acres situate lying and being above the old Indian Boundary line on Maple Creek, a branch of Enoree River South side, bounded on all sides by Vacant Land and hath such shape form and Marks as the annexed Plat Represents, Surveyed the 30<sup>th</sup> day of August 1784.

Recorded 17<sup>th</sup> Sept. 1784.

Surveyed the 30<sup>th</sup> day of August 1784. Thomas Lewis D.



South Carolina

Pursuant to a warrant directed by John Thomas Esq: Commissioner of Locations for Ninety Six District North of Saluda River dated the 26<sup>th</sup> day of August 1784, I have admeasured and laid out unto Ann Cawsack a tract of land containing six hundred and forty acres situate lying and being above the Indian old boundary line on Clear Creek and the head branches of Golden Goose Creek both of Saluda River bounding on the S, on land laid out to John Hlyer, all other sides on Vacant Land and hath such shape and Marks as the above Plat Represents, Surveyed the 31<sup>st</sup> day of Aug. 1784

Recorded 17<sup>th</sup> Sept. 1784

Thomas Lewis D.

Del. Capt Gowen

