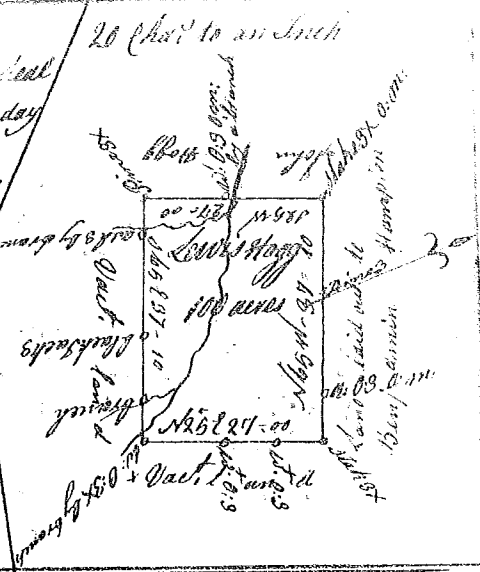


South Carolina

(114)

Pursuant to warrant directed under the hand and seal of John Breemar Esq. Deputy Surveyor genl. dated the 2<sup>d</sup> day february 1773, I have admeasured and laid out unto Lewis Hagg a plantation or tract of land containing one hundred acres in Barkey County in the fork between Broad River and Saluda on a small of Inoce River called Hagg's branch and bounded Northward by land laid out to John Hagg and A.S. by land laid out to Benjamin Hampton the other sides by Vacant land and hath such shape form and Marks as the annexed Plat Represents, Surveyed 25<sup>th</sup> day of february 1773

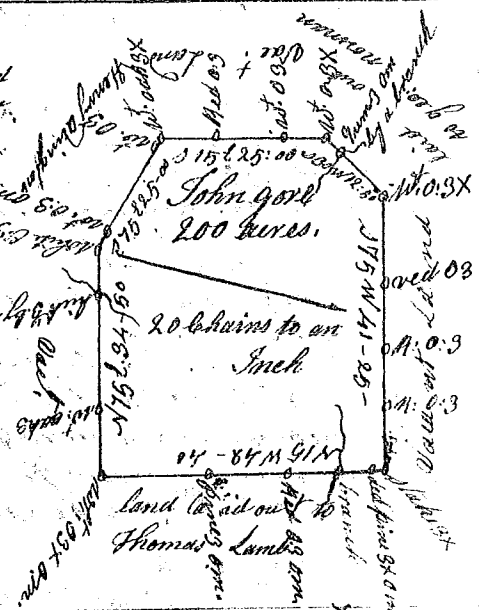
Recorded 2<sup>d</sup> Sept<sup>r</sup> 1774



South Carolina

Pursuant to a warrant directed under the hand and seal of John Breemar Esq. Surveyor genl. dated the 19<sup>th</sup> day of sept<sup>r</sup> 1772, I have admeasured and laid out unto John Gore a plantation or tract of land containing two hundred acres in Barkey County, in the fork between Broad River and Saluda on the draughts of the frenchmans creek and John's creek the waters of Inoce River and N.E. on land laid out to Henry Solington and S.E. on land laid out to George Norment and S.W. by land laid out to Thomas Lamb the other sides by Vacant land and hath such shape form and Marks as the annexed Plat Represents

Surveyed 10<sup>th</sup> Oct<sup>r</sup> 1772 Enoch Pearson D.S.  
Recorded 2<sup>d</sup> Sept<sup>r</sup> 1774



South Carolina

Pursuant to a warrant directed under the hand and seal of John Breemar Esq. deputy Surveyor genl. dated the 10<sup>th</sup> day of april 1773, I have admeasured and laid out unto Patrick March a plantation or tract of land containing one hundred and fifty acres in Barkey County situate lying and being on the north fork of Tyger River and bounded southerly by said river and Nwardly by John Ford's land and by John Ford's land and on all other sides by Vacant land, and hath such shape form and Marks as the annexed Plat Represents, Surveyed 29 sept<sup>r</sup> 1773, James Wofford

South Carolina

Pursuant to a Receipt from John Breemar Esq. Dep<sup>y</sup> Genl. dated the 2<sup>d</sup> day of March 1773, I have admeasured and laid out unto Job Colville a tract of one hundred acres of land situate in Craven County in the fork of Broad & Little Rivers on the waters of bush River Bounded W<sup>ly</sup> by land of John Caldwell & part by land of Lawrence Rigard, E<sup>ly</sup> by land of James Williams, & part by a County Survey Co. by Sophia Reed, and all other sides by Vacant land and hath such shape & marks as the annexed Plat Represents, Surveyed 11<sup>th</sup> March 1773

Recorded the 22<sup>d</sup> Sept<sup>r</sup> 1774

