

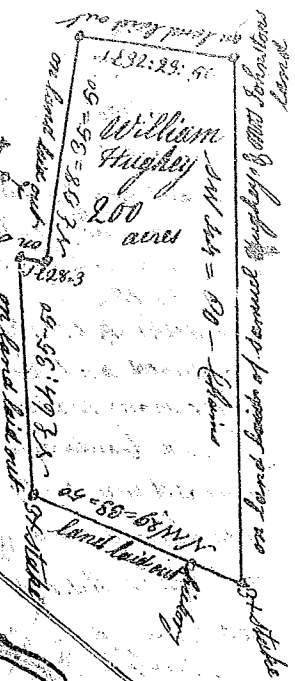
State of South Carolina

Pursuant to a warrant from John Thomas Esq^r Commissioner of Locations, I have admeasured and laid out unto William Hughey a tract of 200 acres of land situate in ninety six district on the waters of Tigar River bounding NW on land laid out NE on land laid out SE on Samuel outsons NE on land laid out SE on land laid out SW on land laid out to Saml. outson and 1777 Johnston and hath such shape and Marks as the annexed Plat represents

Surveyed 28th day of August 1784

Recorded 23^d day Sept^r 1784

David Hopkins D^s



State of South Carolina, Ninety six district East side of the ancient boundary line - Pursuant to a warrant from John Thomas Esq^r Commissioner of Location dated 9th day of August 1784 I have admeasured and laid out unto

John Farrow a tract of land containing five hundred Acres lying on the south shoying side of Enore River, bounded Non said River, NW by Nicholas Krowns land SE by Philemon Waters Esq^r, land NE by John Wallbrops land and hath such shape and Marks as the annexed plat represents

Surveyed 13th day of Aug^t 1784

Phil. Waters D^s

Recorded 23^d of Sept^r 1784



State of South Carolina

Pursuant to a warrant from John Thomas Esq^r Commissioner of Locations dated the 11th day of August 1784 I have admeasured and laid out unto George Taylor a tract of land containing six hundred and forty acres situate in Ninety six District East of the Old Indian town 2 days on both sides of Peoples Creek of Broad River Bound being an all sides on East land and hath such shape and marks as the annexed plat represents

Surveyed the 7th day Sept^r 1784

Recorded the 23^d Sept^r 1784

