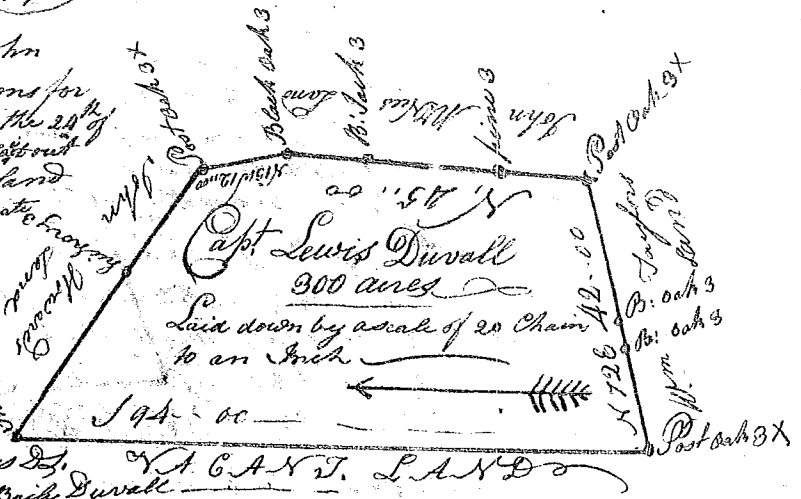


South Carolina

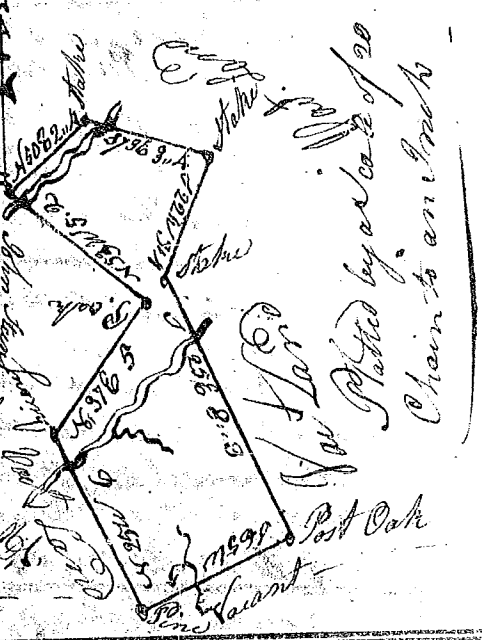
(170)

Pursuant to a warrant from John Thomas Esq. Commissioner of Locations for the district of N. Wald Saluda (Dated the 20th of Sept. 1784. I have admeasured and laid out unto Capt Lewis (Duvall) a tract of land containing three hundred acres situate below the ancient boundary on a branch of Dumars Creek in Ninety six District, Bounded N. by W. Taylor Et. on Vacant land and hath such shape and marks as the annexed plat represents. Surveyed this 27th Sept. 1784. Smith, Dooms Esq. Recorded the 1st day of Oct. 1784. Delivered to Bailly Duvall



State of South Carolina Ninety six District

Pursuant to a warrant to me Directed by John Thomas Esq. Commissioner of Location for the North side Saluda River, I have surveyed and laid out unto Isaac Chapman a tract of Land containing 100 acres, situate lying and being below the ancient boundary line on the waters of Sulley creek of Broad River in Ninety six District, bounded N. by John Steens land all other sides vacant, and has such shape and marks as the annexed plat represents. Surveyed the 28th September 1784. James Johnston Esq. Recorded the 4th day of Oct. 1784.



State of South Carolina

Pursuant to a warrant from John Thomas Esq. Commissioner of Locations dated the 2nd day of May 1784 - I have admeasured and laid out unto Samuel Westcott Esq. a tract of two hundred & twenty four acres of Land, situate in Ninety six District, on the branches of Rabans Creek, bounding N.E. on land laid out to Saml. Pison, and on other sides on vacant land & hath such shape and marks as the annexed plat represents. Surveyed this 24th day of July 1784. Wm. Robinson Esq. Recorded the 4th day of Oct. 1784.

