

State of South Carolina

1884

Pursuant to a warrant from John Thomas Esq. Commissioner of Locations for Ninety Six District North Side Saluda River dated the 12th August 1784 I have admeasured and laid out unto William Crow a tract of two hundred acres of Land situate in 96 District North Side Saluda below the ancient boundary on waters of Bush River Bounded N on land of John Houston and Thos Gary to the S.E. & S.W. on vacant land & N.W. on Thos Starks land and hath such shape and Mark as the annexed Plat Represents

Surveyed the 25th Oct. 1784

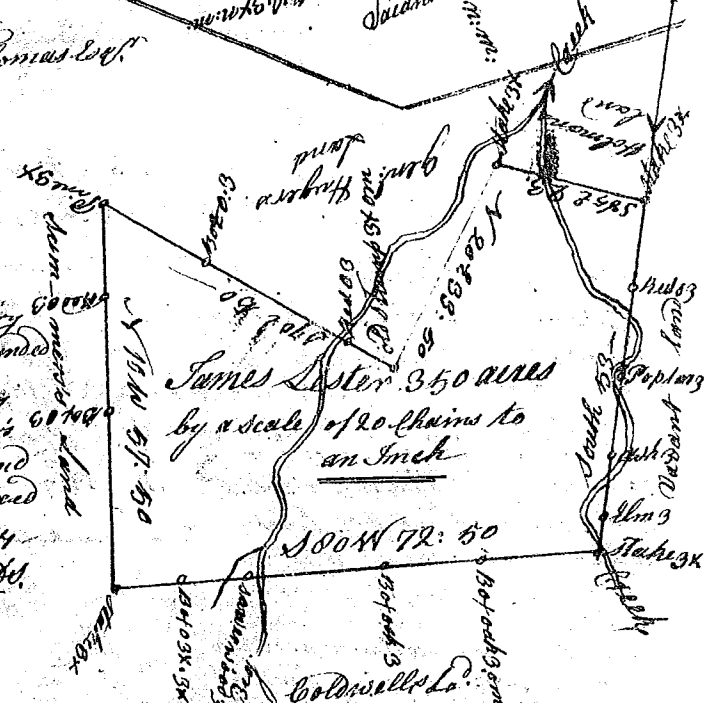
Recorded 30th Nov. 1784, — Phil. Waters D.S.



State of South Carolina

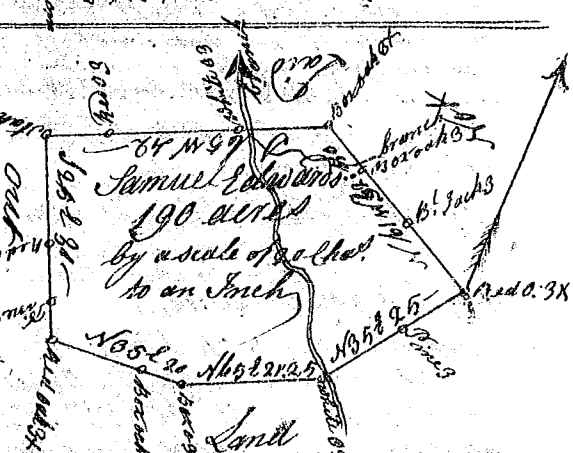
Pursuant to a warrant from John Thomas Esq. Commissioner of Locations for ninety six District No side Saluda River dated the 30th day of Aug. 1784 I have admeasured and laid out unto James Lester a tract of three hundred and fifty acres of Land situate in Ninety Six District No side of Saluda River below the ancient boundary on big-creek waters of saluda river, bounded on the N by Cadwells land, on the N.W. by Summers land on the S by gent. Wagers land and hath shape and Mark as the annexed Plat Represents, Surveyed 21 Sept. 1784

Phil. Waters D.S.
Recorded 30 Nov. 1784,



State of South Carolina

Pursuant to a warrant from John Thomas Esq. Commissioner of Locations for ninety six District No of Saluda River dated the 30th day of Aug. 1784 I have admeasured and laid out unto Samuel Edwards a tract of one hundred and twenty acres of Land situate in Ninety Six District on the North Side of Saluda River below the ancient boundary on Halls branch waters of Bush River bounded on all sides by vacant land, and hath such shape as the annexed Plat Represents Surveyed 22 day Sept. 1784 Phil. Waters D.S.
Recorded 30 Nov. 1784.



State of South Carolina

Pursuant to a warrant from John Thomas Esq. Commissioner of Locations in Ninety Six District No of Saluda dated 17th Aug. 1784 I have admeasured and laid out unto Harmon Dalis a tract of thirty acres of Land situate in Ninety Six District No of Saluda, below the ancient boundary on foot Creek waters of Bush River, bounded N.E. & N.W. by Coats land S.W. by Henry Pennons land & E. by John Wilkinson's land and hath such shape and Mark as the annexed Plat Represents Surveyed 24 Sept. 1784 Phil. Waters D.S.
Recorded 1st day Dec. 1784

