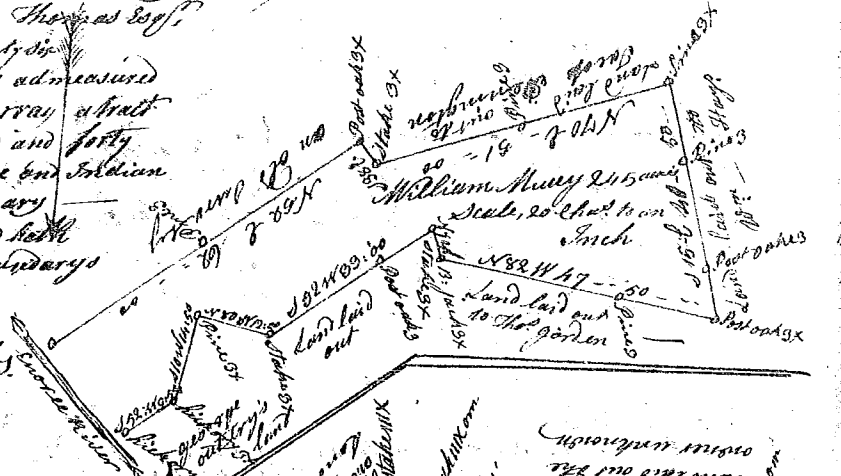
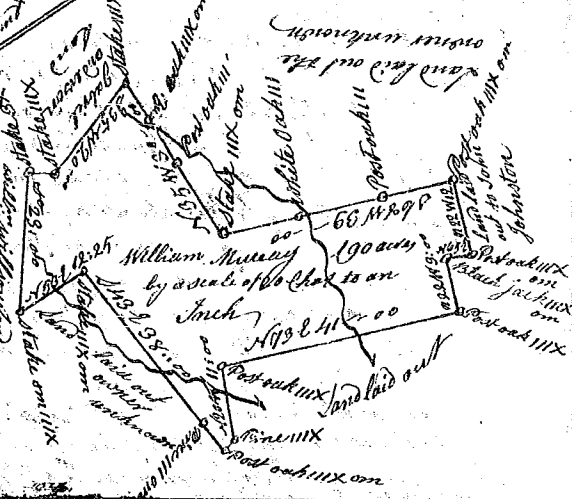


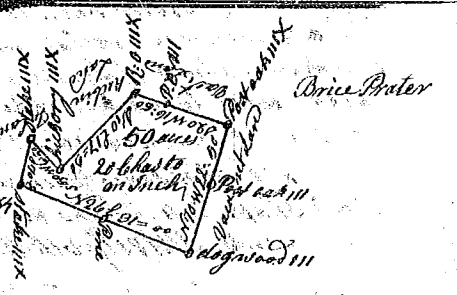
State of South Carolina, ————— 19
 Pursuant to a warrant from John Thomas Esq,
 Commissioner of Locations in Ninety six
 District No. Saluda River, I have admeasured
 and laid out unto William Murray a tract
 of Land containing two hundred and forty
 five acres, in the fork of Monroe and Indian
 Creek below the Indian boundary
 bounding NW by said River, and hath
 such other shape, Marks and boundaries
 as the annexed Plat represents,
 Surveyed 20th Oct. 1784
 by Robert Hanna D.S.
 Recorded 16. febr. 1785.
 Del. Mat. Doyon



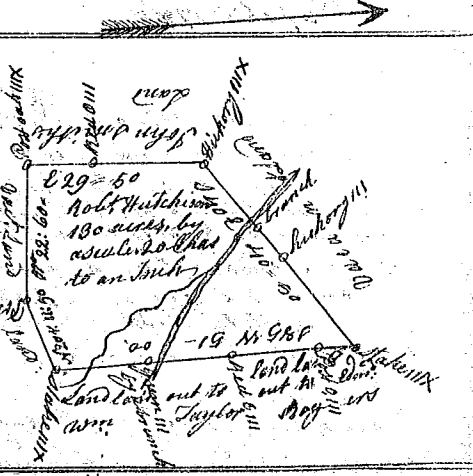
State of South Carolina, Pursuant to a warrant from
 John Thomas Esq, Commissioner of Locations in Ninety
 Six District No. Saluda River, I have admeasured and
 laid out unto William Murray Esq, a tract of Land
 containing one hundred and thirty acres on the branches
 of Kings Creek, below the Indian boundary in
 said District, and hath such shape, Marks & boundaries
 as the annexed Plat represents. Surveyed 17. 26. 1784
 Recorded 13th febr. 1785. Robert Hanna D.S.
 Del. Mat. Doyon



State of South Carolina, Pursuant to a warrant from John Thomas
 Esq, Commissioner of Locations in Ninety six District No. Saluda
 I have admeasured and laid out unto Orice Prater a tract of Land
 containing fifty acres on the south fork of Duncan's Creek
 below the Indian boundary, bounded SE & SW on Rubin
 Flanigan's Land, all other sides on Vacant Land, and hath such
 shape and Marks as the annexed Plat represents, Surveyed 2. Oct. 1784
 Recorded 4th febr. 1785. Robert Hanna D.S.



State of South Carolina, Pursuant to a warrant from John
 Thomas Esq, Commissioner of Locations in Ninety six District
 No. Saluda River, I have admeasured and laid out unto Robert
 Hutchison a tract of Land containing one hundred and thirty
 acres, on a branch of Duncan's Creek below the Indian boundary
 bounding N on John Smith's Land W on Land laid out Part to
 William Taylor and Part to Edmund Rogers, all other sides on
 Vacant Land and hath such shape and Marks as the annexed
 Plat represents, Surveyed the 22. Oct. 1784. Robert Hanna
 Recorded the 4th february 1785. D.S.



State of South Carolina, Pursuant to a warrant to a warrant
 from John Thomas Esq, Commissioner of Locations in Ninety
 Six District No. Saluda River, I have admeasured and laid
 out unto John Hunter a tract of Land containing one
 hundred acres on the branches of Duncan's Creek below
 the Indian boundary, bounding NE & NW on John Brown's
 Land SW on Vacant Land, SE on Robert Lunningham's Land,
 and hath such shape and Marks as the annexed Plat represents,
 Surveyed 29. Sept. 1784, by Robert Hanna D.S.
 Recorded 5th february 1785
 Del. Stephen Cates

