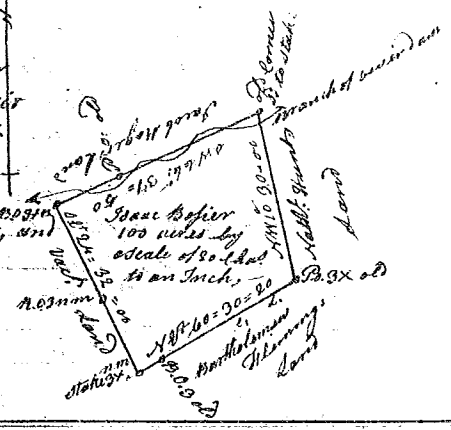


(37)

State of S<sup>c</sup> Carolina / Pursuant to a warrant from John Thomas Esq<sup>r</sup> Commissioner of Locations for ninety six district N<sup>o</sup> 1 of Saluda River dated 13th Oct<sup>r</sup> 1784, I have admeasured and laid out unto Isaac Bopier tract of one hundred acres of land situate in Ninety six district N<sup>o</sup> 1 Saluda River, below the ancient boundary on waters of Saluda River, bounded NE on Nathaniel Hammit's land, SE on Barth<sup>l</sup> Mlanney's land, SW on vacant land, NW on Jacob Rogers' land, and hath such shape and Marks as the above Plat represents Survey<sup>d</sup> the 24<sup>th</sup> Oct<sup>r</sup> 1784.

recorded the 17<sup>th</sup> Feby<sup>r</sup> 1785.



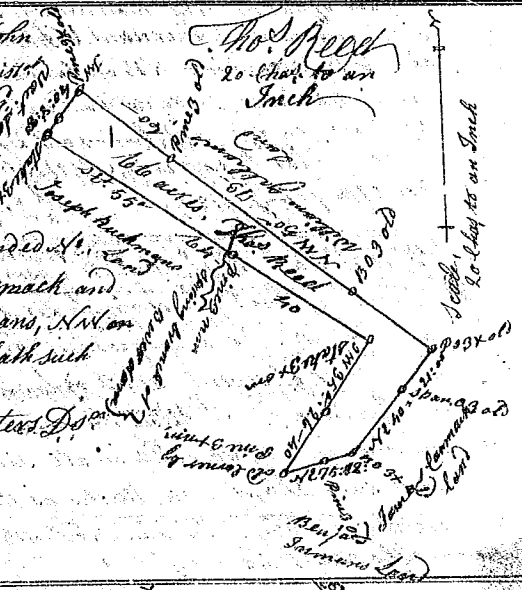
State of South Carolina / Pursuant to a warrant from John Thomas Esq<sup>r</sup> Commissioner of Locations for ninety six district N<sup>o</sup> 1 of Saluda River dated the 19<sup>th</sup> day of Nov<sup>r</sup> 1784, I have admeasured and laid out unto William Blair tract of one hundred and twenty acres of land, situate in Ninety six district on the North side Saluda River, below the line, on waters of Bush River, bounded NW by groovers land, E by Melow's land, all other sides by vacant land, and hath such shape and Marks as the annexed Plat represents, Survey<sup>d</sup> the 23<sup>rd</sup> Nov<sup>r</sup> 1784.

recorded the 15<sup>th</sup> Feby<sup>r</sup> 1785. by Phil<sup>l</sup> Waters Esq<sup>r</sup>



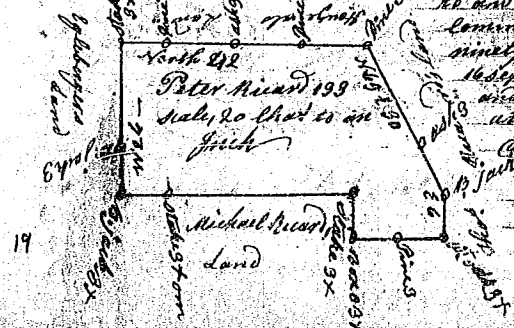
State of S<sup>c</sup> Carolina / Pursuant to a warrant from John Thomas Esq<sup>r</sup> Commissioner of Locations for ninety six district N<sup>o</sup> 1 of Saluda River, dated 30 Oct<sup>r</sup> 1784, I have admeasured and laid out unto Thomas Reed tract of sixty six acres of land, situate in Ninety six district on the North side Saluda River below the ancient boundary on waters of Beaverdam Branch of Saluda River, bounded NE on Land of William Gilliam, SE on land of James Carrack and Part on Benj<sup>n</sup> Sturmons, SW on land of Joseph Richmans, NW on land Part on Nejer Ball by part vacant land, and hath such shape and Marks as the above Plat represents, Survey<sup>d</sup> the 15<sup>th</sup> Nov<sup>r</sup> 1784. Phil<sup>l</sup> Waters Esq<sup>r</sup>

recorded the 17<sup>th</sup> Feby<sup>r</sup> 1785.



State of S<sup>c</sup> Carolina / Pursuant to a warrant from John Thomas Commissioner of Locations for ninety six district N<sup>o</sup> 1 of Saluda River, dated 16<sup>th</sup> Sept<sup>r</sup> 1784, I have admeasured and laid out unto Peter Ricard tract of one hundred and eighty six acres of land, situate in ninety six district N<sup>o</sup> 1 Saluda River, below the ancient boundary, on waters of Cannon's Creek, bounded South by Michael Ricard's land, Part W by Tho<sup>s</sup> Ricard's land, East by Edwards land, all other sides by vacant land, and hath such shape and Marks as the annexed Plat represents, Survey<sup>d</sup> the 18<sup>th</sup> Oct<sup>r</sup> 1784. Phil<sup>l</sup> Waters Esq<sup>r</sup>

recorded 17<sup>th</sup> Feby<sup>r</sup> 1785



State of S<sup>c</sup> Carolina / Pursuant to a warrant from John Thomas Commissioner of Locations for ninety six district N<sup>o</sup> 1 of Saluda River, dated 16<sup>th</sup> Sept<sup>r</sup> 1784, I have admeasured and laid out unto Peter Ricard tract of one hundred and thirty three acres of land, in the district aforesaid, below the ancient boundary, on waters of Cannon's Creek, bounded NE by Tho<sup>s</sup> Ricard's land, West by Houffels land, S by Epleberger's land, E by Michael Ricard's land, and hath such shape and Marks as the annexed Plat represents, Survey<sup>d</sup> the 18<sup>th</sup> Oct<sup>r</sup> 1784.

recorded 17<sup>th</sup> Feby<sup>r</sup> 1785. Phil<sup>l</sup> Waters Esq<sup>r</sup>