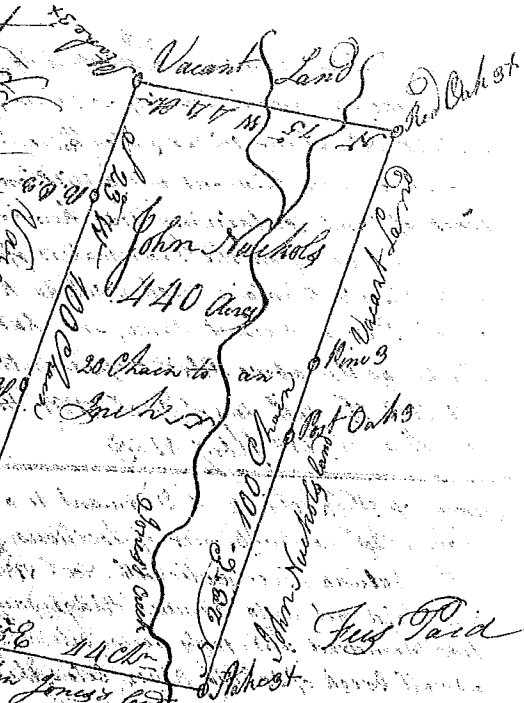


State of South Carolina 96<sup>113</sup> District  
 on the East side of the ancient Boundary line  
 Pursuant to a warrant from John Thomas Esq.  
 Commissioner of Locations Dated July 1<sup>st</sup> 1785. I have  
 Admeasured & laid out unto John Nichols a Tract  
 of land Containing four thousand and forty  
 acres, lying on both sides of Jones Creek a branch  
 of Frenchty, bounded to the South West by  
 Stephen Jones's land and to the East by  
 The said John Nichols's land, all other  
 sides Vacant land & hath such shape  
 and marks as the annexed plat Represents  
 Surveyed the 9<sup>th</sup> July 1785.



Witness my hand & the seal of the said District  
 Recorded 22 Feb<sup>r</sup> 1785. J. Thomas Esq.  
 Commissioner of Locations  
 J. P. Jones Esq.

State of South Carolina Pursuant to a warrant from John Thomas  
 Esq. Commissioner of Locations Dated 19<sup>th</sup> day of Nov<sup>r</sup> 1785. I have admeasured  
 & laid out unto John McNeil a Tract of land containing one thousand  
 acres, situate in Ninety six District East of the old Boundary  
 on mile Creek of South fork of Parrot River bounding to  
 the South on land laid out to Daniel Henderson and A. S. S.  
 to the ancient Boundary to a corner of John Goussard  
 and all other sides on Vacant land, and hath such shape  
 and marks as the annexed plat Represents  
 Surveyed the 29<sup>th</sup> July 1785. J. Thomas Esq.  
 Recorded the 29<sup>th</sup> July 1785. J. Thomas Esq.  
 Commissioner of Locations  
 J. P. Jones Esq.



State of South Carolina Pursuant to a warrant from John Thomas  
 Commissioner of Locations for Ninety six District & Saluda River  
 I have admeasured and laid out unto Benjamin Elliot a tract of  
 land of two hundred acres situate in 96 District  
 on the N. E. side of French Rivers bounding on the  
 S. B. on land laid out to George Motters on the  
 East on the ancient old line, & on Vacant land NW  
 on land laid out to by Parrot River & hath such  
 shape & marks as the annexed plat Represents  
 Surveyed the 3<sup>rd</sup> Dec<sup>r</sup> 1784. J. Thomas Esq.  
 Recorded the 28<sup>th</sup> February 1785.



State of S. Carolina Pursuant to a warrant from John  
 Thomas Esq. Commissioner of Locations, Dated the  
 20<sup>th</sup> day of Sept<sup>r</sup> 1784, I have admeasured and  
 laid out unto John Hall, situate in 96 District  
 on the N. side of Needy River, on a branch thereof  
 bounded on all sides on Vacant Land, and  
 hath such shape and marks as the annexed  
 Plat Represents, merely 20 out 1784.  
 Recorded the 23 febr<sup>y</sup> 1785.

