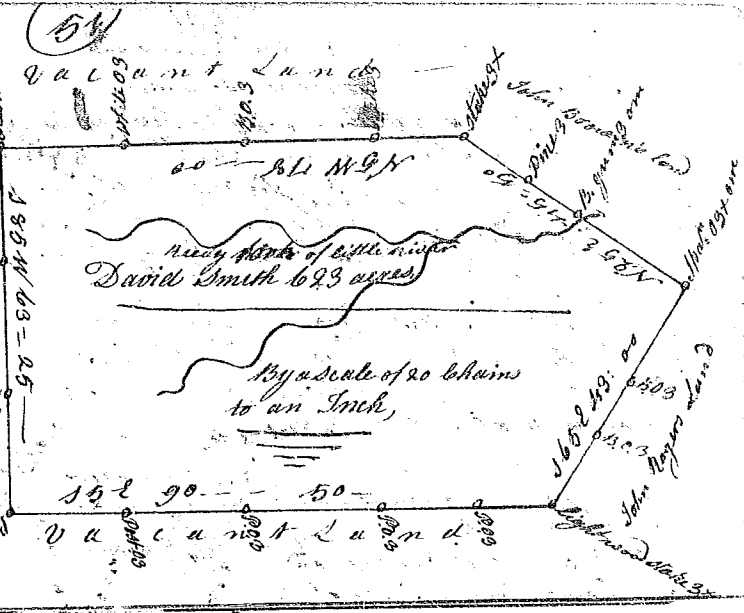


State of S^c Carolina / Pursuant to a warrant from John Thomas Commissioner of Locations dated the 25th day of Oct^r 1784. I have measured and laid out unto David Smith a tract of Land containing Six Hundred and Twenty three acres situate in the District on a branch of Little River call^d the Needy fork SW on John Rogers's land SE on John Brown's land, all other sides on vacant Land and hath such shape and Marks as the annexed Plat represents. Survey^d 17th Jan^y 1785. Jonathan Downes D^s Recorded the 25th febr^y 1785.



State of S^c Carolina / Pursuant to a warrant from John Thomas Esq^r Commissioner of Locations dated the 24th Sept^r 1784. I have admeasured and laid out unto John Chapman a tract of Land containing Two hundred and Sixty acres, situate in the District on Needy river above the ancient boundary line bounding SW on Richard Wynn's land SW on Stephen Ford's land SW on Michael Purdell's land on said river, all other sides on vacant Land, and hath such shape and Marks as the above Plat represents. Survey^d the 2^d day Oct^r 1784, by Jonathan Downes D^s. Recorded 25th febr^y 1785.



State of S^c Carolina / Pursuant to a warrant from John Thomas Esq^r Commissioner of Locations dated the 2^d day of Oct^r 1784. I have admeasured and laid out unto Thomas Cargil a tract of Land containing Two hundred and forty five acres, situate in the District on a branch of Little River call^d North's cove bounded as above specified, below the ancient boundary line, and hath such shape and Marks as the annexed Plat represents. Survey^d 28th day Oct^r 1784. Recorded 25th february 1785. Jonathan Downes D^s.



State of S^c Carolina / Pursuant to warrant from John Thomas Commissioner of Locations dated the 6th Oct^r 1784. I have admeasured and laid out unto Thomas Cargil a tract of Two hundred and three acres of Land situate in the District N^e Saluda, below the ancient boundary line on a branch of Little River waters of Saluda river bounding N on Cornelius Cargil, SW on Henry Isabel SW on Landy walther and John Cargil and hath such shape and Marks as the annexed Plat represents. Survey^d 28th day Oct^r 1784. Recorded the 25th febr^y 1785.

