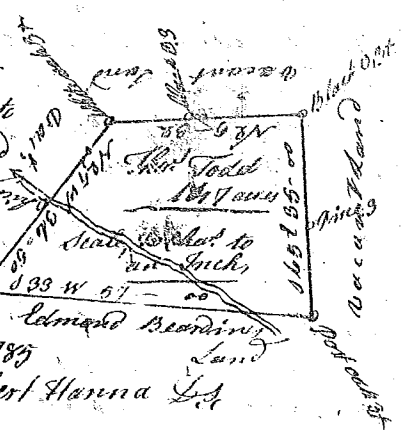
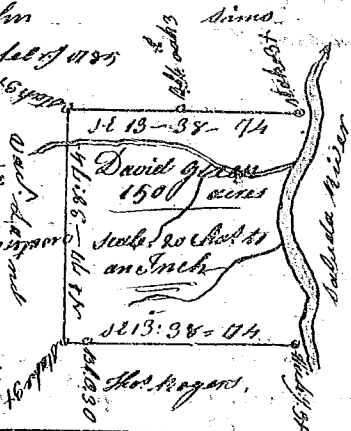


(64)  
 State of S<sup>c</sup> Carolina / Pursuant to a warrant from John Thomas Commissioner of Locations in Ninety six district  
 as Saluda River, I have admeasured and laid out unto  
 Thomas Todd tract of Land containing one hundred  
 and forty seven acres, on a branch of Tyguminer  
 S<sup>e</sup> side, below the Indian boundary, bounded SW  
 on land laid out to Edmond Beading, and all other  
 sides on Vacant Land, and hath such shape and  
 Marks as the above Plot Represents, Survey by  
 Recorded the 7<sup>th</sup> March 1785, Del. Edw. Hooker By Robert Hanna Esq



State of S<sup>c</sup> Carolina / Pursuant to a warrant from John Thomas Commissioner, dated 5<sup>th</sup> Oct<sup>r</sup> 1784, and renew<sup>d</sup> 15 Feb<sup>r</sup> of 1785  
 I have admeasured and laid out unto David Green tract of  
 Land containing one hundred and fifty acres, below the  
 ancient boundary situate in Ninety six district, on the N<sup>e</sup> side  
 Saluda River, bounding SW on Thomas Rogers NE on Simons  
 all other sides on Vacant Land, and hath such shape  
 and Marks as the annexed Plot Represents,  
 Survey<sup>d</sup> the 18<sup>th</sup> April 1785.  
 Recorded the 7<sup>th</sup> March 1785, Del. Edw. Hooker By John Martin Esq



State of S<sup>c</sup> Carolina / 96<sup>th</sup> district East of the ancient boundary line  
 Pursuant to a warrant from John Thomas Commissioner  
 of Location dated 8<sup>th</sup> day Nov<sup>r</sup> 1784, I have Admeasured  
 and Laid out unto David Neel tract of Land  
 containing two hundred and fifty seven  
 acres situate lying & being on the N<sup>e</sup>  
 side of Coarec River bounded  
 to the West by Michael Waldrops Land  
 all other sides Vacant & hath such shape  
 & marks as the annex<sup>d</sup> plot Represents  
 Survey<sup>d</sup> the 6<sup>th</sup> Jan<sup>y</sup> 1785 By Andrew Thomson Esq  
 Recorded 7<sup>th</sup> March 1785 Del. to D. Neel



State of S<sup>c</sup> Carolina / Pursuant to a  
 Warrant from John Thomas Esq<sup>r</sup> Com<sup>r</sup> Locations dated  
 the 20<sup>th</sup> Nov<sup>r</sup> 1784, I have admeasured & laid out unto  
 Samuel Fowles a Tract of Sixty four acres of Land situate  
 in Ninety six District West of Ancient Boundary, on the South  
 fork of Parrot River, bounding on all sides on Vacant Land  
 and hath such shape and marks as the above plot  
 Represents, Survey<sup>d</sup> this 19<sup>th</sup> day of January 1785  
 Recorded the 7<sup>th</sup> March 1785 By Wm. Brinson Esq

