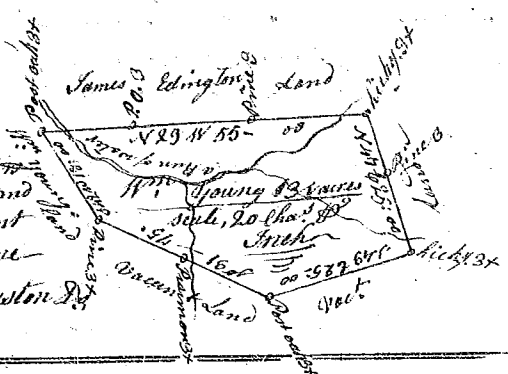


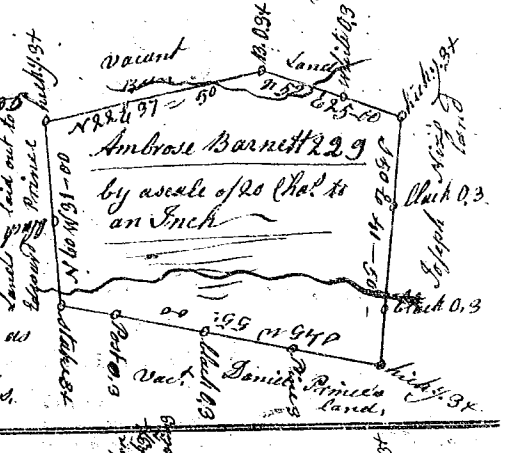
State of South Carolina

Pursuant to a warrant from John Thomas Esq. Commissioner of locations in 96 District N<sup>o</sup> Saluda, I have admeasured and laid out unto William Young a tract of one hundred and thirty one acres of land, situate in 96 District on the waters of Enoree, bounding S and SW on James Edington's land S on William Young's land, all other sides on vacant land, and hath such shape and Marks as the above Plat represents, Survey, 14<sup>th</sup> June 1785, by W. Gaston D<sup>o</sup>.  
Recorded 21<sup>st</sup> Sept<sup>r</sup> 1785.

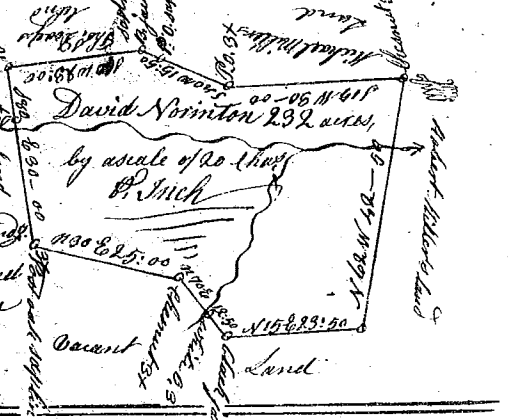


State of S<sup>c</sup> Carolina

Pursuant to a warrant from John Thomas Esq. Commissioner of locations N<sup>o</sup> Saluda dated 18 June 1785 I have admeasured and laid out unto Ambrose Barnett a tract of Two hundred and Twenty nine acres of land, situate in Ninety six District on the waters of Tygar River, bounding N<sup>e</sup> on Joseph Vix's land, S<sup>e</sup> on Daniel Princes land, W on land laid out to Edward Princes land, all other sides on vacant land, and hath such shape and Marks as the above Plat represents, Survey, 18 June 1785, by W. Gaston D<sup>o</sup>.  
Recorded 21<sup>st</sup> Sept<sup>r</sup> 1785.

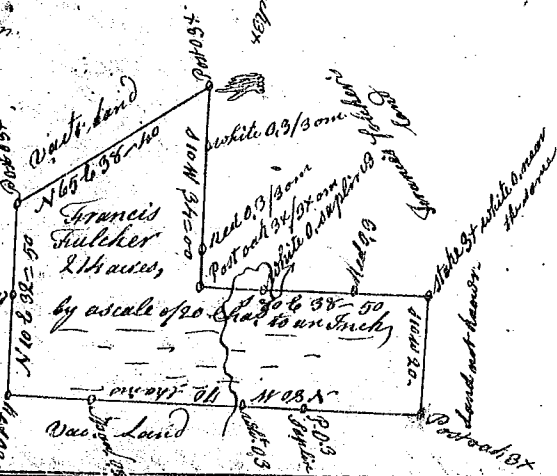


State of South Carolina Pursuant to a warrant from John Thomas Esq. Commissioner of locations dated this day any<sup>t</sup> 1785 I have admeasured and laid out unto David Norrington a tract of Two hundred & Thirty two acres of land, situate in Ninety six District N<sup>o</sup> side Saluda West of the old boundary on both sides of a branch of Musk Creek of S<sup>c</sup> Tygar river, and hath such shape, Marks, buttings and boundaries as the above Plat represents, Survey, the 2<sup>o</sup> Aug<sup>t</sup> 1785, by J. Whitner D<sup>o</sup>.  
Recorded 21<sup>st</sup> Sept<sup>r</sup> 1785.



State of S<sup>c</sup> Carolina

Pursuant to a warrant from John Thomas Esq. Commissioner of locations Dated 23<sup>rd</sup> Aug<sup>t</sup> 1785, I have admeasured and laid out unto Francis Fuler a tract of two hundred and fourteen acres of land, situate in Ninety six District above the S<sup>d</sup> boundary on a branch of Enoree river, and hath such shape, Marks, buttings and boundaries as the above Plat represents, Survey, 31<sup>st</sup> Aug<sup>t</sup> 1785, by J. Whitner D<sup>o</sup>.  
Recorded 21<sup>st</sup> Sept<sup>r</sup> 1785.



Pursuant to a warrant from John Thomas Esq. Commissioner of locations for Ninety six District N<sup>o</sup> Saluda, I have admeasured and laid out unto William Simpson, a tract of land containing two hundred acres, situate on both sides of Foster's Mill Creek a branch of fair forest, bounded on all sides on vac<sup>t</sup> Land, and hath such shape and Marks as the above Plat represents, Survey, 20<sup>th</sup> July 1785, by Z. Bulloch D<sup>o</sup>.  
Recorded the 21<sup>st</sup> Sept<sup>r</sup> 1785.

