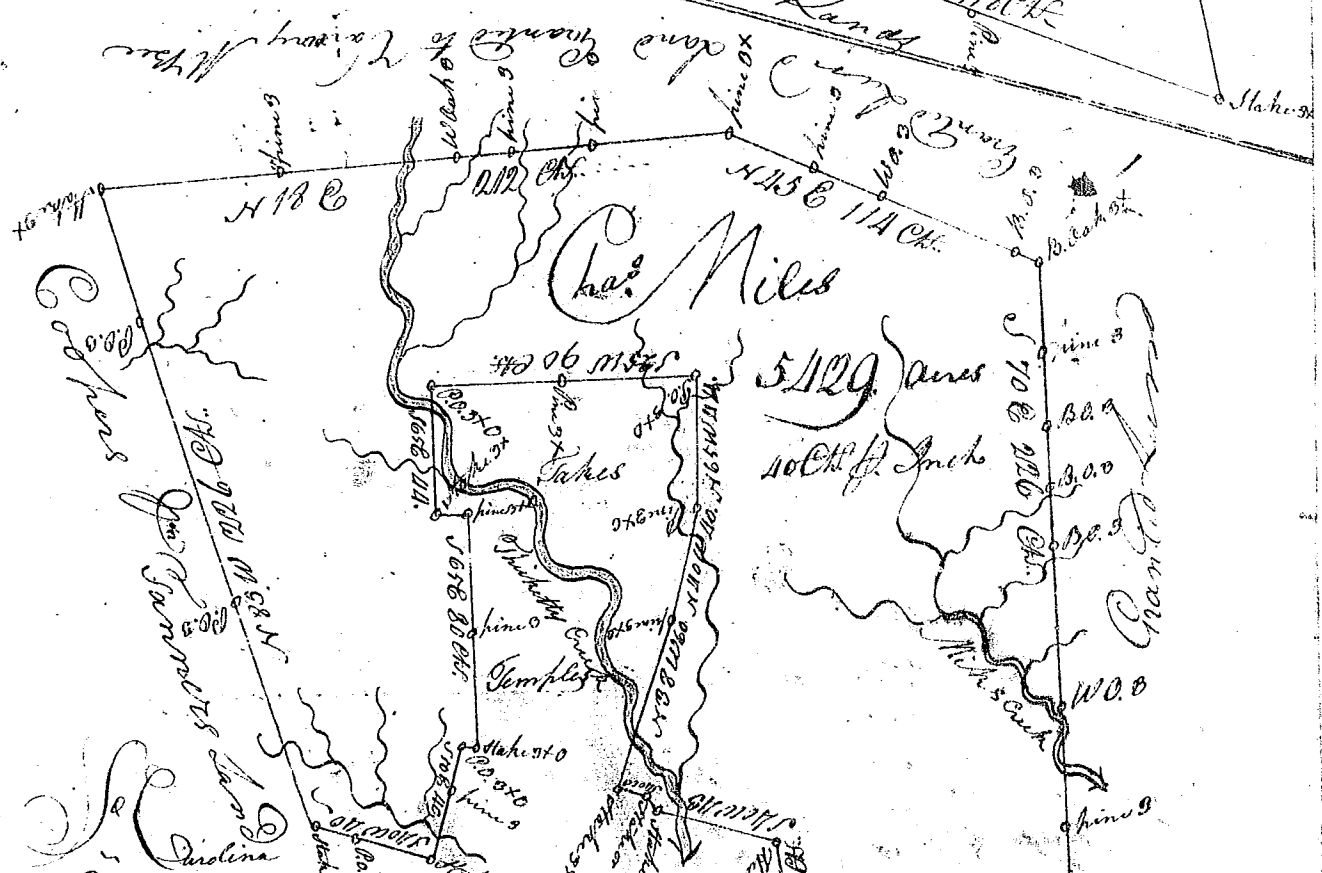
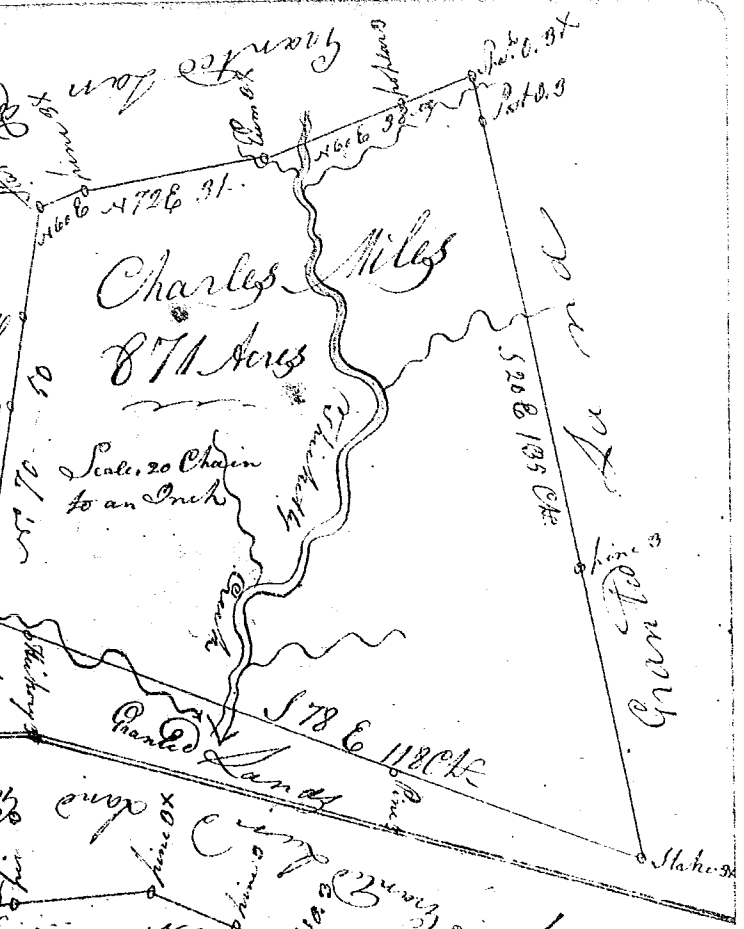


Pursuant to a warrant from John Thomas Esq. Dated the 1st day of Dec^r 1785. I have admeasured & laid out unto Charles Miles a Tract of Eight hundred & Seventy one acres of land below the ancient bound^{ary} & lying situated in Ninety six District N. of Saluda River and on the right bank of Broad River. Bounded on all sides with Granted land and hath such shape & marks as the above sheet represents

Survey'd this 8th January 1786

John Martin Esq. Received this 2nd Feb^r 1786 Deliv'd to Tho^s Gordon



Pursuant to a warrant from John Thomas Esq. I have admeasured & laid out unto Charles Miles a Tract of 5129 Acres of land situated in 96 District on Cherokee Creek & Miles Creek Waters of Broad River. Bounded W. on land Granted to Wm. Byrd Esq. N. on Granted Land East on McClearys land & Coopers & Tanners & Con. Tates Temples & Arnolds and hath such shape & marks as the above sheet represents

Survey'd this 17th Dec^r 1785 by James Martin Esq.

Received this 2nd Feb^r 1786 Deliv'd Tho^s Gordon