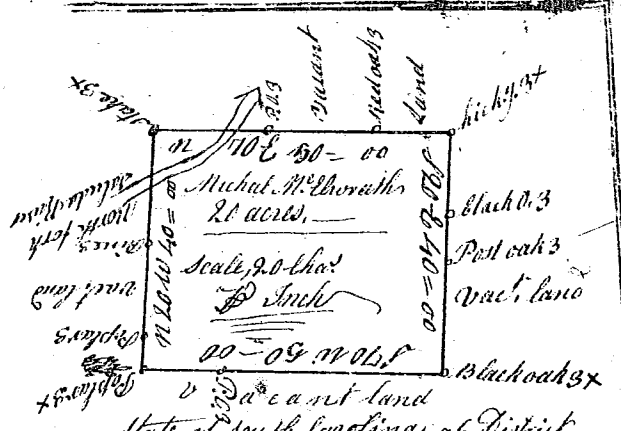
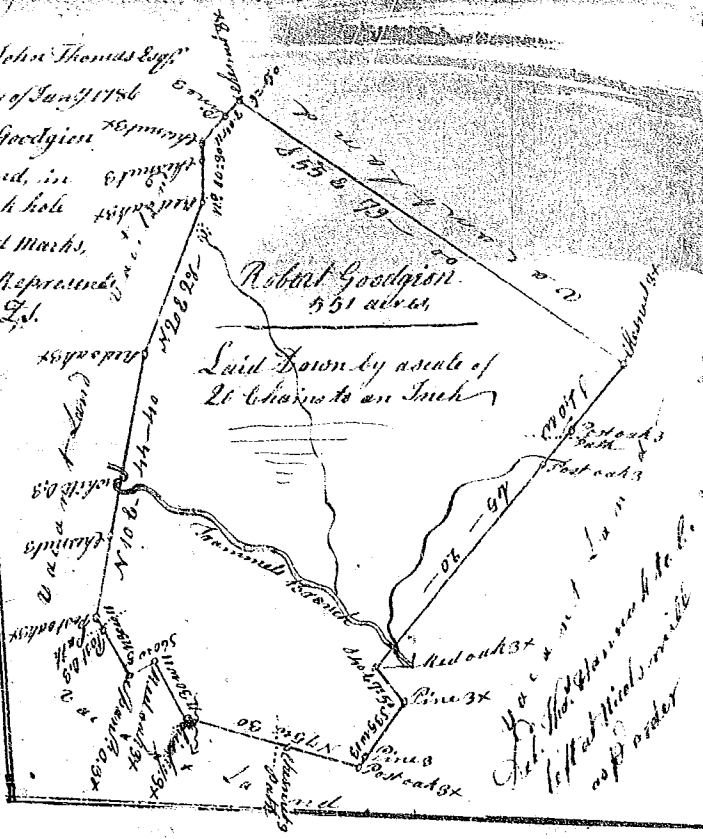


Pursuant to a warrant from John Thomas Esq<sup>r</sup> Commissioner of locations Dated the 24<sup>th</sup> day of Juny 1786 I have admeasured and laid out unto Robert Goodgion a tract of five hundred & fifty one acres of land, in Ninety six District, Trammels branch of sink hole fork, Tigger River, and hath such shape, and Marks, Boundings & boundaries as the annexed Plat represents, Survey<sup>d</sup> the 23<sup>th</sup> Jan<sup>y</sup> 1786 W<sup>m</sup> Benson Esq<sup>r</sup>. Recorded 9<sup>th</sup> March 1786.

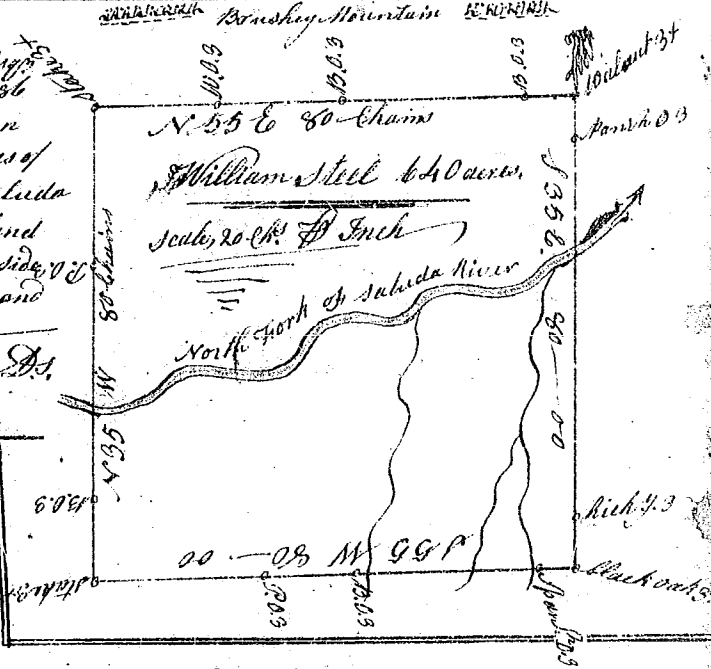


State of South Carolina, 96 District

Pursuant to a warrant from John Thomas Esq<sup>r</sup> Commissioner of locations 21<sup>st</sup> Dec<sup>r</sup> 1785, I have admeasured and laid out unto Michael M. Chorath a tract of two hundred acres of land on the North fork of Saluda River, bounded on all sides by vacant land, and hath shape, form and Marks as the above Plat represents, Survey<sup>d</sup> 21<sup>st</sup> Dec<sup>r</sup> 1785, Recorded 16<sup>th</sup> March 1786, Andrew Thomson Esq<sup>r</sup>.

State of South Carolina, 96 District

Pursuant to a warrant from John Thomas Esq<sup>r</sup> Commissioner of locations dated 20<sup>th</sup> Juny 1786 I have admeasured and laid out unto William Steel a tract of six hundred and forty acres of land, on both sides of the North fork of Saluda River, bounded on all sides by vacant land near the Brushy Mountain on the East side of said Mountain, and hath such shape and Mark as the annexed Plat represents, Survey<sup>d</sup> 20<sup>th</sup> Juny 1786 Andrew Thomson Esq<sup>r</sup>. Recorded 16<sup>th</sup> March 1786.



State of South Carolina Pursuant to a warrant from John Thomas Esq<sup>r</sup> Commissioner of locations Dated 23<sup>rd</sup> Juny 1786, I have admeasured and laid out unto Abraham Bradley a tract of sixty nine acres of land, in ninety six District on a branch of Saluda River & branch of Trammels creek of the aforesaid River, and hath such shape & marks, Boundings and Boundings as the above Plat represents, Survey<sup>d</sup> 23<sup>rd</sup> Juny 1786, Recorded 16<sup>th</sup> March 1786, by W<sup>m</sup> Benson Esq<sup>r</sup>.