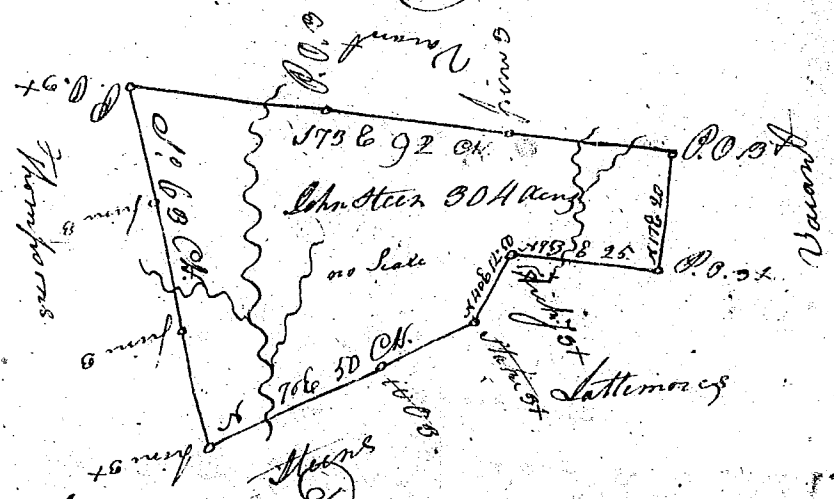


(376)



South Carolina Pursuant to a warrant from  
 John Thomas Esq. Dated the 12<sup>th</sup> Jan<sup>y</sup> 1780. I have ad-  
 vanced out unto John Steen a tract of 30 Acres of  
 Land. Situate in 30 Acres tract below the ancient  
 Boundary on the N<sup>e</sup> side the pretty Creek waters of broad  
 River. Bounded S<sup>e</sup> by Lattermore's Land & Steen's Land 16<sup>th</sup>  
 by John Thompson all other sides by Vacant Land  
 & hath such Sh<sup>al</sup>: & marks as the above tract whereunto  
 Survey'd this 7<sup>th</sup> Feb<sup>y</sup> 1780 J<sup>o</sup> Martin Esq  
 Recorded this 29<sup>th</sup> March 1780 in page 376.