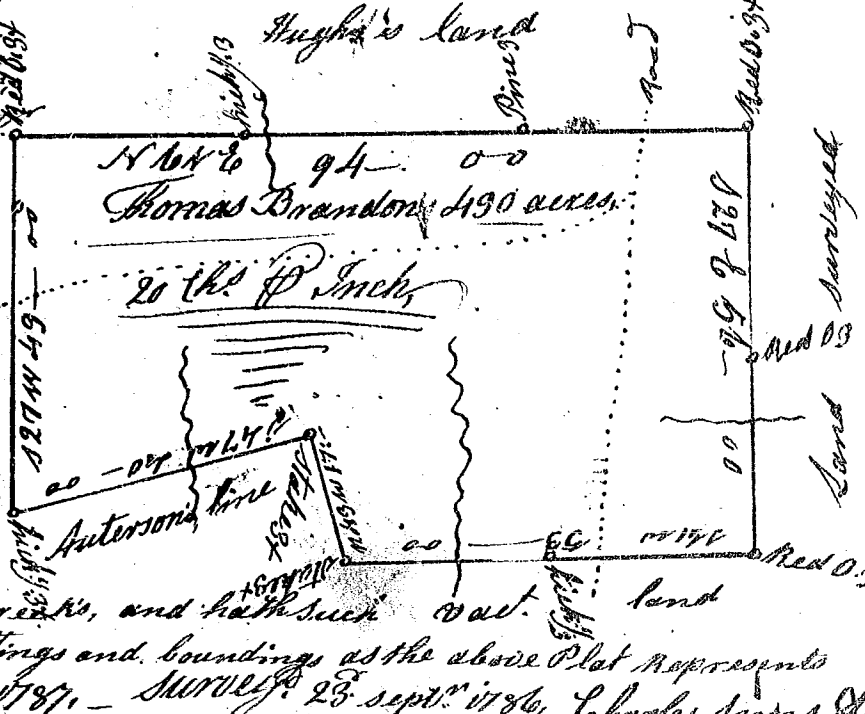


Carolina. Pursuant to a <sup>1784</sup>  
 Warrant from John Thomas Esq. Com.  
 Comm. Locations Dated the 24<sup>th</sup> Nov.  
 1786. I have admeasured & laid out  
 unto W<sup>m</sup> Humphreys a tract of  
 150 acres of land situated lying  
 & being on the N. side of Enoree  
 River bounded N. by S. River  
 S. by W<sup>m</sup> Gunter & E. by ~~the~~ Humphreys  
 all other sides by Vac. land & hath such  
 form marks as the above Plat represents  
 Surveyed the 28<sup>th</sup> Nov. 1786 James Wofford Esq.  
 Recorded 19<sup>th</sup> January 1787



State of S<sup>c</sup> Carolina  
 Pursuant to a warrant  
 from John Thomas Esq.  
 Commissioner of  
 locations dated 21<sup>st</sup>  
 Sept. 1786. I have  
 admeasured and  
 laid out unto Tho-  
 mas Brandon  
 Esq. a tract of 190  
 acres of land in  
 ninety six District.  
 S<sup>o</sup> side broad river,  
 on the branches of  
 Broad's & Timber creeks, and hath such  
 shape, Marks, settings and boundings as the above Plat represents  
 Recorded 19<sup>th</sup> Jan<sup>y</sup> 1787. - Surveyed 23<sup>rd</sup> Sept. 1786, Charles Sims Esq.



State of S<sup>c</sup> Carolina Pursuant to a warrant  
 from John Thomas Esq. Com. of locations Dated  
 24<sup>th</sup> Oct. 1786. I have admeasured, and laid  
 out unto James Nix a tract of one hundred  
 and fifty acres of land, on the bridge fork  
 of Gilders creek, waters of Enoree river,  
 bounded, bounded S<sup>o</sup> by Jacob Davis land,  
 E. by Old lines, all other sides Vac. land and  
 hath such shape & marks as the above Plat  
 represents. Surveyed 30<sup>th</sup> Oct. 1786.  
 Recorded 15<sup>th</sup> Jan<sup>y</sup> 1787, by Jas. Wofford Esq.  
 Jas. Jacob Davis

