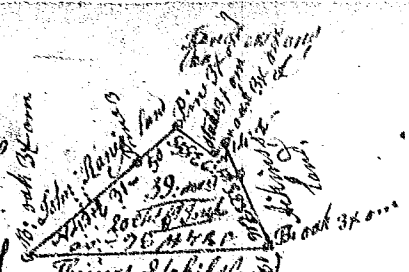
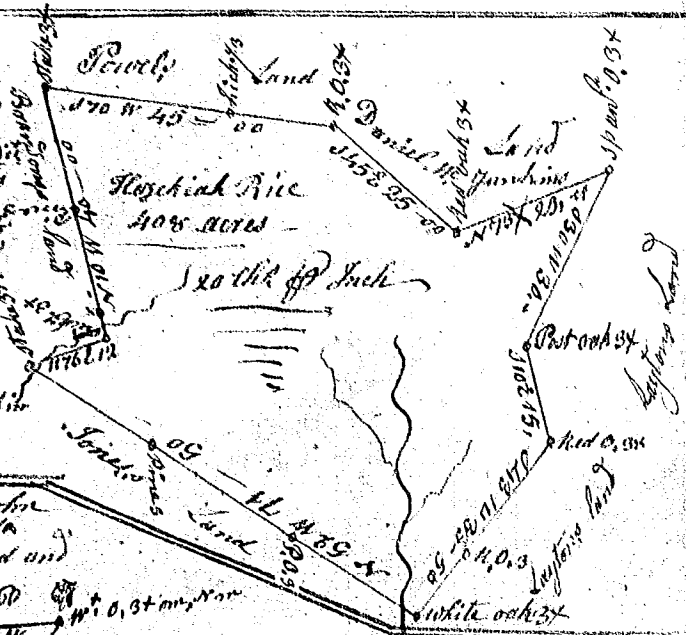


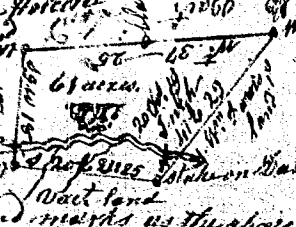
(1)
 Pursuant to a warrant from
 John Thomas Esq^r Commissioner of
 Location for the district of Sandy Six No^o of
 Saluda bearing date the 18th of Dec^r 1787
 I have admeasured and laid out unto
 Wadsworth Dushin a tract of 89 acres of
 land in Laurens county on a small branch of
 a creek on John Rainey's land. S. E. &
 waters of Little River be divided S. E. on John Rainey's land. S. E. &
 N. E. on Henderson's land S. E. on Atkins land and S. W. on
 Thomas Edgill's land. and hath such shape and marks as the
 above plat represents surveyed this 14th day of Dec^r 1787
 Recorded 26th Feb^r 1788 Del^y self
 William Hunt Esq^r D: S



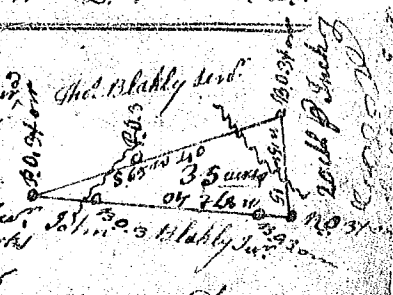
State of S^c Carolina Pursuant to a
 Warrant from John Thomas Esq^r Com^r of
 Location, I have laid out unto Hezekiah
 Rice, a tract of 408 acres of land in 40th
 on the south side of broad river; waters
 of fairforest creek, and hath such shape,
 form, marks, buttings & boundings as the
 above Plat represents.
 Surveyed 15th Dec^r 1787
 Recorded 8th March 1788. Del^y Chas^r Sims Esq^r
 Del^y D. W. Jordan



S^c Carolina Pursuant to a warrant from John
 Thomas Com^r of loc^s of district of Saluda
 Dated 13th Dec^r 1787, I have admeasured and
 laid out unto Tomchin Holsey
 a tract of 61 acres of land
 on both sides of
 Kourons fork of
 Sugar river in
 Greenville County
 and hath such form and marks as the above Plat represents
 Surveyed 14th Sept^r 1787
 Recorded 8th March 1788. Del^y self
 Wm^m G. Thomas, Esq^r



South Carolina Pursuant to a warrant from John Thomas
 Com^r of Location Dated 11th Dec^r 1787, I have admeasured
 and laid out unto William Hecks a tract of 35 acres of
 land, on the waters of North's Creek of Saluda river -
 bounding S. E. on Tho^s Blakely, W. on Thomas Blakely, S.
 N. on John Blakely, and hath such shape and marks
 as the above Plat represents, Surveyed 7th Jan^r 1788
 Recorded 10th March 1788, Del^y self -
 John Rodgers Esq^r



S^c Carolina Pursuant to a warrant from John Thomas Esq^r
 Com^r of Location Dated 28th Aug^t 1787, I have admeasured &
 laid out unto William Phelps a tract of 97 acres of land
 Greenville County on both sides of a branch of the Middle fork
 of Saluda, bounding on all sides on vacant lands & hath
 hath such shape & marks as the above Plat represents
 Surveyed 11th Oct^r 1787
 Recorded 26th March 1788. Del^y self
 George Salmer Esq^r

