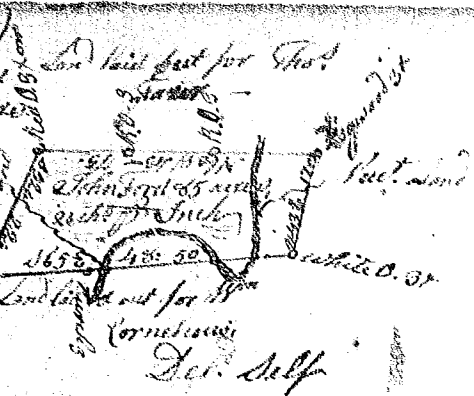
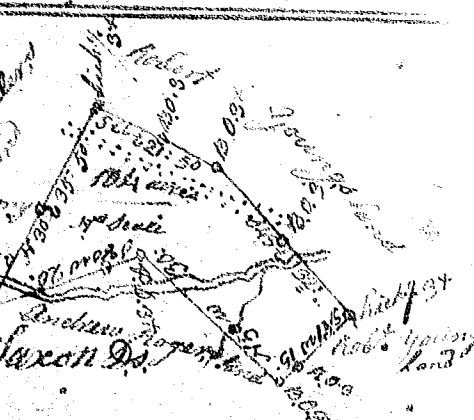


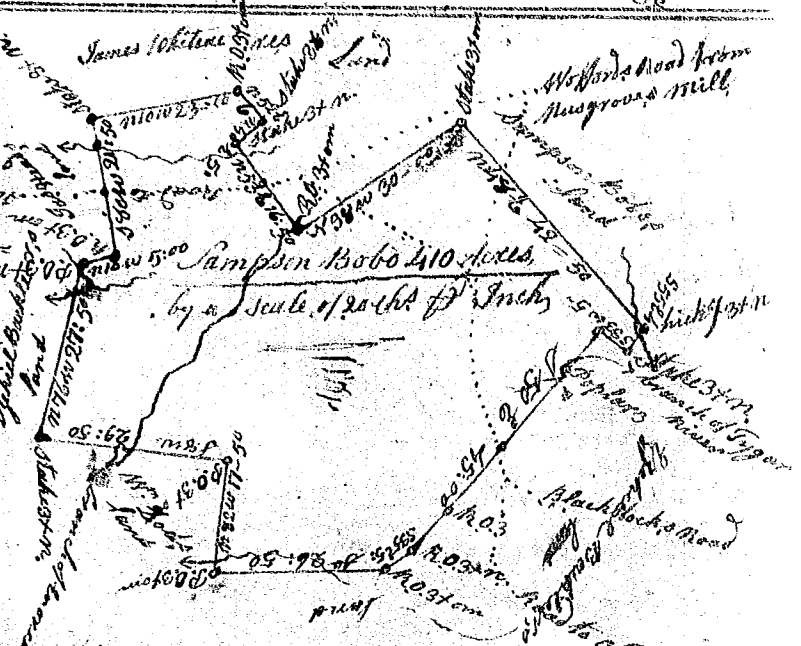
State of S<sup>c</sup> Carolina, Pursuant to a warrant from John Thomas Com<sup>r</sup> of loc<sup>s</sup> Dated 8<sup>th</sup> Aug. 1788 I have admeasured & laid out unto John Fox about of 5000<sup>00</sup> of land in Greenville County, on both sides of the fork of Saluda River. Bounded by a line running S 78 E. by land survey for William Tomlinson by a line running N 60 W by land laid out for John Fox all other sides by vacant land, and hath such shape & marks as the above Plat represents. -ents, Survey 9<sup>th</sup> Aug. 1788, Recorded 17<sup>th</sup> Sept. 1788, George Johnson D<sup>r</sup>



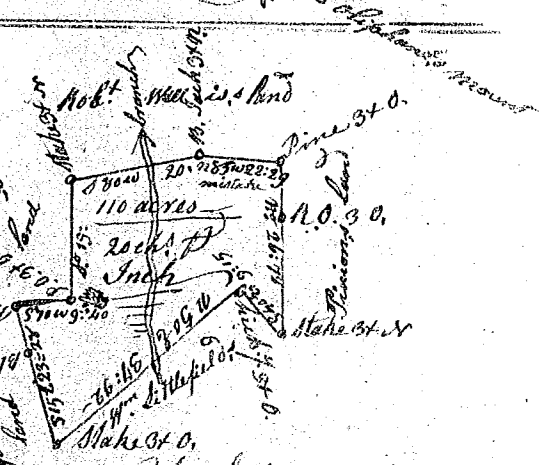
South Carolina Pursuant to a warrant from Laurens County John Thomas Com<sup>r</sup> of loc<sup>s</sup> Dated 19<sup>th</sup> Sept. 1788, I have admeasured and laid out unto Obadiah Estige a tract of one hundred & four acres of land in Laurens County, on a branch of head dam Creek waters of Saluda river, & hath such shape, marks, butting & boundings as the above Plat represents. -ents, Survey 20<sup>th</sup> Sept. 1788, Sam<sup>l</sup> Saxon D<sup>r</sup>, Recorded 20<sup>th</sup> Sept. 1788, Del. Self



State of S<sup>c</sup> Carolina, Pursuant to a warrant from John Thomas Com<sup>r</sup> of loc<sup>s</sup> No Saluda river, I have admeasured and laid out unto Sampson Bobo a tract of four hundred and ten acres of land, on the widening bridge between Enoka & Tigger rivers in Spartanburg County, having such shape, marks, buttings & boundings as the above Plat represents, Survey 10<sup>th</sup> Sept. 1788, Rob<sup>t</sup> Hanna D<sup>r</sup>, Recorded 20<sup>th</sup> Sept. 1788.



S<sup>c</sup> Carolina, Ninety Six District Pursuant to a warrant from John Thomas Com<sup>r</sup> of loc<sup>s</sup> Dated 29<sup>th</sup> July 1788, I have admeasured & laid out unto Amos Martin a tract of one hundred & ten acres of land in Union County N<sup>o</sup> Saluda, on a small branch of Sugar Creek of Tigger river, bounded S & E. by land granted to John Little, N.W. & N.E. by Robert Walides, land W. by Pivions land, S.E. & N.E. by William Littlefield's land, S.W. by Thomas Blasingames land, and hath such form and marks as the above Plat represents,



Survey 31<sup>st</sup> July 1788, Sam<sup>l</sup> Lancaster D<sup>r</sup>, Recorded 23<sup>rd</sup> Sept. 1788.