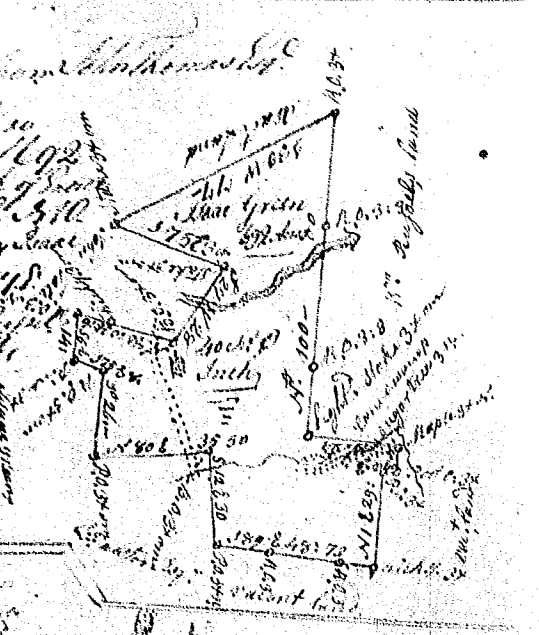


I, Carolina, Pursuant to a warrant from the  
 Honourable Com<sup>rs</sup> of the Court of Sessions, dated the 1<sup>st</sup> July 1788, I  
 have administered and laid out unto George  
 Luther a tract of one hundred acres of land  
 on both sides of Two Mile Creek a branch of the  
 river of said side, bounded N<sup>W</sup> by land granted to  
 Isaac Hendricks, E<sup>W</sup> by land granted to  
 W. by said Luther's land, and both such shape  
 and marks as the above plat represents.  
 Recorded 11<sup>th</sup> Oct<sup>r</sup> 1788. Del<sup>d</sup> W. Thompson

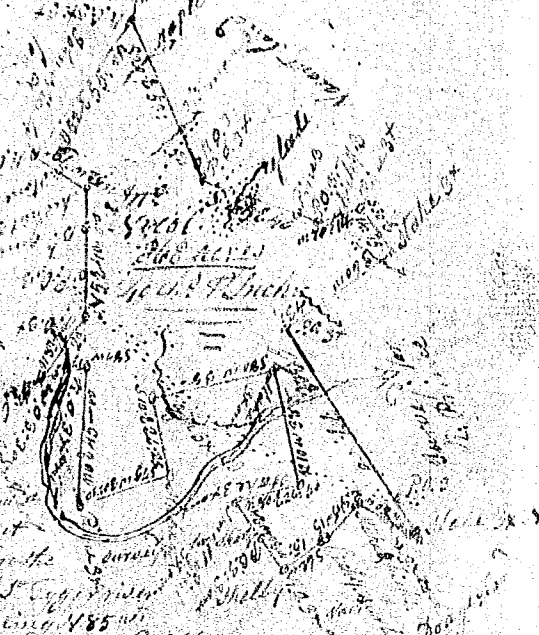


South Carolina

Pursuant to a warrant from the Honourable  
 Com<sup>rs</sup> of the Court of Sessions, dated the 1<sup>st</sup> July 1788, I  
 have administered and laid out unto Isaac Green  
 a tract of land in the Parish of St. James  
 in the County of York, bounded N<sup>W</sup> by land  
 granted to Isaac Green, E<sup>W</sup> by land granted to  
 Isaac Green, S<sup>W</sup> by land granted to Isaac Green,  
 and S<sup>W</sup> by vacant land. The above plat  
 represents the shape and marks of the above  
 tract of land, and such from the  
 above plat represents.  
 Recorded 11<sup>th</sup> Oct<sup>r</sup> 1788. Del<sup>d</sup> W. Thompson



Pursuant to a warrant from the  
 Honourable Com<sup>rs</sup> of the Court of Sessions, dated the 1<sup>st</sup> July 1788, I  
 have administered and laid out unto John  
 a tract of land in the Parish of St. James  
 in the County of York, bounded N<sup>W</sup> by land  
 granted to John, E<sup>W</sup> by land granted to John,  
 and S<sup>W</sup> by vacant land. The above plat  
 represents the shape and marks of the above  
 tract of land, and such from the  
 above plat represents.  
 Recorded 11<sup>th</sup> Oct<sup>r</sup> 1788. Del<sup>d</sup> W. Thompson



Pursuant to a warrant from the  
 Honourable Com<sup>rs</sup> of the Court of Sessions, dated the 1<sup>st</sup> July 1788, I  
 have administered and laid out unto John  
 a tract of land in the Parish of St. James  
 in the County of York, bounded N<sup>W</sup> by land  
 granted to John, E<sup>W</sup> by land granted to John,  
 and S<sup>W</sup> by vacant land. The above plat  
 represents the shape and marks of the above  
 tract of land, and such from the  
 above plat represents.  
 Recorded 11<sup>th</sup> Oct<sup>r</sup> 1788. Del<sup>d</sup> W. Thompson

