

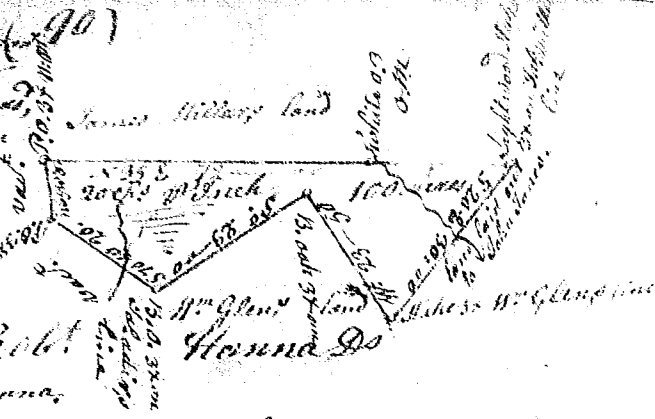
State of S^c Carolina

Pursuant to a warrant

from John Thomas Esq. Comissioneer of locations & sales, I have admeasured and laid out unto David Graham a tract of one hundred acres of land on the branches of Duncan's Creek in Laurens County, having such shape, marks, buttings & boundings as the above Plat represents.

Survey 2. Oct. 1789. Robt.

Recorded 7th Oct. 1789, Fed. N. Hanna.

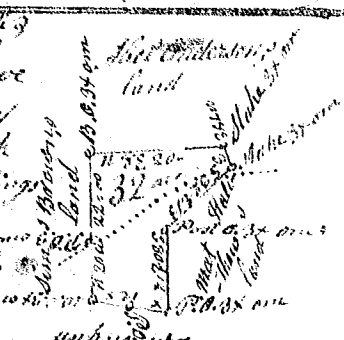


State of S^c Carolina Pursuant to a warrant

from John Thomas Esq. Com^r of locations & sales, I have admeasured and laid out unto Sims Brown a tract of thirty five acres of land on the waters of King Creek in Newberry County, having such shape, marks, buttings and boundings as the above Plat represents.

Survey 14th Oct. 1789, Job. Hanna Esq.

Recorded 9th Oct. 1789, Fed. N. Hanna



State of S^c Carolina Pursuant to a warrant from

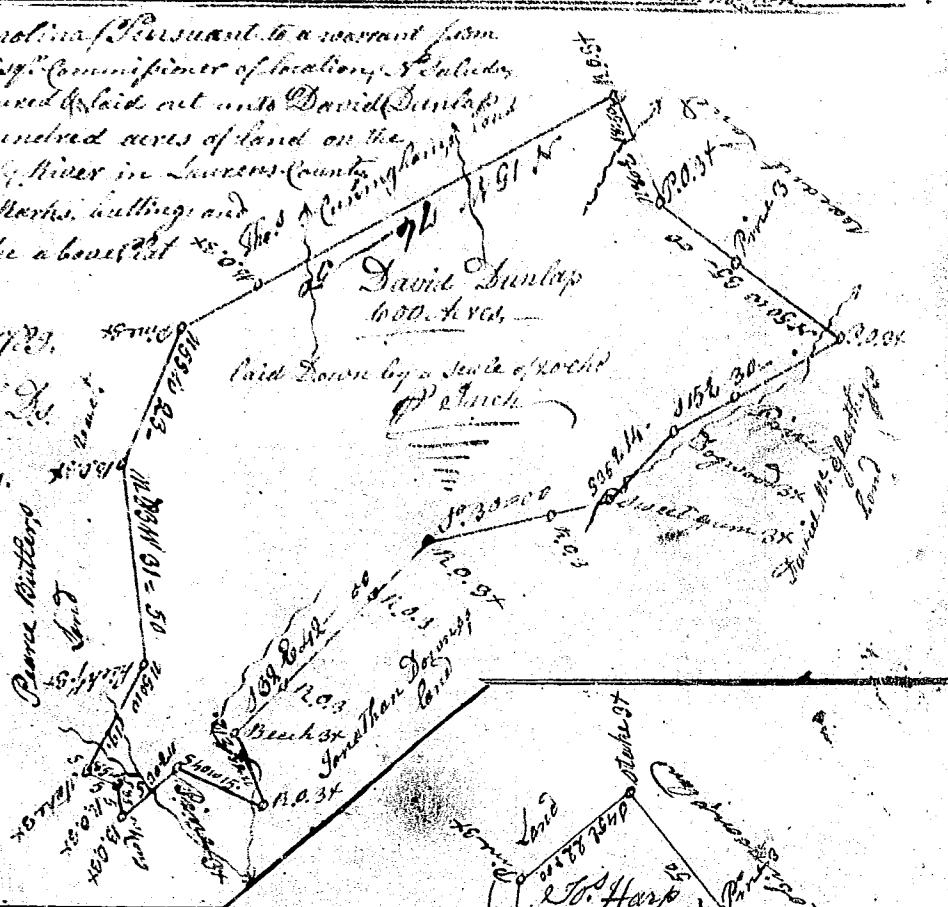
John Thomas Esq. Comissioneer of locations & sales, I have admeasured & laid out unto David Dunlap a tract of six hundred acres of land on the branches of Rocky River in Laurens County, having such marks, buttings and boundings as the above Plat represents.

Survey 7th Aug. 1789.

Robt. Hanna Esq.

Recorded 9th Oct. 1789.

Fed. N. Hanna



State of S^c Carolina Pursuant to a warrant from John Thomas Com^r of locations dated 15th June 1789, I have admeasured and laid out unto Joseph Harp a tract of 125 acres of land, in Newberry County, on waters of Big Saluda River, and hath such shape, marks, buttings & boundings as the above Plat represents.

Survey 18th June 1789

Recorded 20th Oct. 1789.

Jo. Wright Esq.

Fed. John Goodwin

