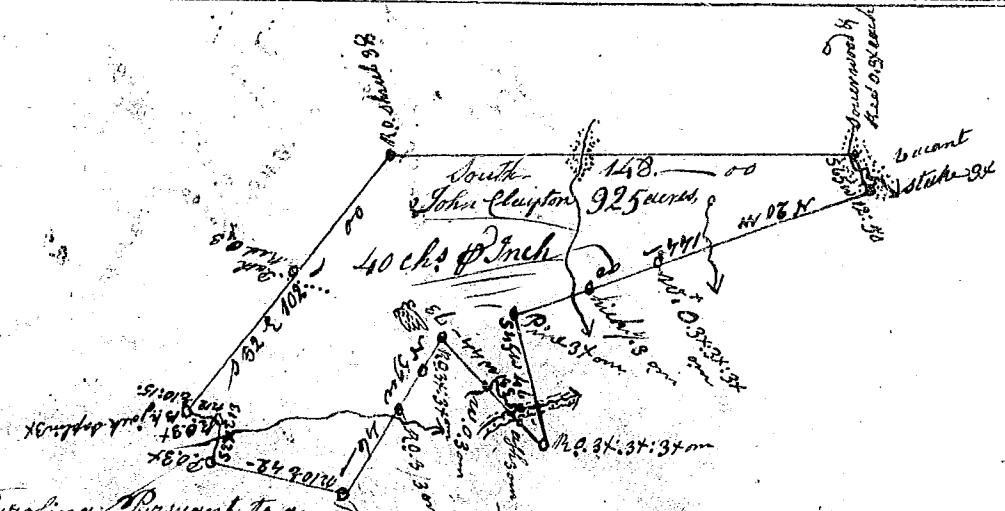
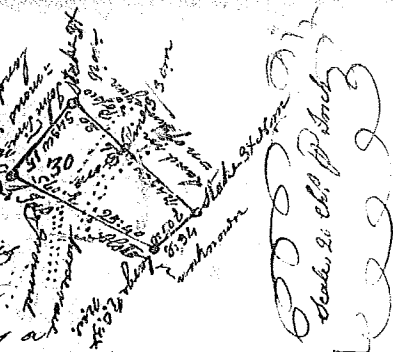


State of S. Carolina

Pursuant to a warrant from John Thomas Esq. Commissioner of Locations in 6th District, S. Saluda, dated the 23rd day of April 1790. I have measured and laid out unto Jo. Langston, James Ritchey, & John Nicoll, a tract of thirty acres of land, situate in the districts aforesaid, in view of the the present Court-house of Greenville, bounding by a line running 60th by Lemuel James Allston Esq. land, N. 50th E. by land not known, N. 45th W. by land occupied by Cunnamagari, S. 43th W. by John Commins land, and hath such such shape, form & marks as the above plat represents on the Surveyed the 23rd day of April 1790
 Recorded the 30th Sept. 1790 — Wm. D. Thomas Esq.
 Dea. M. Nicol.



S. Carolina Pursuant to a warrant from John Thomas Esq. Commissioner of Locations Dated 4th Jan'y 1790 I have admeasured and laid out unto John Clayton a tract of 92.5 acres of land in said district on the Middle fork of Sugar river in Greenville County butting and bounding as above specified, and hath such form and marks as the above Plat represents, Surveyed 8th Jan'y 1790.
 Recorded 30th Sept. 1790 — Wm. D. Thomas, Esq.

S. Carolina Pursuant to a warrant from John Thomas Comr. of Locations dated 11th Jan'y 1790, I have admeasured and laid out unto John Clayton a tract of 30 acres of land in 6th District, on the ridge road between the middle fork of Sugar river and Colkenberys beaverdam of S. river; bounded by a line running N. by Thomas Vandors land, S 78th E. by widows Trammels land S 50th E. by Thomas Wadsworths land, W. by Lardes Vernons land, And hath such form shape & marks as the above Plat represents, — Surveyed 8th Jan'y 1790 — Wm. D. Thomas, Esq.
 Recorded 30th Sept. 1790

