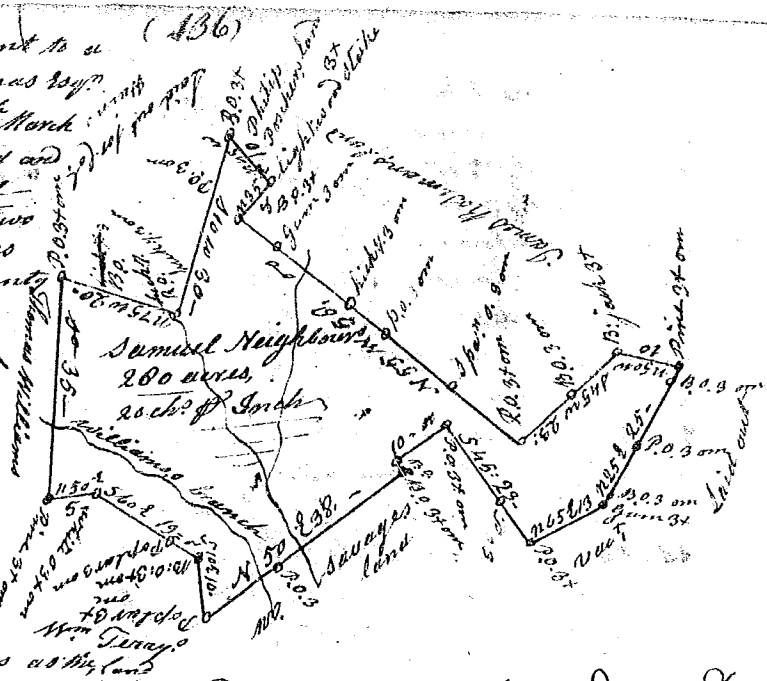


State of <sup>so</sup> Carolina Pursuant to a warrant from John Thomas Esq<sup>r</sup> Com<sup>r</sup> of loc<sup>o</sup> Dated 19<sup>th</sup> March 1791, I have admeasured and laid out unto Samuel Neighbour's tract of two hundred & eighty acres of land, in Curriers county on a branch of Saluda call<sup>d</sup> William's branch bounding W. by Thomas Williamson's land and Col<sup>l</sup> Hays's N.E. or Sgt Rodmans & Philip Poshers land S & S.W. on William Terry's & M<sup>r</sup> Savage's land all other sides vacant, and hath such shape form and marks as the above Plat represents, -

Surveyed 26<sup>th</sup> April 1791, John<sup>th</sup> Dours Esq<sup>r</sup>  
Recorded 9<sup>th</sup> May 1791, Del. self.



State of <sup>so</sup> Carolina Pursuant to a warrant from John Thomas Esq<sup>r</sup> Com<sup>r</sup> of loc<sup>o</sup> N Saluda Dated 2<sup>th</sup> day April 1791 I have admeasured and laid out unto Jeremiah Cooper's tract of five hundred and forty one acres of land in Newberly county 96 District on the head creek water of Inoce river, bounded by a line running N 3/4 W by land survey for John Garrett, thence N.E. & N.W. by W<sup>m</sup> Largent's thence N.W. & N.E. by unknown land, thence S.E. by John Lindsey, thence S.W. S.W. N.E. N.W. by James Shiner, thence N.E. S.E. S.W. S.E. & N.E. & S.W. by John Lindsey, S.W. by Isaac Ivends, land, and hath such shape and marks buttons and boundaries as the above Plat represents, -

Surveyed 4<sup>th</sup> May 1791  
Jeremiah Cooper Esq<sup>r</sup>  
Recorded 9<sup>th</sup> May 1791 - Del. Luv. Pearson



State of <sup>so</sup> Carolina Pursuant to a warrant from John Thomas Esq<sup>r</sup> Com<sup>r</sup> of loc<sup>o</sup> in 96 District N Saluda, dated 9<sup>th</sup> April 1791, I have admeasured and laid out unto John Stone's tract of four hundred and forty two acres of land, in said District on the branches of head & dam creek water of Inoce river, running S.W. Wiggins's land S.E. with W<sup>m</sup> Thomas's land, S.W. with W<sup>m</sup> Bramble's land, N.W. with Thos Wiggins's land, N.E. with 10<sup>th</sup> Wiggins's and Joseph Aleson's lands, all other sides vacant and hath such shape & marks as the above Plat represents Surveyed 18<sup>th</sup> May 1791

John Stone 442 acres  
20 ch<sup>s</sup> of inch  
Surveyed 18<sup>th</sup> May 1791  
Del. Wofford Esq<sup>r</sup> pat.  
Recorded 13<sup>th</sup> May 1791. Del. self.

