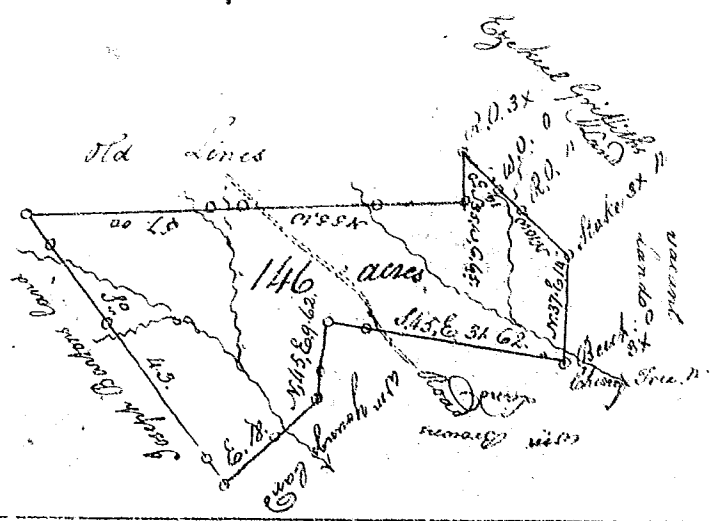


Laid down by a scale of 20 chains to an Inch.



State of S<sup>c</sup> Carolina

Pursuant to a Warrant from John Thomas Esq<sup>r</sup> Com<sup>r</sup> of Locations N<sup>o</sup> Saluda River Bearing date the 26<sup>th</sup> March 1792 I have admeasured and laid out unto Hudson Barry a Tract of One hundred and forty Six acres of Land in the Branches of Derbens Creek, Waters of Enoree River, Running S. with Joseph Barkens line E. & N. with W<sup>m</sup> Youngs lines, S. E. with Wm Browns line N. E. & N. W. on vacant land & Ezekiel Griffiths line, and the lines of an old survey, and hath such Stake & Marks as the above plat Represents Surveyed the 22<sup>d</sup> February 1792

James Wofford Esq<sup>r</sup>

S<sup>c</sup> Carolina Pursuant to a Warrant from John Thomas Esq<sup>r</sup> Com<sup>r</sup> of Locations in Ninety Six Dist<sup>ct</sup>. I have Surveyed and laid out unto George Long a tract of Forty four acres of Land Situate in N. Liberty County & on a small branch of Broad Creek the waters of Enoree River and hath such Boundings form &c. as the above plat doth Represent

Certified for the 21<sup>st</sup> day of Nov. 1792

Geo Herbert Esq<sup>r</sup>

