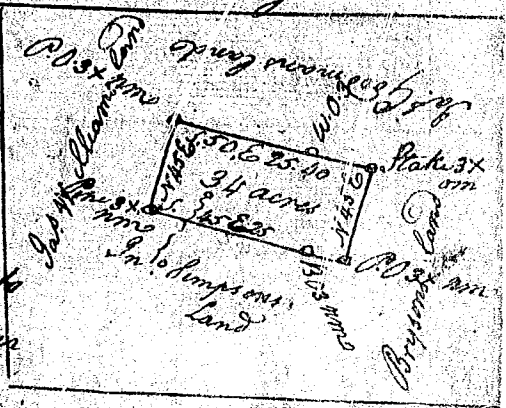


S<sup>c</sup> Carolina } Pursuant to a warrant from John Thomas  
 Laurens County & E<sup>g</sup>l<sup>l</sup> Com<sup>o</sup> of Locations N<sup>o</sup> Saluda River  
 and dated the 20<sup>th</sup> April 1797. — I have admeasured & laid out  
 for Charles Smith three hundred & thirteen acres of land on  
 the Meeting house Branch the Waters of Little River, Bound-  
 ing S. E. W. on John Arnold & Stephen Potter Es, on John Weakly  
 N<sup>o</sup> not Known & hath such Shape form & Marks as the above  
 plat Represents. — Surveyed the 16<sup>th</sup> day of Nov<sup>r</sup> 1792. —  
 John Rodgers Es.

S<sup>c</sup> Carolina  
 Pursuant to a warrant from  
 John Thomas E<sup>g</sup>l<sup>l</sup> Com<sup>o</sup> of Locations  
 N<sup>o</sup> Saluda dated the 28<sup>th</sup> March 1794  
 I have admeasured and laid out unto  
 James Goodman a tract of thirty four  
 acres of Land on the waters of Little  
 River bounding N. E. on Land surveyed for James Goodman  
 S. E. on Brysons Land S. W. on lands of John Simpson N. W. on land  
 on Land held by James Williams and hath such Shape &  
 Marks as the above plat Represents —  
 Surveyed the 31<sup>st</sup> March 1794



William Caldwell  
 Es.