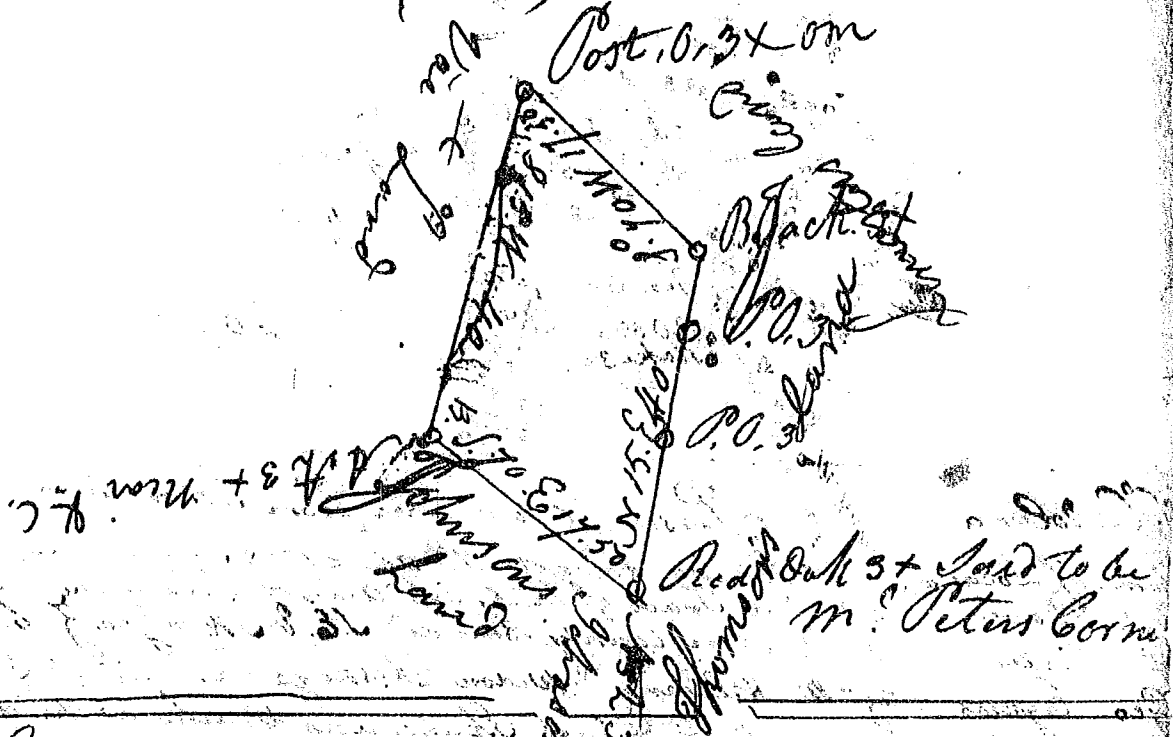
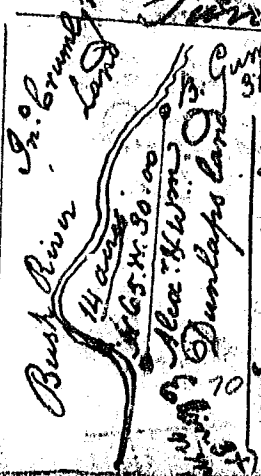


(131)



State of S. Carolina

Pursuant to a warrant from John Thomas Esq. Com. of Locations No. Salubry I have admeasured & laid out unto Jesse Fork a tract of one hundred and eight acres of land part in Union and part in Spartanburg Counties Bounded S. by his own Land formerly Johnsons & by land of Johnsons Thomsons and hath such shape and marks as the above plat represents Surveyed the 3. day of April 1799



Pursuant to a warrant from John Thomas Esq. Com. of Locations date 21. Jan. 1799 I have admeasured & laid out unto Alea. & Wm. Dunlap 14 acres of land on Bush River, Newbury County, Bounded N. W. on S. Dunlaps Land; all other parts by Bush River & In. Crumby's Land & hath shape & marks as represented by the adjoining plat — John Hunter