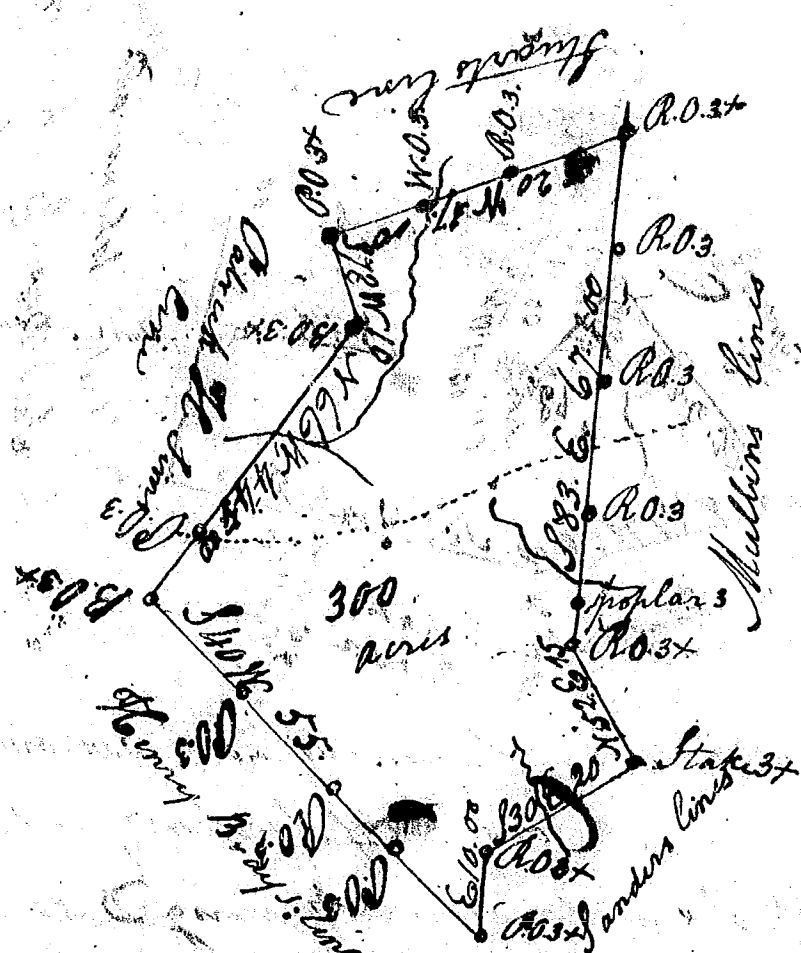


1952



S. Carolina, Pursuant to a warrant from John Horn Esq. Com<sup>r</sup> of Locations N. Saluda dated the 19<sup>th</sup> May 1794. I have ascertained and laid out unto Henry Bray a tract of 300 acres of land in Kneekney District on the Branch of Brushy Fork on the S<sup>o</sup> side of Broad River and hath such form and Marks as the above plat Represents Surveyed the 19<sup>th</sup> May 1794. Charles Sims D<sup>s</sup>

S. Carolina Pursuant to a Warrant from John Thomas Esq. Com<sup>r</sup> of Locations N. Saluda I have ascertained and laid out unto Thomas East Jun<sup>r</sup> a tract of 110 acres of land in Laurens County on the waters of Indian Creek of Enoree River and hath such form marks and Boundaries as the above plat Represents

Surveyed the 12<sup>th</sup> day of March 1793  
Wm Hunter D<sup>s</sup>

