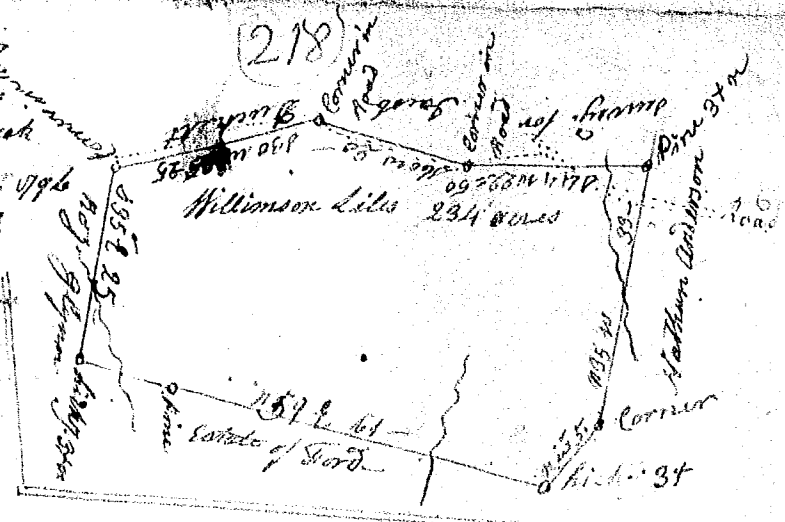
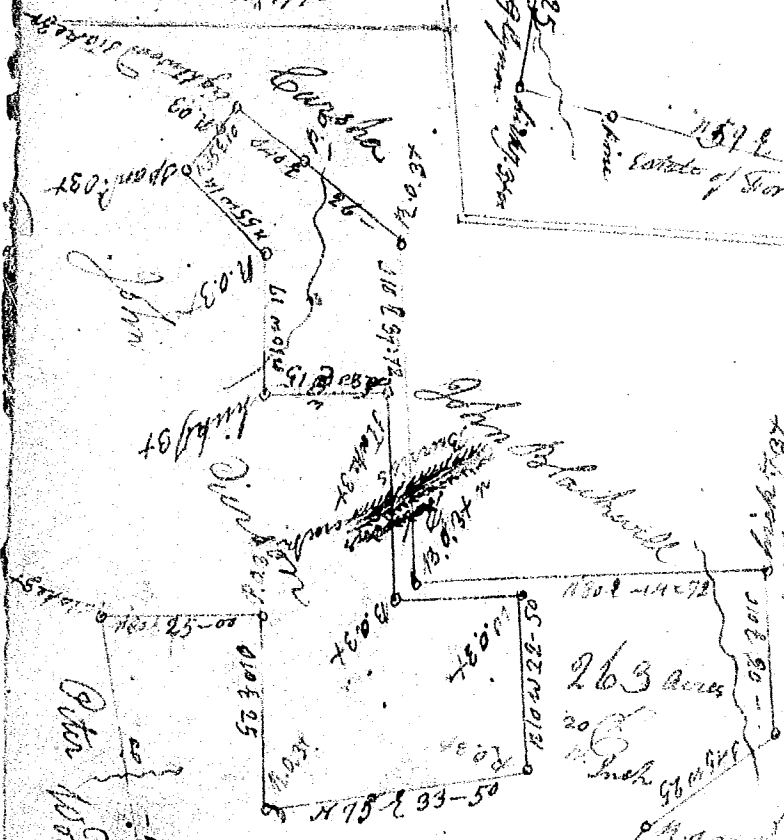


218

This plot of 234 acres
on the branches of Sand
= in creek & Kings creek
was surveyed the 9th Dec 1796
by George Herbert Esq
Recorded 10, 1796



This plot of 263 acres
on ~~Barri's~~ creek
in Laurens county &
bounded as ft. plot
was surveyed for James
Wells on the 24th July
1793
by John Rodgers Esq

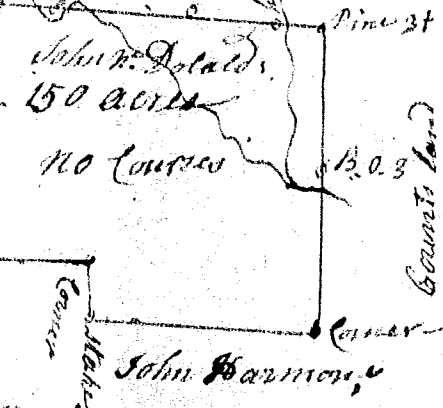


James Wells

Sam. Scott

The annexed plot of 150 acres was
surveyed for John Mc Donald on the Branch of
small branch Buffalo Creek - and - Goldingers
south such shape as this plot represents
surveyed 1st Feb 1794

John Mc Donald



John Harmon